



LEGEND

- AC=AIR CONDITIONING UNIT
- BOC=BACK OF CURB
- DW=CONC DRIVEWAY
- EB=ELECTRIC BOX
- EOP=EDGE OF PAVEMENT
- P=PATIO
- PO=PORCH
- SCO=CLEANOUT
- SW=SIDEWALK
- TP=TELEPHONE PEDESTAL
- WM=WATER METER
- IRON PIPE FOUND
- ◐ IRON PIPE SET
- NAIL SET

THIS SURVEY IS OF AN EXISTING PARCEL OR PARCELS OF LAND AND DOES NOT CREATE A NEW STREET OR CHANGE AN EXISTING STREET.

SHAWN T. RUMBERGER, PLS L-4909 DATE

THIS MAP IS ONLY INTENDED FOR THE PARTIES AND PURPOSES SHOWN. THIS MAP IS NOT FOR RECORDATION. NO TITLE REPORT PROVIDED.

VICINITY MAP (NTS)

IMPERVIOUS AREA

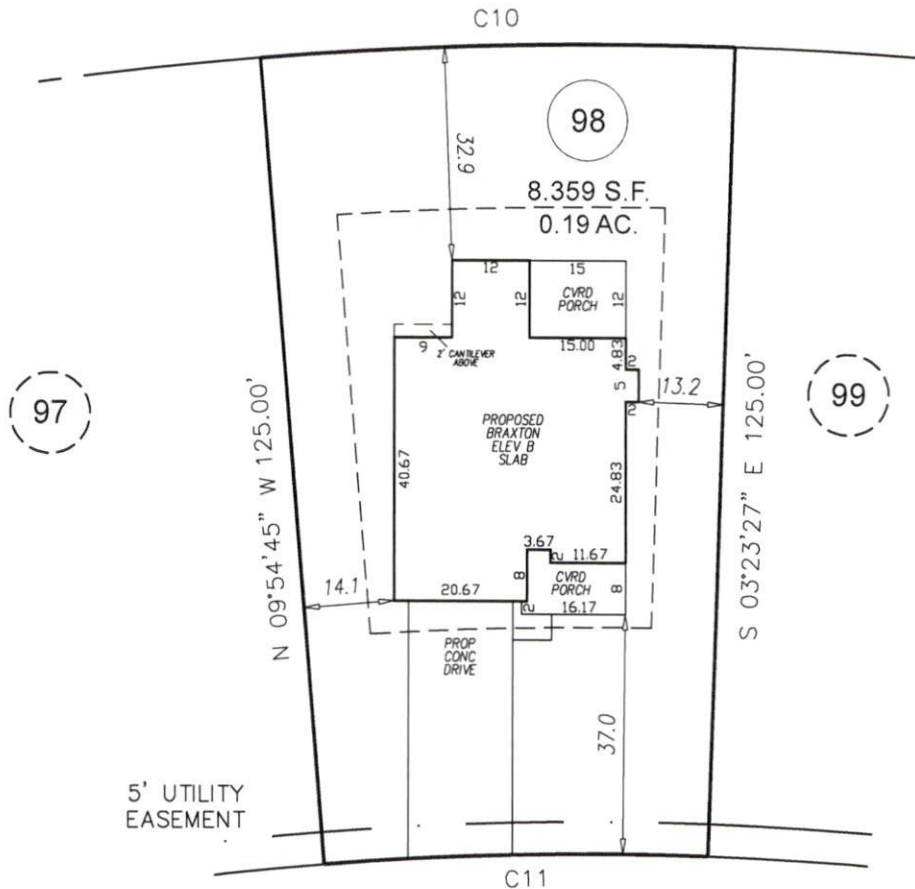
HOUSE	1,830 SQ.FT.
DRIVE	641 SQ.FT.
WALK	27 SQ.FT.
TOTAL	2,498 SQ.FT.

SETBACKS

FRONT	35'
SIDE	10'
REAR	25'
SIDE STREET	20'



N/F
ANDERSON CREEK
PARTNERS, LP
D.B. 1346, PG. 98



FALLS CREEK DRIVE
50' PRIVATE & UTILITY R/W

CURVE	ARC LENGTH	RADIUS	DELTA ANGLE	CHORD BEARING	CHORD LENGTH
C10	74.02'	650.00'	6°31'29"	N 83°20'54" E	73.98'
C11	59.79'	525.00'	6°31'40"	S 83°20'54" W	59.76'

GRAPHIC SCALE



1 inch = 30 ft.

PRELIMINARY
PLOT PLAN

ECLS	PROJECT:	19-002 CAPITOL CITY
	DRAWN BY:	SEER
	SCALE:	1"=30'
	DATE:	09-20-19

FOR
CAPITOL CITY HOMES
FALLS CREEK DR
LOT 98 ANDERSON CREEK CROSSING SUBDIVISION; PHS 8
ANDERSON CREEK TWP., HARNETT CO., NC
P.B. 2019, PG. 311



ECLS
GLOBAL, INC.
U.S. VETERAN-OWNED
19 N MCKINLEY ST
COATS, NC 27521
910.897.3257 ECLSGLOBALINC.COM
910.897.2329 (FAX) CO#C-4175