



LEGEND

- AC=AIR CONDITIONING UNIT
- BOC=BACK OF CURB
- DW=CONC DRIVEWAY
- EB=ELECTRIC BOX
- EOP=EDGE OF PAVEMENT
- P=PATIO
- PO=PORCH
- SCO=CLEANOUT
- SW=SIDEWALK
- TP=TELEPHONE PEDESTAL
- WM=WATER METER
- IRON PIPE FOUND
- ◐ IRON PIPE SET
- NAIL SET

THIS SURVEY IS OF AN EXISTING PARCEL OR PARCELS OF LAND AND DOES NOT CREATE A NEW STREET OR CHANGE AN EXISTING STREET.

SHAWN T. RUMBERGER, PLS L-4909 DATE

THIS MAP IS ONLY INTENDED FOR THE PARTIES AND PURPOSES SHOWN. THIS MAP IS NOT FOR RECORDATION. NO TITLE REPORT PROVIDED.

VICINITY MAP (NTS)

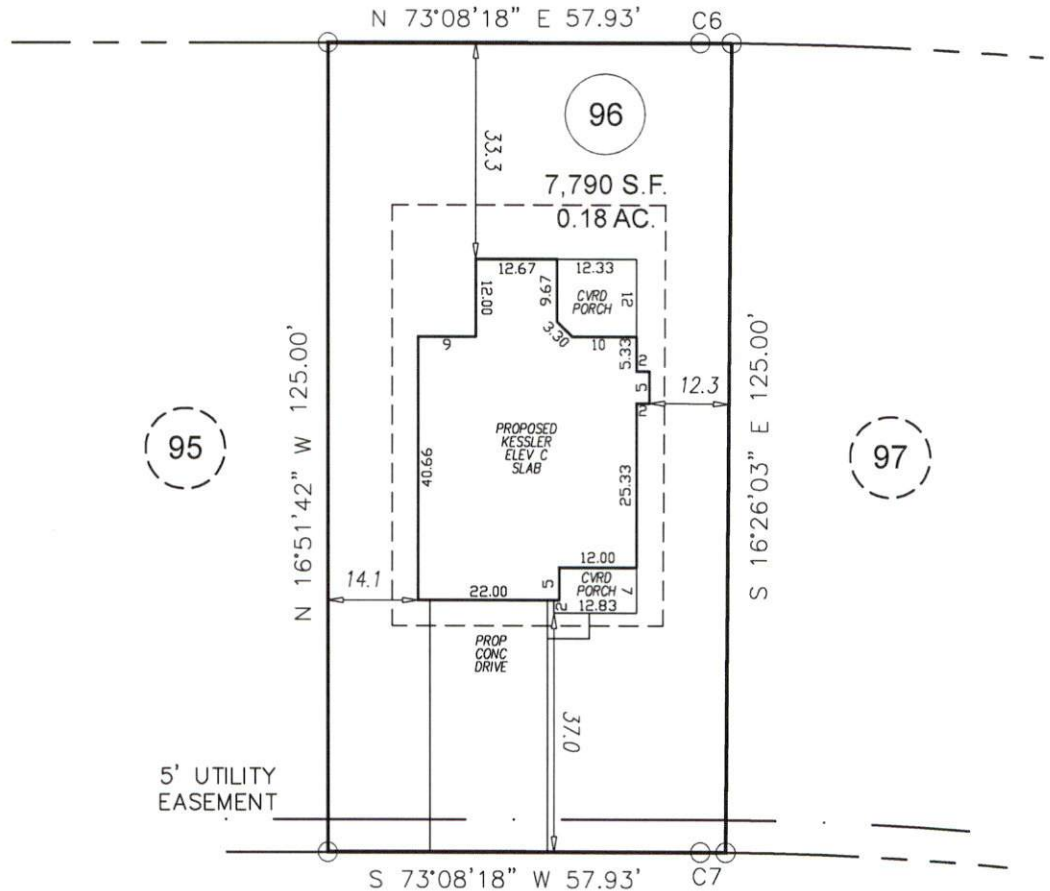
IMPERVIOUS AREA

HOUSE 1,718 SQ.FT.
 DRIVE 715 SQ.FT.
 WALK 28 SQ.FT.
 TOTAL 2,461 SQ.FT.

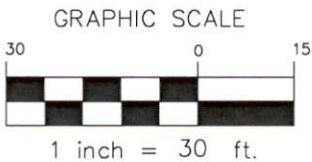
SETBACKS

FRONT 35'
 SIDE 10'
 REAR 25'
 SIDE STREET 20'

N/F
 ANDERSON CREEK
 PARTNERS, LP
 D.B. 1346, PG. 98



FALLS CREEK DRIVE
 50' PRIVATE & UTILITY R/W



CURVE	ARC LENGTH	RADIUS	DELTA ANGLE	CHORD BEARING	CHORD LENGTH
C6	4.85'	650.00'	0°25'39"	N 73°21'08" E	4.85'
C7	3.92'	525.00'	0°25'40"	S 73°21'08" W	3.92'

**PRELIMINARY
 PLOT PLAN**

ECLS	PROJECT:	19-002 CAPITOL CITY
	DRAWN BY:	SEER
	SCALE:	1"=30'
	DATE:	09-20-19

FOR
CAPITOL CITY HOMES
 FALLS CREEK DR
 LOT 96 ANDERSON CREEK CROSSING SUBDIVISION; PHS 8
 ANDERSON CREEK TWP., HARNETT CO., NC
 P.B. 2019, PG. 311

ECLS GLOBAL, INC.
 U.S. VETERAN-OWNED
 19 N MCKINLEY ST
 COATS, NC 27521
 910.897.3257 ECLSGLOBALINC.COM
 910.897.2329 (FAX) CO#C-4175