

**LEGEND**

- AC=AIR CONDITIONING UNIT
- BOC=BACK OF CURB
- DW=CONC DRIVEWAY
- EB=ELECTRIC BOX
- EOP=EDGE OF PAVEMENT
- P=PATIO
- PO=PORCH
- SCO=CLEANOUT
- SW=SIDEWALK
- TP=TELEPHONE PEDESTAL
- WM=WATER METER
- IRON PIPE FOUND
- IRON PIPE SET
- NAIL SET

THIS SURVEY IS OF AN EXISTING PARCEL OR PARCELS OF LAND AND DOES NOT CREATE A NEW STREET OR CHANGE AN EXISTING STREET.

SHAWN T. RUMBERGER, PLS L-4909 DATE

THIS MAP IS ONLY INTENDED FOR THE PARTIES AND PURPOSES SHOWN. THIS MAP IS NOT FOR RECORDATION. NO TITLE REPORT PROVIDED. NOTE: CURVE INFORMATION SHOWN HEREON IS APPROXIMATE DUE TO INSUFFICIENT CURVE TABLE DATA ON RECORDED PLAT.

**VICINITY MAP (NTS)**

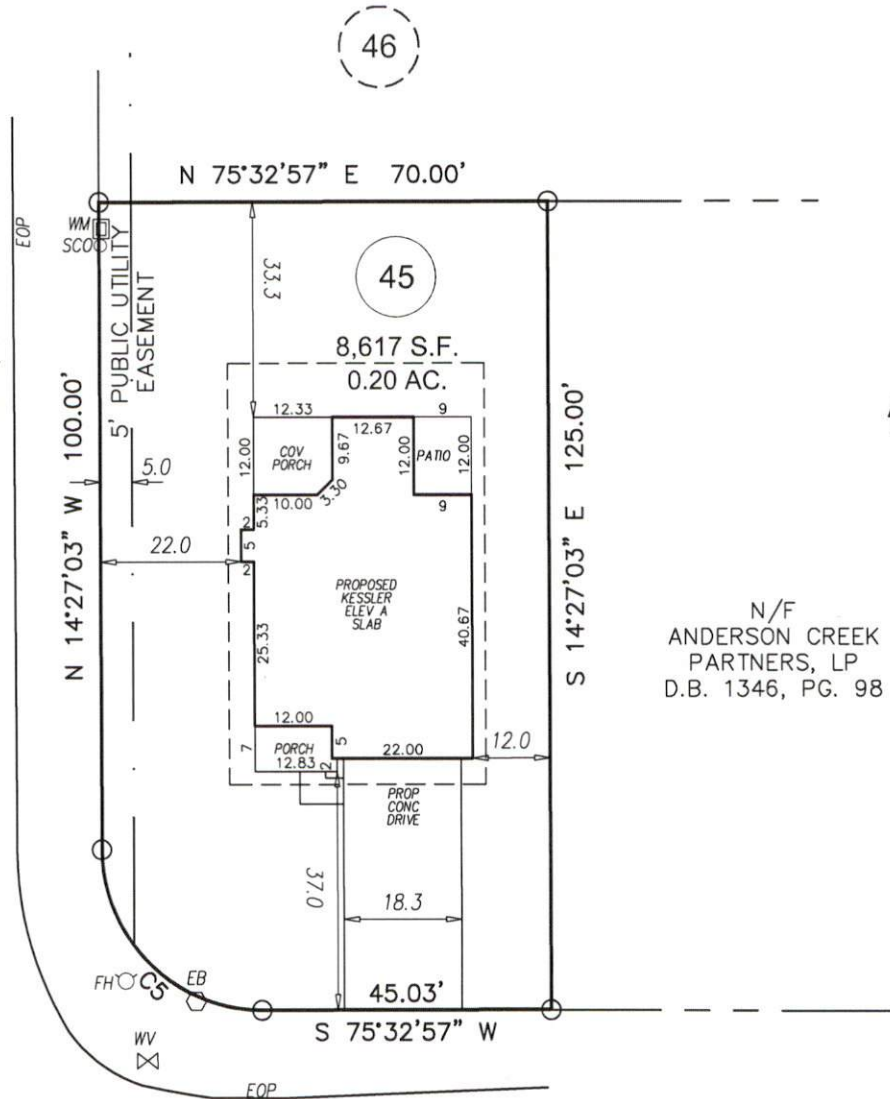
**IMPERVIOUS AREA**

HOUSE	1,719 SQ.FT.
DRIVE	715 SQ.FT.
WALK	32 SQ.FT.
PATIO	108 SQ.FT.
<b>TOTAL</b>	<b>2,574 SQ.FT.</b>

**SETBACKS**

FRONT	35'
SIDE	10'
REAR	25'
SIDE STREET	20'

46



N/F  
ANDERSON CREEK  
PARTNERS, LP  
D.B. 1346, PG. 98

REVISION: ADDED UTILITIES PER REQUEST 09-06-19 CKR

**GRAPHIC SCALE**



1 inch = 30 ft.

**PRELIMINARY PLOT PLAN**

CURVE	RADIUS	ARC LENGTH	CHORD LENGTH	CHORD BEARING
C5	25.00'	39.24'	35.33'	N 59°24'59" W

<b>STCS</b>	PROJECT:	19-002 CAPITOL CITY
	DRAWN BY:	CKR
	SCALE:	1"=30'
	DATE:	08-27-19

FOR  
**CAPITOL CITY HOMES**  
TIMBER SKIP DR  
LOT 45 ANDERSON CREEK CROSSING SUBDIVISION; PHS 8  
ANDERSON CREEK TWP., HARNETT CO., NC  
P.B. 2019, PG. 211



**ECLS**  
GLOBAL, INC.  
U.S. VETERAN-OWNED  
19 N MCKINLEY ST  
COATS, NC 27521  
910.897.3257 ECLSGLOBALINC.COM  
910.897.2329 (FAX) CO#C-4175