

- LEGEND**
- AC=AIR CONDITIONING UNIT
 - BOC=BACK OF CURB
 - DW=CONC DRIVEWAY
 - EB=ELECTRIC BOX
 - EOP=EDGE OF PAVEMENT
 - P=PATIO
 - PO=PORCH
 - SCO=CLEANOUT
 - SW=SIDEWALK
 - TP=TELEPHONE PEDESTAL
 - WM=WATER METER
 - IRON PIPE FOUND
 - IRON PIPE SET
 - NAIL SET

THIS SURVEY IS OF AN EXISTING PARCEL OR PARCELS OF LAND AND DOES NOT CREATE A NEW STREET OR CHANGE AN EXISTING STREET.

SHAWN T. RUMBERGER, PLS L-4909 DATE

THIS MAP IS ONLY INTENDED FOR THE PARTIES AND PURPOSES SHOWN. THIS MAP IS NOT FOR RECORDATION. NO TITLE REPORT PROVIDED. NOTE: CURVE INFORMATION SHOWN HEREON IS APPROXIMATE DUE TO INSUFFICIENT CURVE TABLE DATA ON RECORDED PLAT.

VICINITY MAP (NTS)

IMPERVIOUS AREA

HOUSE	1,830 SQ.FT.
DRIVE	633 SQ.FT.
WALK	32 SQ.FT.
PATIO	108 SQ.FT.
TOTAL	2,603 SQ.FT.
SETBACKS	
FRONT	35'
SIDE	10'
REAR	25'
SIDE STREET	20'

N/F
INGRAM, WORTH & SHERRY
D.B. 1254, PG. 629



N 13°30'05" W 96.90'

13

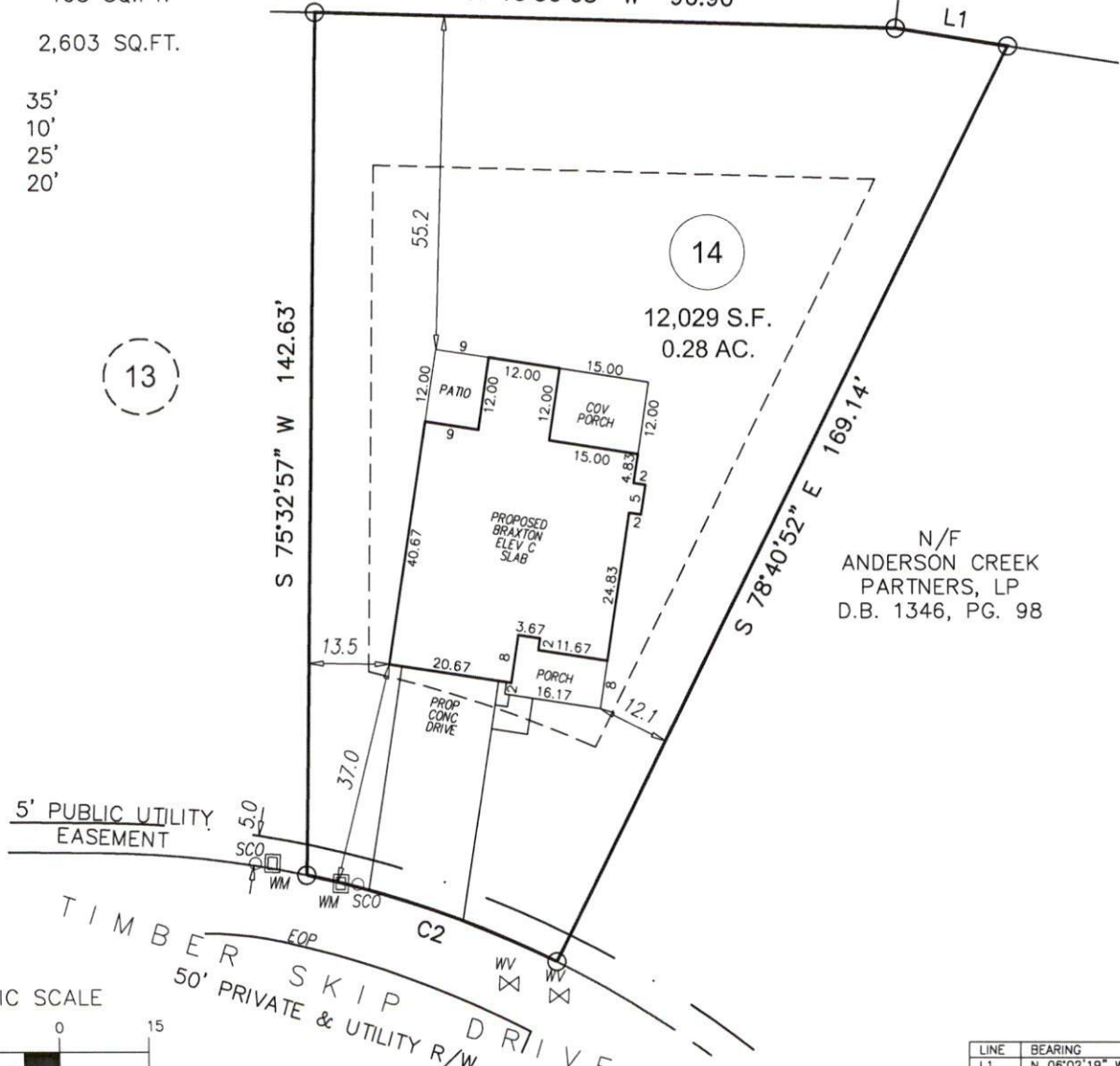
14

12,029 S.F.
0.28 AC.

S 75°32'57" W 142.63'

S 78°40'52" E 169.14'

N/F
ANDERSON CREEK PARTNERS, LP
D.B. 1346, PG. 98



5' PUBLIC UTILITY EASEMENT

TIMBER SKIP DRIVE
50' PRIVATE & UTILITY R/W



1 inch = 30 ft.

PRELIMINARY PLOT PLAN

LINE	BEARING	DISTANCE
L1	N 06°02'19" W	18.83'

CURVE	RADIUS	ARC LENGTH	CHORD LENGTH	CHORD BEARING
C2	175.00'	44.39'	44.27'	S 04°03'10" W

REVISION: ADDED UTILITIES AND CHANGED TO FRONT LOAD PER REQUEST 09-06-19 CKR

ECLS	PROJECT:	19-002 CAPITOL CITY
	DRAWN BY:	CKR
	SCALE:	1"=30'
	DATE:	08-27-19

FOR
CAPITOL CITY HOMES
165 TIMBER SKIP DR
LOT 14 ANDERSON CREEK CROSSING SUBDIVISION; PHS
ANDERSON CREEK TWP., HARNETT CO., NC
P.B. 2019, PG. 211

ECLS GLOBAL, INC.
U.S. VETERAN-OWNED
19 N MCKINLEY ST
COATS, NC 27521
910.897.3257 ECLSGLOBALINC.COM
910.897.2329 (FAX) CO#C-4175