

Norris Farm

Lot #20

4-Bedroom Home (480 gal./day)

<u>LINE #</u>	<u>COLOR</u>	<u>BS</u>	<u>HI</u>	<u>FS</u>	<u>ELEVATION</u>	<u>LINE LENGTH</u>	<u>Design Length</u>
TBM		2.0		100.0		<u>in field</u>	<u>installation</u>
INST. 1			102.0				
1	Yellow			4.7	97.3	70	60
2	Blue			5.2	96.8	70	60
3	Orange			5.7	96.3	70	60
4	Red			6.1	95.9	70	60
5	White			6.6	95.4	65	60
6	Pink			6.9	95.1	65	60
7	Yellow			7.3	94.7	65	60
8	Blue			7.5	94.5	65	60
9	Orange			7.9	94.1	65	60
10	Red			8.3	93.7	65	60

System

Repair

Lines 1-5

Lines 6-10

System Type

Accepted Status System

Accepted Status System

Suggested Soil LTAR

0.40

0.40

Total Line Length

300

300

Square Footage

900

900

Proposed Trench Bottom

24"

20"

Distribution Method

Gravity to D-Box

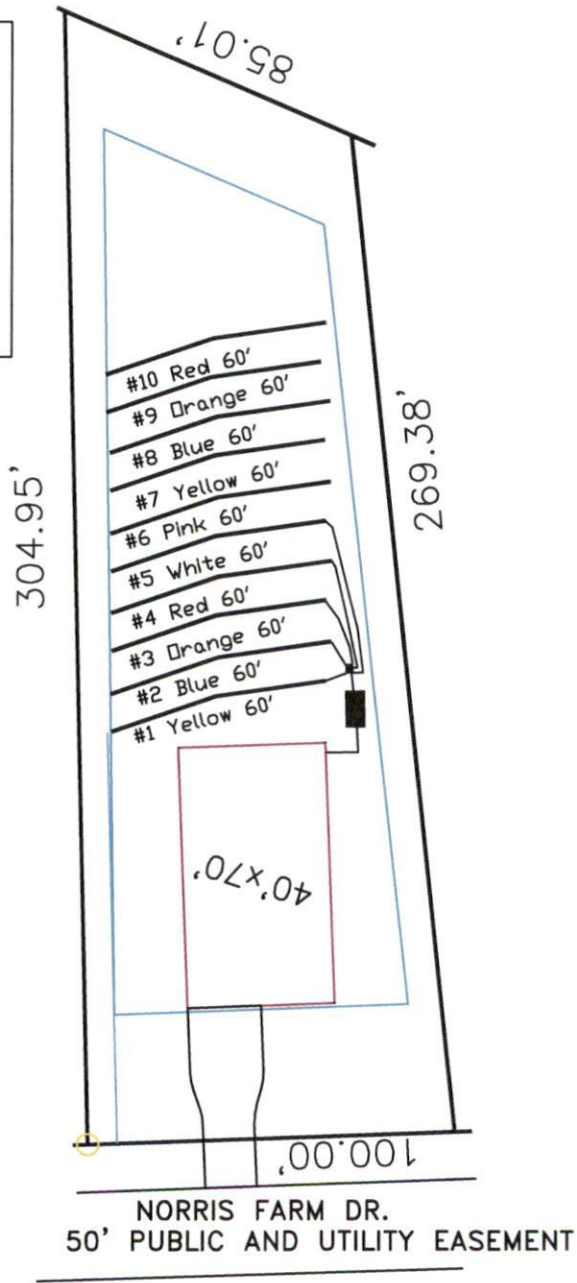
Gravity to D-Box

Norris Farm 4-Bedroom Septic Proposal Lot #20

System: Gravity to D-Box
 Lines: 1-5 (300')
 0.4 LTAR
 24" Trench Bottom
 Accepted Status System
 Repair: Pressure Manifold
 Lines: 6-10 (300')
 0.4 LTAR
 24" Trench Bottom
 Accepted Status System

20

0.580 AC.
25246 SF



GRAPHIC SCALE
1" = 50'



Adams
Soil Consulting
919-414-6761
Job #574