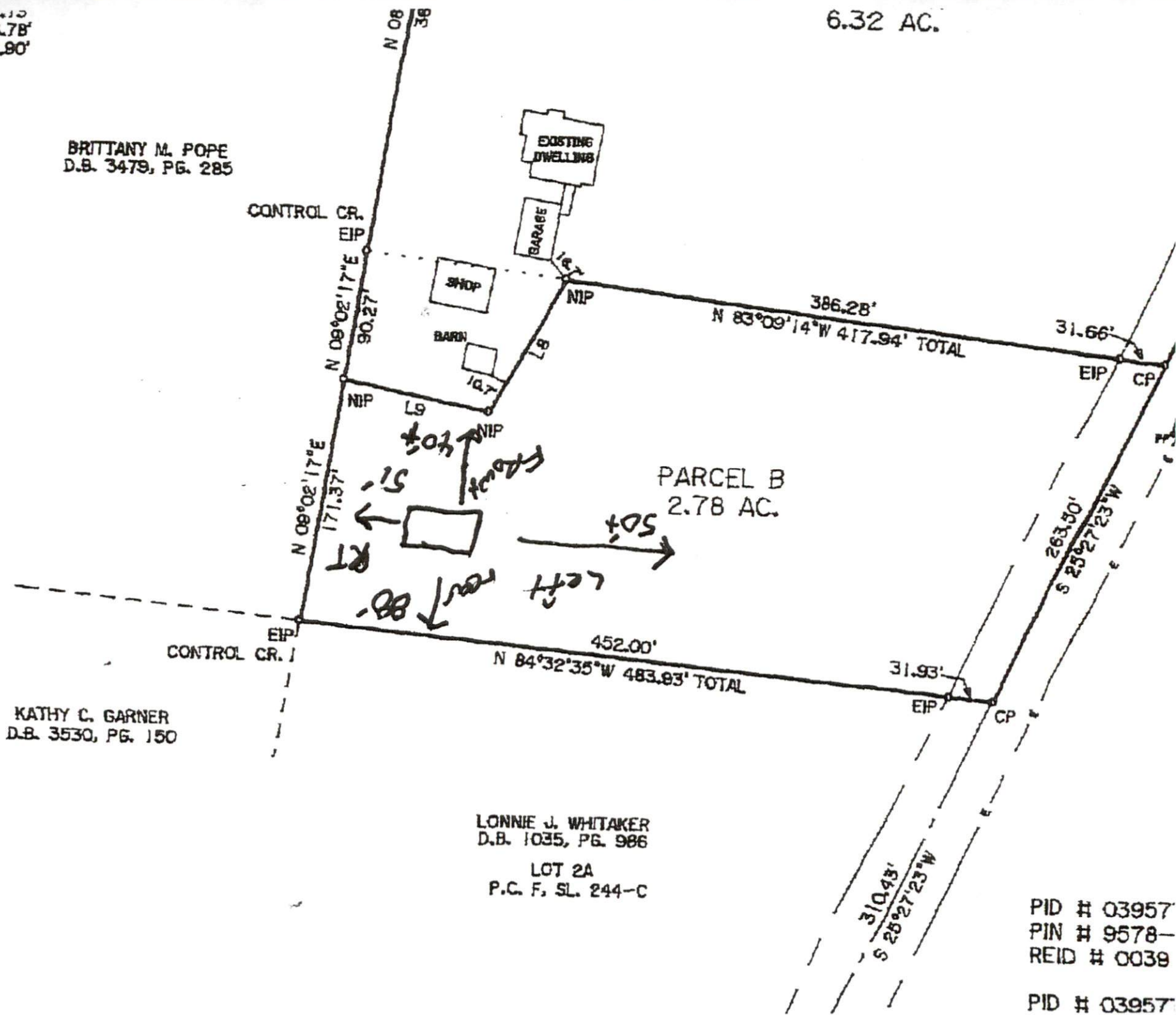


19'37"W
26'07"W

106.78'
102.80'

6.32 AC.

BRITTANY M. POPE
D.B. 3479, PG. 285



CONTROL CR. |

KATHY C. GARNER
D.B. 3530, PG. 150

LONNIE J. WHITAKER
D.B. 1035, PG. 986

LOT 2A
P.C. F. SL. 244-C

PID # 03957
PIN # 9578-
REID # 0039

PID # 03957

CKS