

REVISION TABLE	NUMBER	DATE	REVISION BY	DESCRIPTION
	01	11/15/19		

FOUNDATION
(REVISED 11/15/2019)

PLAN 2L-2873
design PJK

DRAWINGS PROVIDED BY:
SOUTH SCAN, INC.
Willow Spring, NC 27592
COPYRIGHT, rights reserved

DATE:

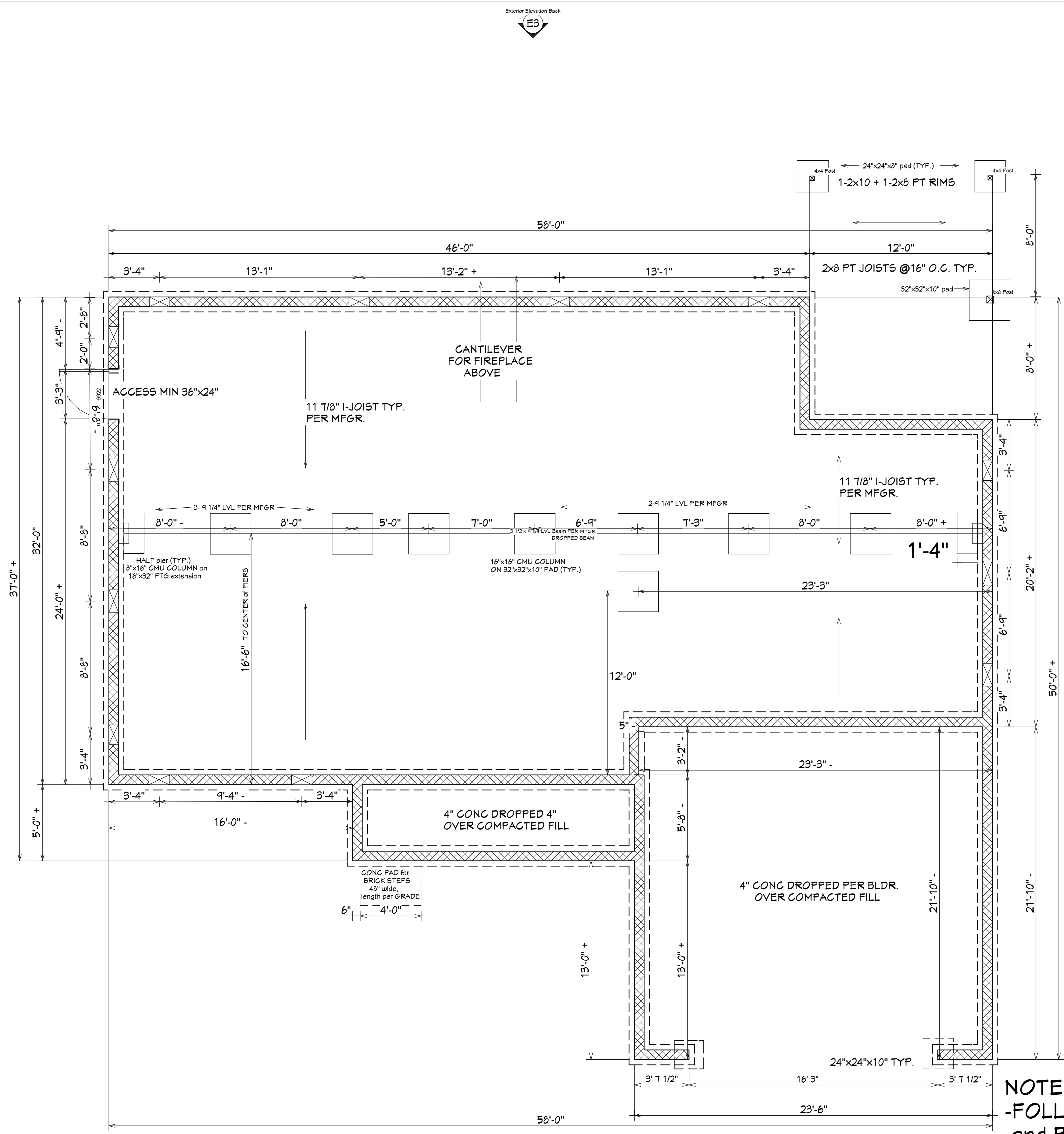
11/15/2019

SCALE:

1/4"=1'

SHEET:

P-1



ENERGY EFFICIENCY NOTES:
 -WINDOW MINIMUM FENESTRATION:
 U: 0.35
 Solar Heat Gain (SHGC): 0.30
 -INSULATION MINIMUM EFFICIENCY:
 FLOORS: R-19
 WALLS: R-15
 CEILINGS: R-38

NOTES: SSI PLAN 2L-2873
 -FOLLOW Manufacturers LAYOUT for BEAM, JOIST, and BLOCKING placement and instructions
 -Perimeter footings 16"x8" 3000 PSI Concrete
 -8" MASONRY foundation WALLS
 -Min access 24"x36" locate per BUILDER
 -9 1/4" BEAMS DROPPED, 11 7/8 BEAMS FLUSH per MFGR, GARAGE WALLS SAME LEVEL, PORCH ELEVATED FOR +15" F.F. El. (-4")=+11"
 -Piers: TYP. 32"x32"x10" w/ 16"x16" CMU column
 -Anchor bolts: 1/2"x10" spaced 6' O.C. and 12" from CORNERS.
 -Vent Calcs: 16855F CRAWLSPACE/1500=1.1235F TOTAL
 REQ. W 6 mil POLY, locate (1) within 3' of each CORNER

