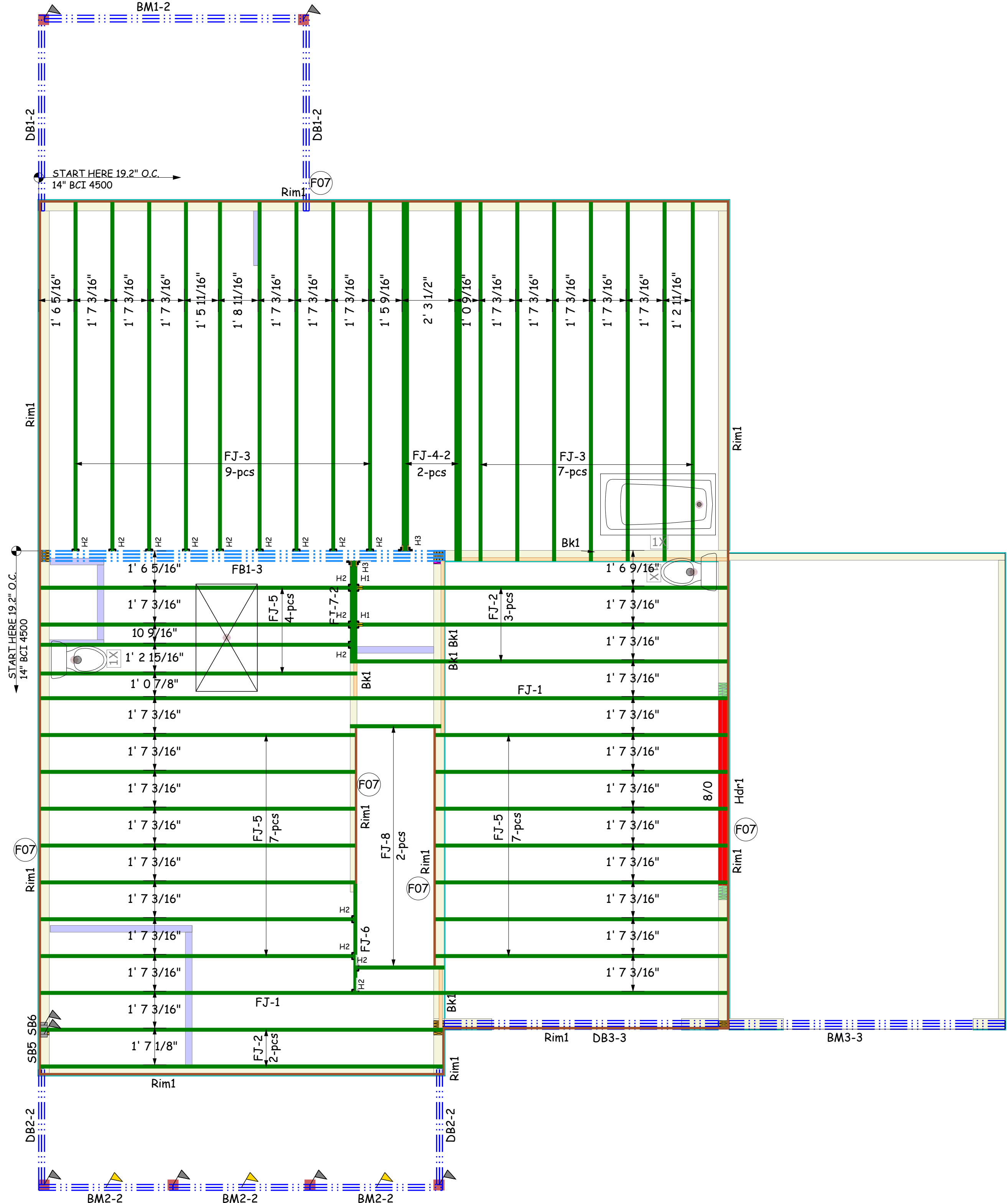


This layout and associated materials list has been prepared based on project plans and/or information provided to Builders FirstSource (BFS). It remains the responsibility of the builder, architect, designer, or other responsible persons to review this information to assure that it is appropriate, accurate, complete and complies with applicable building codes.

- GENERAL NOTES:**
- 1.) READ THE INSTALLATION GUIDE BEFORE FRAMING.
 - 2.) ALL WALLS SHOWN ARE LOAD BEARING UNLESS NOTED OTHERWISE. WALLS NOT SHOWN ARE CONSIDERED NON-LOAD BEARING.
 - 3.) UNLESS STATED OTHERWISE ALL CEILING & ROOF LOADS BRACE DIRECTLY TO LOAD BEARING WALLS SUPPORTED BY FOUNDATION.
 - 4.) CONTACT BUILDERS FIRSTSOURCE BEFORE MAKING ANY ALTERATIONS OR ADJUSTMENTS...FAILURE TO DO SO MAY RESULT IN COSTLY REPAIRS.

FB1-3
 INSTALL 2 ROWS
 OF 1/4" X 4.5"
 STRUCTURAL SCREWS
 AT 12" O.C.



Products				
PlotID	Length	Product	Plies	Net Qty
FJ-1	30' 0"	14" BCI® 4500s-1.8	1	2
FJ-2	18' 0"	14" BCI® 4500s-1.8	1	5
FJ-3	16' 0"	14" BCI® 4500s-1.8	1	16
FJ-4-2	16' 0"	14" BCI® 4500s-1.8	2	4
FJ-5	14' 0"	14" BCI® 4500s-1.8	1	18
FJ-6	6' 0"	14" BCI® 4500s-1.8	1	1
FJ-7-2	6' 0"	14" BCI® 4500s-1.8	2	2
FJ-8	4' 0"	14" BCI® 4500s-1.8	1	2
BM1-2	12' 0"	1-3/4" x 9-1/4" VERSA-LAM® 2.0 3100 SP	2	2
FB1-3	18' 0"	1-3/4" x 14" VERSA-LAM® 2.0 3100 SP	3	3
DB1-2	10' 0"	2x10 SP No.2	2	4
BM2-2	6' 0"	2x10 SP No.2	2	6
DB2-2	6' 0"	2x10 SP No.2	2	4
BM3-3	12' 0"	2x12 SP No.2	3	3
DB3-3	12' 0"	2x12 SP No.2	3	3
Rim1	12' 0"	1" x 14" BC RIM BOARD OSB	1	13
Bk1	22' 0"	14" BCI® 4500s-1.8	1	1

Hangers			
PlotID	Qty	Manuf	Product
H1	2	Simpson	HU 14
H2	16	Simpson	IUS 1.81/14
H3	2	Simpson	MIU 3.56/14
Structural Screws*	50	Simpson	SDS 1/4" X 4.5"*

Wall Framing				
PlotID	Length	Product	Plies	Net Qty
Hdr1	10' 0"	3-1/2" x 9-1/4" VERSA-LAM® 1.7 2650 SP	1	1

A&G
 NHZ014 HAMPTON B R
 SECOND FLOOR EWP PLACEMENT PLAN
 Builders FirstSource, Central Carolina Markets
 DRAWN BY: CORY D DRIETZ DATE: 11/25/19
 SCALE: NOT TO SCALE JOB NUMBER:

MINIMUM DESIGN DATA
 LIVE LOAD 40 PSF
 DEAD LOAD 10 PSF
 TOTAL LOAD 50 PSF
 DOL = 100%
 DEFLECTION CRITERIA
 L/480 (MINIMUM)
 ARCHITECTURAL PLAN DATE
 XX-XX-XX
 REVISED ARCH. PLAN DATE
 XX-XX-XX
 XXXXXXXX
 Sheet
 1 of 1