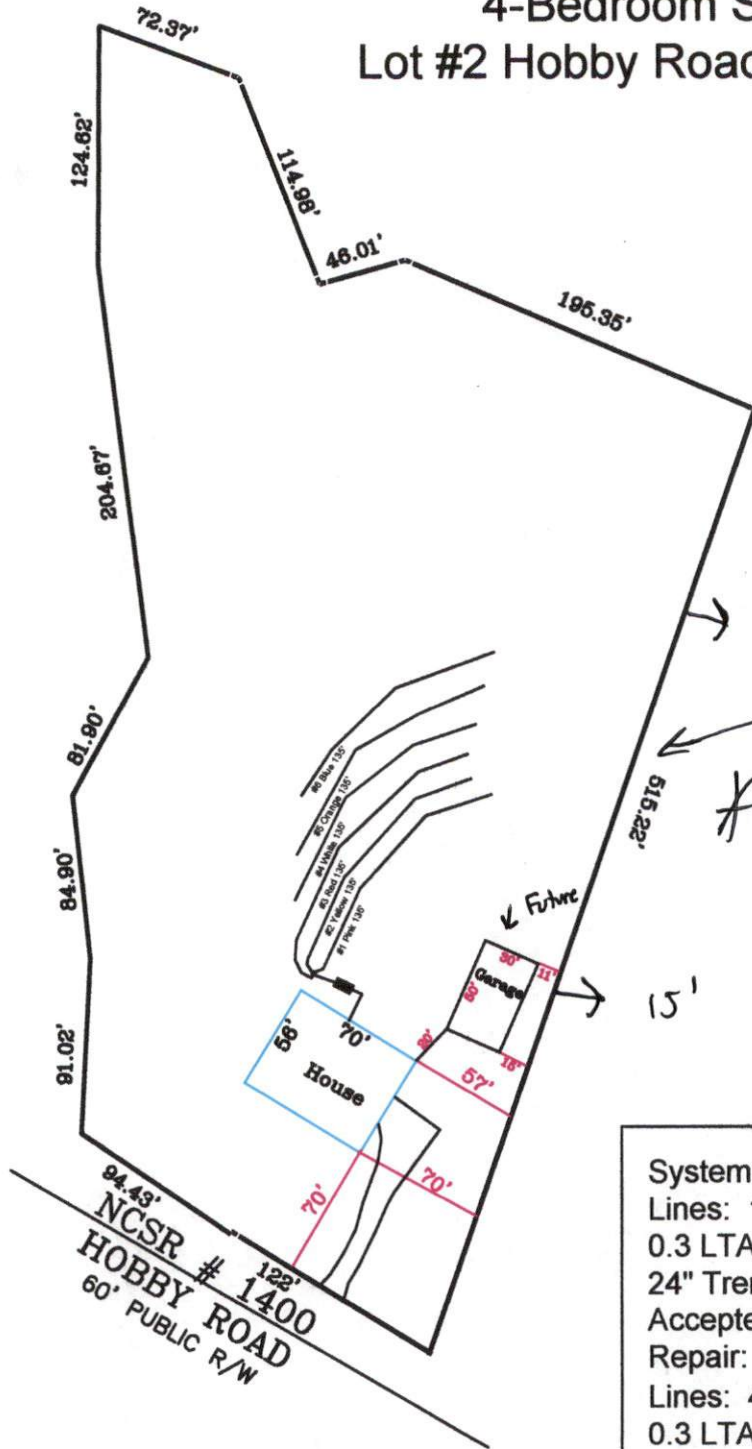


Stephenson Builders
 4-Bedroom Septic Proposal
 Lot #2 Hobby Road - ~3.28 acres

2

3.28 ACRES



*This line moved
 * over 15' after
 Alex did this*

System: Gravity D-Box
 Lines: 1-3 (405')
 0.3 LTAR
 24" Trench Bottom
 Accepted Status System
 Repair: Gravity to D-Box
 Lines: 4-6 (405')
 0.3 LTAR
 18" Trench Bottom
 Accepted Status System

Adams
 Soil Consulting
 919-414-6761
 Job #653

GRAPHIC SCALE
 1" = 100'



Stephenson Builders

Lot #2 Hobby Road

4-Bedroom Home (480 gal./day)

<u>LINE #</u>	<u>COLOR</u>	<u>BS</u>	<u>HI</u>	<u>FS</u>	<u>ELEVATION</u>	<u>LINE LENGTH</u>	<u>Design Length</u>
TBM		4.7		100.0		<u>in field</u>	<u>installation</u>
INST. 1			104.7				
1	Pink			4.2	100.5	140	135
2	Yellow			4.7	100	140	135
3	Red			5.6	99.1	140	135
4	White			6.3	98.4	150	135
5	Orange			7.5	97.2	160	135
6	Blue			8.5	96.2	170	135
Total						900	810

System Type	<u>System</u>	<u>Repair</u>
	Lines 1-3	Lines 4-6
	Accepted Status System	Accepted Status System
	EZ-FLOW	EZ-FLOW
Suggested Soil LTAR	0.30	0.30
Total Line Length	405	405
Square Footage	1215	1215
Proposed Trench Bottom	24"	18"
Distribution Method	*Gravity to D-Box	Gravity to D-Box