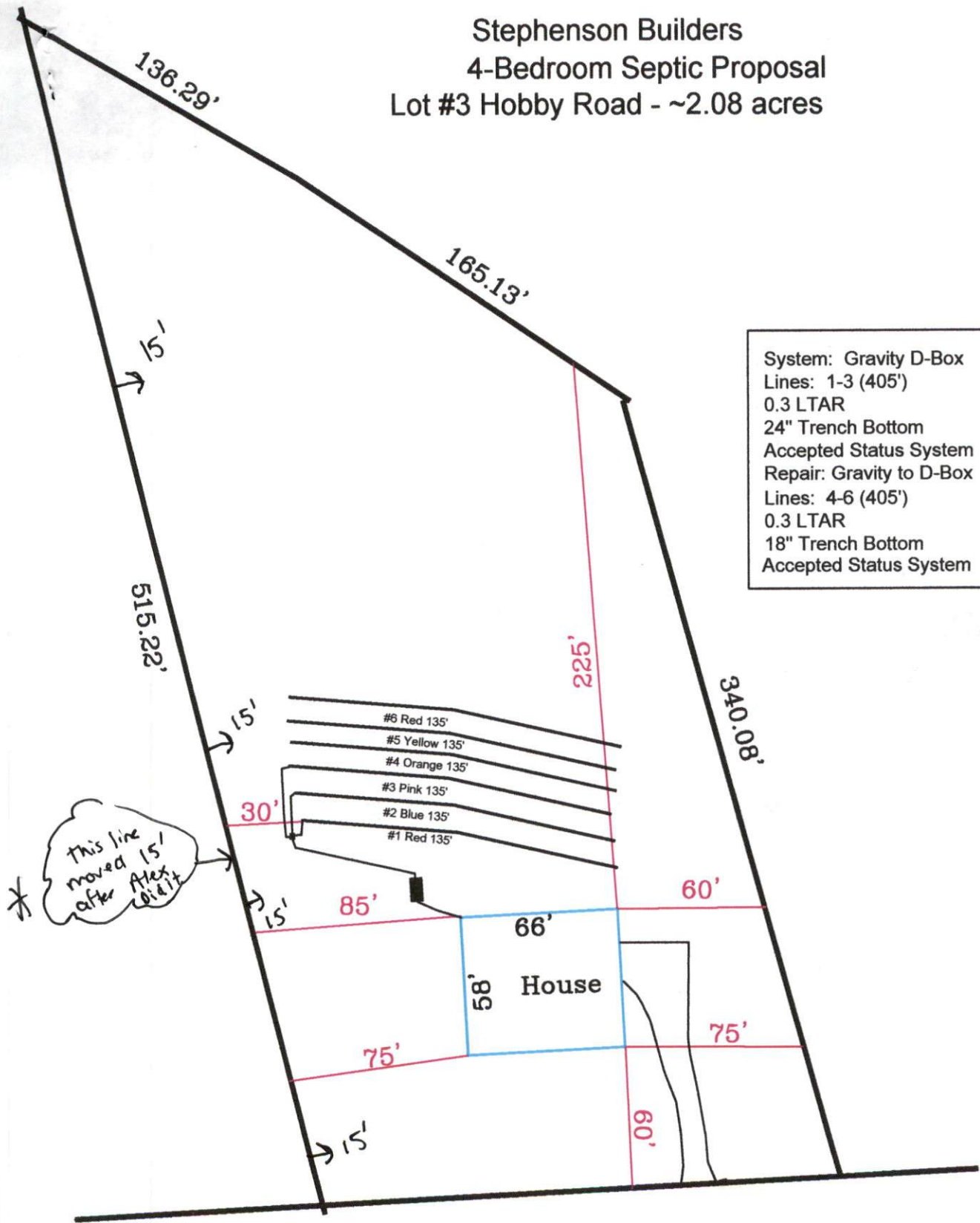


Stephenson Builders
 4-Bedroom Septic Proposal
 Lot #3 Hobby Road - ~2.08 acres

System: Gravity D-Box
 Lines: 1-3 (405')
 0.3 LTAR
 24" Trench Bottom
 Accepted Status System
 Repair: Gravity to D-Box
 Lines: 4-6 (405')
 0.3 LTAR
 18" Trench Bottom
 Accepted Status System



NCSR # 1400
 HOBBY ROAD
 60' PUBLIC R/W

Adams
 Soil Consulting
 919-414-6761
 Job #653

GRAPHIC SCALE
 1" = 60'



Stephenson Builders

Lot #3 Hobby Road

4-Bedroom Home (480 gal./day)

<u>LINE #</u>	<u>COLOR</u>	<u>BS</u>	<u>HI</u>	<u>FS</u>	<u>ELEVATION</u>	<u>LINE LENGTH</u>	<u>Design Length</u>
TBM		4.7		100.0		<u>in field</u>	<u>installation</u>
INST. 1			104.7				
1	Red			5.8	98.9	150	135
2	Blue			6.8	97.9	150	135
3	Pink			7.8	96.9	150	135
4	Orange			8.8	95.9	150	135
5	Yellow			9.8	94.9	150	135
6	Red			10.8	93.9	150	135
Total						900	810

System Type	<u>System</u> Lines 1-3 Accepted Status System EZ-FLOW	<u>Repair</u> Lines 4-6 Accepted Status System EZ-FLOW
Suggested Soil LTAR	0.30	0.30
Total Line Length	405	405
Square Footage	1215	1215
Proposed Trench Bottom	24"	18"
Distribution Method	*Gravity to D-Box	Gravity to D-Box