

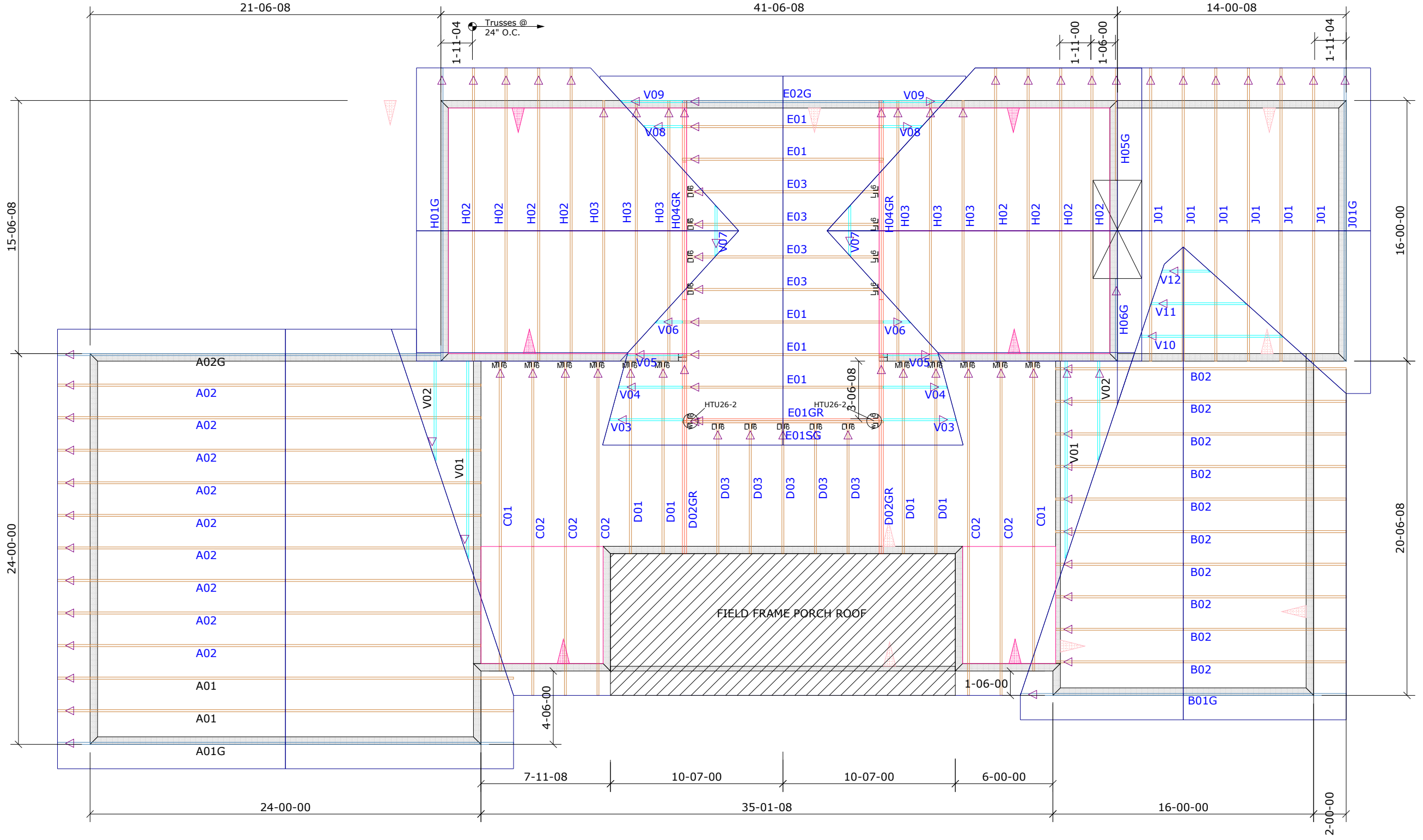
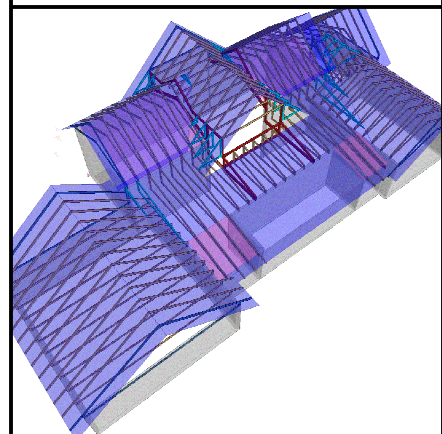
**General Notes:**  
 - Per ANSI/TPI 1-2002 all "Truss to Wall" connections are the responsibility of the Building Designer, not the Truss Manufacturer.  
 - Dimensions are Feet-Inches-Sixteenths.  
 - Trusses are to be 24" o.c. unless noted otherwise (U.N.O.)  
 - Trusses are not designed to support brick U.N.O.  
 - Do not cut or modify trusses without first contacting Builders FirstSource.  
 - Immediately contact Builders FirstSource if trusses are damaged.

**Connection Notes:**  
 - All hangers are to be Simpson or equivalent U.N.O.  
 - Use Manufacturer's specifications for all hanger connections U.N.O.  
 - Use 10d x 1 1/2" Nails in hanger connections to single ply roof girder trusses.

**Floor notes:**  
 - Shift truss as required to avoid plumbing traps.  
 - Installation Contractor and/or Field Supervisor are to verify all dimensions, trap locations, and options prior to installation

**Dimension Notes:**  
 - Drawing not to scale. Do not scale dimensions

△◁▷ LEFT END OF TRUSS AS SHOWN ON TRUSS DETAIL DRAWINGS ARE INDICATED BY TRIANGLE ICONS.



<b>HANGER LIST</b>		ALL TIE DOWNS H2.5A UNLESS NOTED
		<b>SPECIAL ITEMS LIST</b>
		<b>MISC MATERIAL</b>
---		ELEV: ---
---		NC LOT: ---
		<b>APPWRIGHT #</b>
		---
<ul style="list-style-type: none"> <li>[OPTION 1]</li> <li>[OPTION 2]</li> <li>[OPTION 3]</li> </ul>		<b>CODE:</b> IRC 2015
		<b>LOADING:</b>
		T.C.L.L. 20 PSF
<b>DESIGNED BY:</b> ---		T.C.D.L. 10 PSF
<b>LAYOUT:</b> ---		B.C.L.L. 0 PSF
<b>L/O DATE:</b> 10/14/2019		B.C.D.L. 10 PSF
		<b>WIND:</b>
<b>REV1:</b> XX/XX/XX		M.P.H. 115 MPH
<b>REV2:</b> XX/XX/XX		EXPOSURE CATEGORY
<b>REV3:</b> XX/XX/XX		B (WOODED AREAS/OTHERS)
<b>PICK TICKET:</b> ---	<b>JOB NO:</b> ---	
<b>SALES NO:</b> ---	<b>ACCT NO:</b> ---	
<b>HATCH LEGEND</b>		
	ATTIC ROOM	
	VOLUME CEILING	
	STICK FRAMING	