

**VICINITY MAP**  
Not To Scale



| IMPERVIOUS SURFACE AREA  |               |
|--------------------------|---------------|
| DESCRIPTION              | AREA (S.F.)   |
| LOT AREA TO B/C          | 27,941        |
| HOUSE                    | 1,577         |
| DRIVE TO R/W             | 787           |
| DRIVE APRON              | 298           |
| PATIO                    | 100           |
| LEAD WALK                | 40            |
| PUBLIC WALK              | 0             |
| <b>TOTAL PROPOSED</b>    | <b>2,802</b>  |
| <b>% IMPERVIOUS AREA</b> | <b>=10.0%</b> |
| SOD/SEEDING              |               |
| TYPE                     | S.F.          |
| SOD                      | 0             |
| SEED & STRAW             | 25,139        |

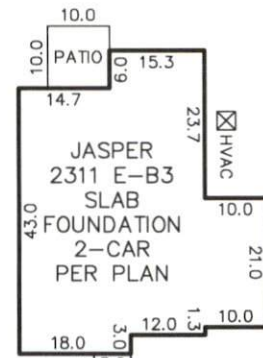
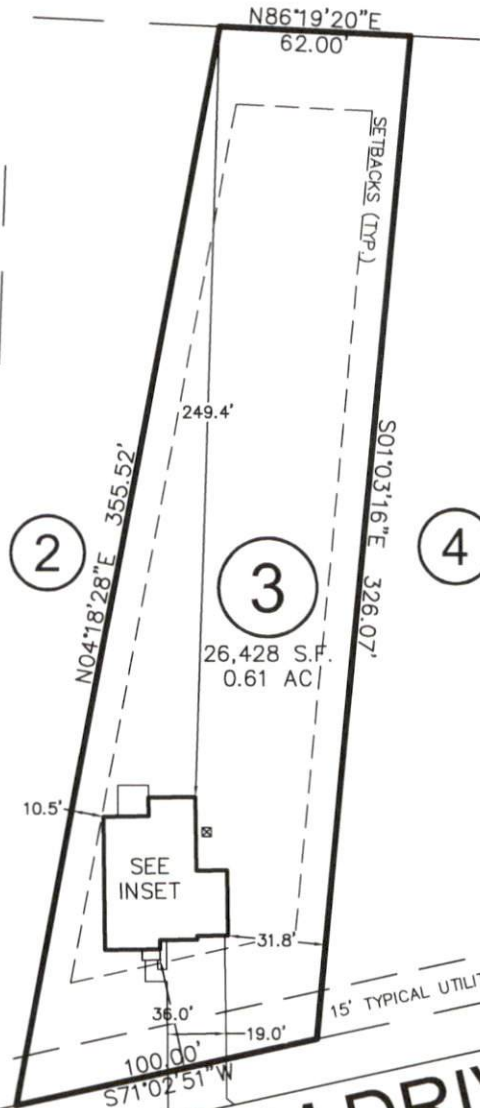
SETBACKS: (PB 2019 PG 291)

- FRONT - 35'
- SIDE - 10'
- REAR - 25'
- CORNER - 20'



N/F  
ALLEN MASON  
D.B. 2386, PG. 265

N/F  
PENNY MATTHEWS REYNOLDS  
D.B. 1002, PG. 53



**INSET**  
N.T.S.

**NORRIS FARM DRIVE**  
50' PUBLIC R/W &  
UTILITY EASEMENT

THIS DRAWING DOES NOT  
REFLECT AS-BUILT INFORMATION