

Course	Bearing	Distance
L1	N 51°23'22" W	69.13'
L2	N 47°10'09" W	34.34'
L3	S 61°34'57" E	41.19'

THOMAS R. GALLOWAY
 RYE A. GALLOWAY
 D.B.2237, PG.205
 M.B.2017, PG.009

THOMAS S. LASATER
 NANCY J. LASATER
 D.B.1134, PG.822

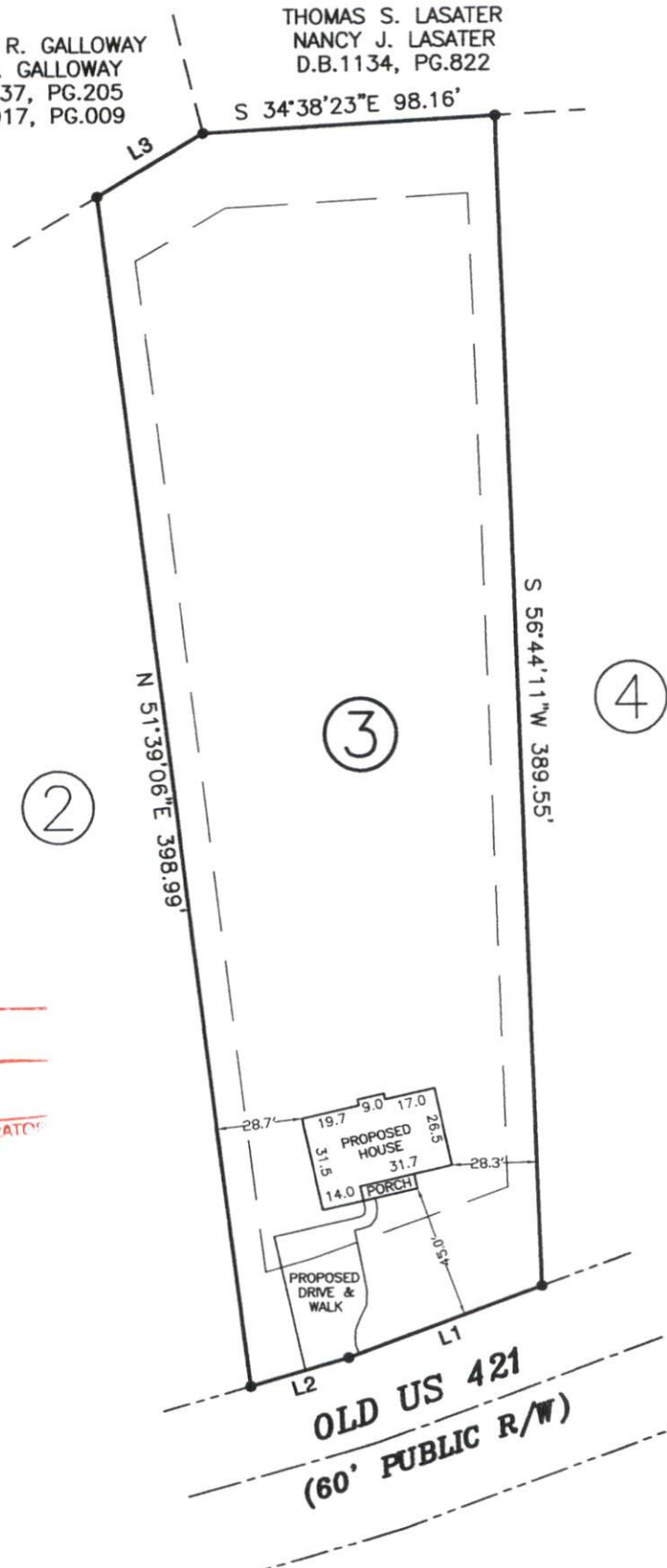
S 34°38'23"E 98.16'



VICINITY MAP (NTS)

LEGEND

- NTS NOT TO SCALE
- EIP EXISTING IRON PIPE
- PP POWER POLE
- W/M WATER METER
- TB TELEPHONE BOX
- IPS IRON PIPE SET
- CP&L TRANSFORMER
- CATV CABLE TV BOX
- L POLE LIGHT POLE
- OHPL OVERHEAD POWER LINE
- F.E.S. FLARED END SECTION (PIPE)
- RCP REINFORCED CONC. PIPE
- B.O.C. BACK OF CURB
- F.H. FIRE HYDRANT
- C/O SEWER CLEAN OUT
- EIS EXISTING IRON STAKE
- M.H. MANHOLE
- ECM EXISTING CONCRETE MONUMENT
- P.K. PARKER KALON NAIL



SITE PLAN APPROVAL

DISTRICT RA 30 USE SFD

#BEDROOMS _____

10-15-19

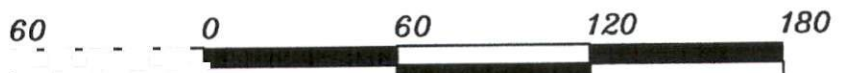
K.A.G.

ADMINISTRATOR

(REF: PLAT NORTH
 M.B.2001, PG.179)

NOTE: SHOWN IS LOT 3 OF
 THOMAS S. & NANCY J. LASATER S/D
 REF: M.B.2001, PG.179

AREA = 1.087 ACRES
 1500 OLD US 421



GRAPHIC SCALE - FEET

PRELIMINARY PLOT PLAN FOR: