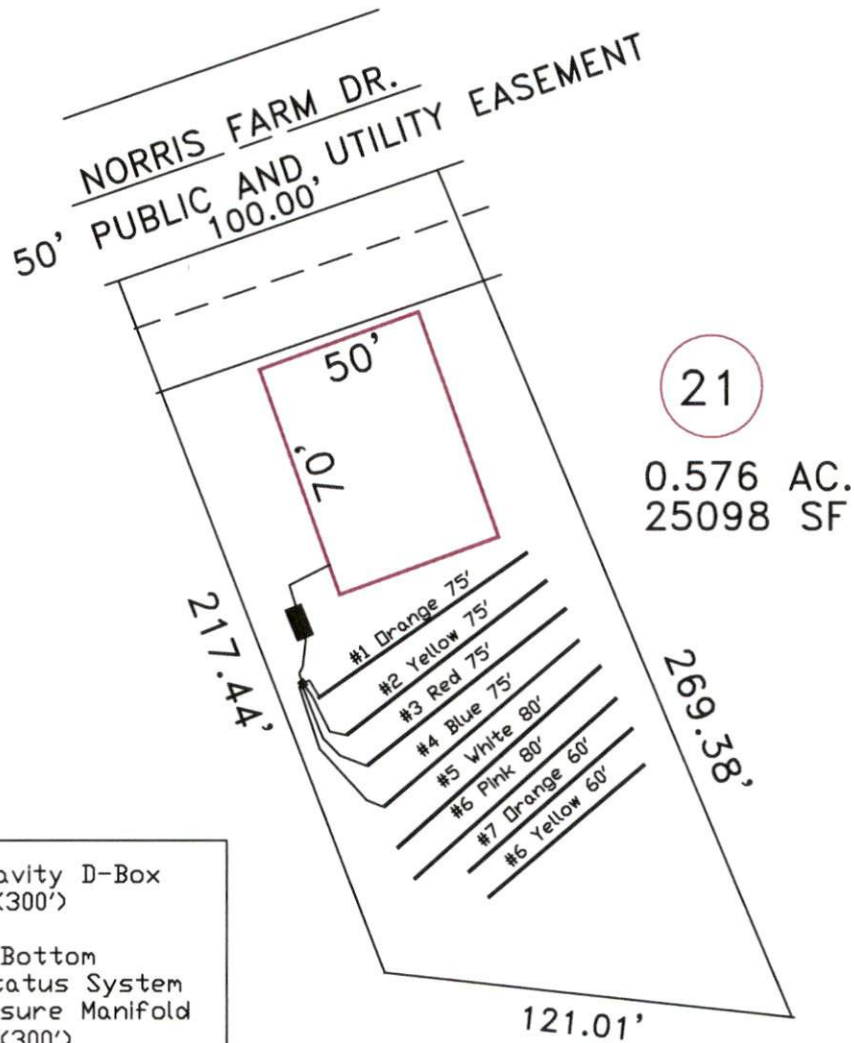


Norris Farm 4-Bedroom Septic Proposal Lot #21



System: Gravity D-Box
 Lines: 1-4 (300')
 0.4 LTAR
 24" Trench Bottom
 Accepted Status System
 Repair: Pressure Manifold
 Lines: 5-8 (300')
 0.4 LTAR
 18" Trench Bottom
 Accepted Status System

GRAPHIC SCALE
 1" = 50'



Adams
 Soil Consulting
 919-414-6761
 Job #574

Norris Farm

Lot #21

4-Bedroom Home (480 gal./day)

<u>LINE #</u>	<u>COLOR</u>	<u>BS</u>	<u>HI</u>	<u>FS</u>	<u>ELEVATION</u>	<u>LINE LENGTH</u>	<u>Design Length</u>
TBM		2.0		100.0		<u>in field</u>	<u>installation</u>
INST. 1			102.0				
1	Orange			3.6	98.4	88	75
2	Yellow			4	98	90	75
3	Red			4.4	97.6	92	75
4	Blue			5.1	96.9	95	75
5	White			5.5	96.5	90	90
6	Pink			6.1	95.9	90	90
7	Orange			6.5	95.5	70	60
8	Yellow			6.8	95.2	60	60

System

Lines 1-4

Repair

Lines 5-8

System Type

Accepted Status System

Accepted Status System

Suggested Soil LTAR

0.40

0.40

Total Line Length

300

300

Square Footage

900

900

Proposed Trench Bottom

18-24"

18-24"

Distribution Method

Gravity to D-Box

Pressure Manifold