



ECS Southeast, LLP

6151 Raeford Road
Suite A
Fayetteville, NC 28304
(910) 401-3288 [Phone]
(910) 323-0539 [Fax]

LETTER OF TRANSMITTAL

December 23, 2019

Groce Companies
1504 S Horner Blvd
Sanford, NC 27330

ATTN: Mr. Van Groce

RE: **Foundation Evaluation Weaver Lane**

ECS Job # **33:5082**

Permits:

Location: **263 Weaver Lane
Sanford, NC**

We are enclosing: Field Reports For your use As requested

ENCL:

Field Report # 1 12/20/2019

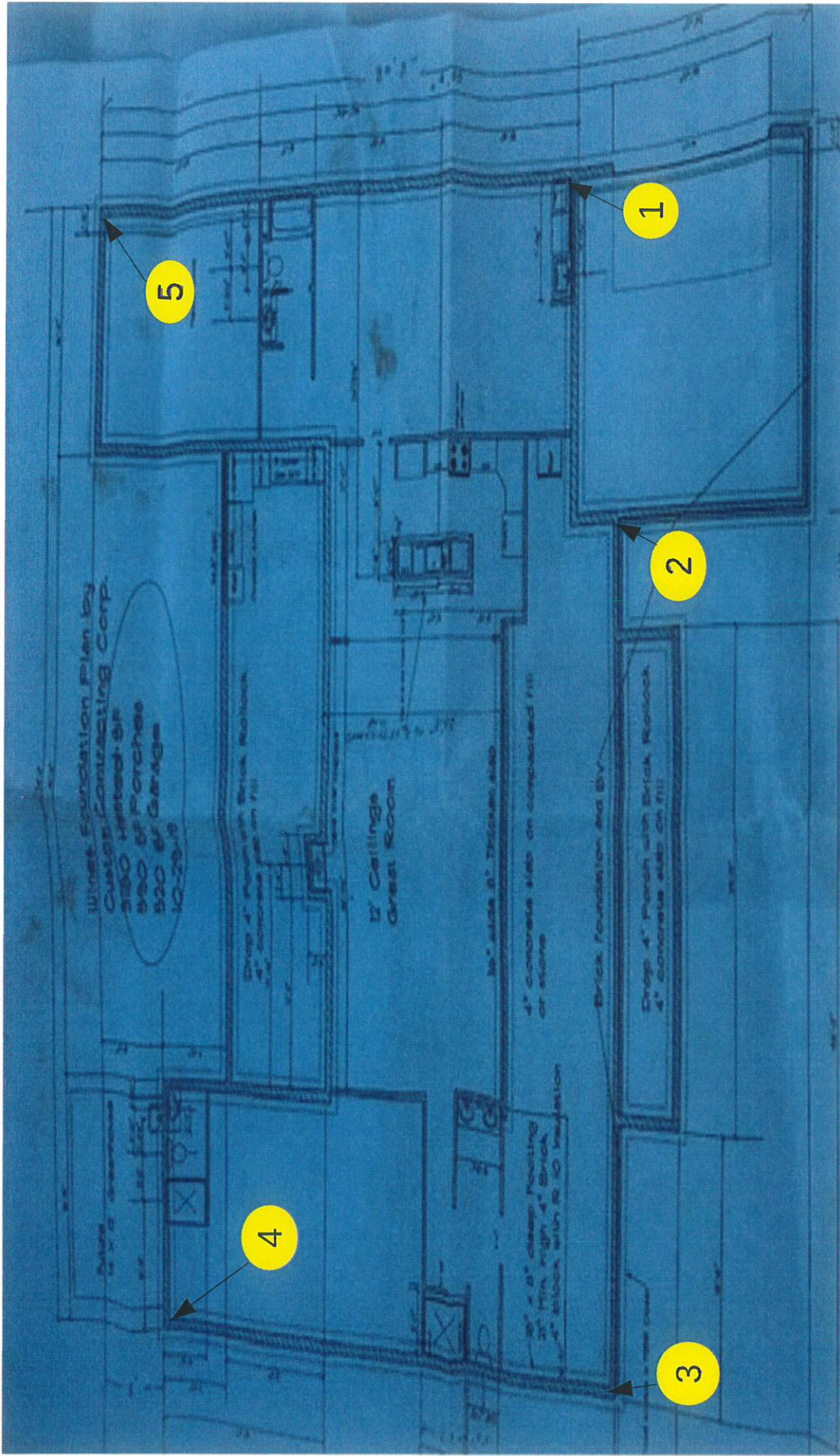




Dennis D. Lowery, P.E.
Project Engineer

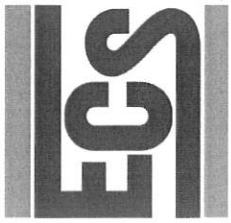
Donny Johnson
Field Services Manager

Disclaimer

1. This report (and any attachments) shall not be reproduced except in full without prior written approval of ECS.
2. The information in this report relates only to the activities performed on the report date.
3. Where appropriate, this report includes statements as to compliance with applicable project drawings and specifications for the activities performed on this report date.
4. Incomplete or non-conforming work will be recorded for future resolution.
5. The results of samples and/or specimens obtained or prepared for subsequent laboratory testing will be presented in separate reports/documents.



<p>Thomas Wilmot Dec 20th, 2019 263 Weaver Lane, Sanford Proj: 5082 WO#: 54278</p>	<p>Key (NTS) DCP's test locations</p> <p>#</p>		<p>NORTH</p> 
--	--	---	--



Report of Spread Footing - Foundation Observations

Project: Foundation Evaluation Weaver Lane

Project No. 5082

Location: 263 Weaver Lane

Day/Date: 12/20/2019

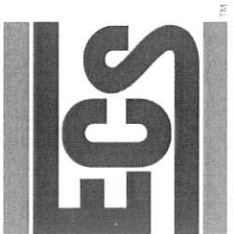
Sanford - Harnett County - NC - 27332

Contractor: Groce Companies

Footing Number	Location	Size (W x H x L)		Footing Bottom Elevation		Description of Subgrade Material	Required Blow Counts		Design Bearing Pressure
		Design	Actual	Design	Depth of Undercut (in)		# of Blows / increment		
1	North east corner	x x	x x	N/A	0	Orange clayey Sand	6	3,3,4	2000
1	North east corner	x x	x x	N/A	-1	Orange clayey Sand	6	6,6,7	2000
1	North east corner	x x	x x	N/A	-2	Orange clayey Sand	6	6,5,6	2000
1	North east corner	x x	x x	N/A	-3	Orange clayey Sand	6	6,5,6	2000
2	Center Between garage and house	x x	x x	N/A	0	Brown clayey Sand	6	2,3,3	2000
2	Center Between garage and house	x x	x x	N/A	-1	Brown clayey Sand	6	4,5,5	2000
2	Center Between garage and house	x x	x x	N/A	-2	Brown clayey Sand	6	4,5,5	2000
2	Center Between garage and house	x x	x x	N/A	-3	Brown clayey Sand	6	3,5,5	2000
3	South east corner	x x	x x	N/A	0	Orange clayey Sand	6	3,4,4	2000

By: Thomas Allen Wilmot

ECS Southeast, LLP



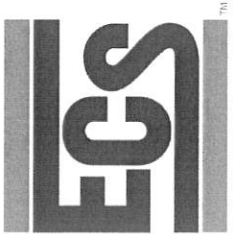
Report of Spread Footing - Foundation Observations

Project: Foundation Evaluation Weaver Lane Project No. 5082
 Location: 263 Weaver Lane Day/Date: 12/20/2019
Sanford - Harnett County - NC - 27332
 Contractor: Groce Companies

Footing Number	Location	Size (W x H x L)		Footing Bottom Elevation		Description of Subgrade Material	Required Blow Counts		Design Bearing Pressure
		Design	Actual	Design	Depth of Undercut (in)		# of Blows / increment		
3	South east corner	x x	x x	N/A	-1	Orange clayey Sand	6	5,5,5	2000
3	South east corner	x x	x x	N/A	-2	Orange clayey Sand	6	4,5,5	2000
3	South east corner	x x	x x	N/A	-3	Orange clayey Sand	6	5,4,4	2000
4	South West corner	x x	x x	N/A	0	Brown clayey Sand	6	5,6,6	2000
4	South West corner	x x	x x	N/A	-1	Brown clayey Sand	6	6,7,7	2000
4	South West corner	x x	x x	N/A	-2	Reddish Brown sandy Clay	6	7,9,8	2000
4	South West corner	x x	x x	N/A	-3	Reddish Brown sandy Clay	6	9,11,11	2000
5	North West corner	x x	x x	N/A	0	Brown clayey Sand	6	3,4,4	2000
5	North West corner	x x	x x	N/A	-1	Brown clayey Sand	6	5,5,6	2000

By: Thomas Allen Wilmot

ECS Southeast, LLP



Report of Spread Footing - Foundation Observations

Project: Foundation Evaluation Weaver Lane Project No. 5082
 Location: 263 Weaver Lane Day/Date: 12/20/2019
Sanford - Harnett County - NC - 27332
 Contractor: Groce Companies

Footing Number	Location	Size (W x H x L)		Footing Bottom Elevation		Description of Subgrade Material	Required Blow Counts		Design Bearing Pressure
		Design	Actual	Design	Depth of Undercut (in)		# of Blows / increment		
5	North West corner	x x	x x	N/A	-2 .	Brown clayey Sand	6		2000
5	North West corner	x x	x x	N/A	-3 .	Brown clayey Sand	4,5,6	6	2000

By: Thomas Allen Wilmot
ECS Southeast, LLP