

VICINITY MAP  
Not To Scale



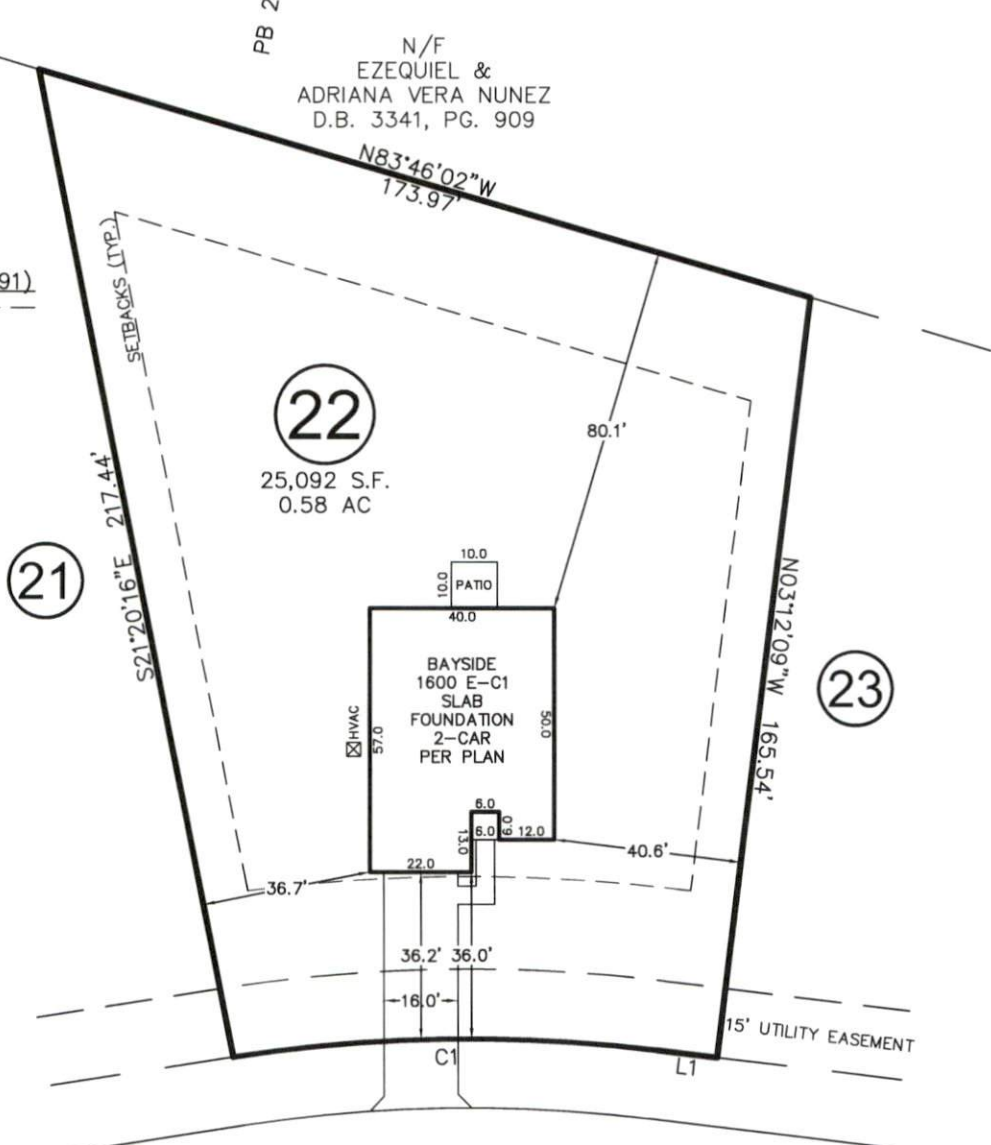
| IMPERVIOUS SURFACE AREA |             |
|-------------------------|-------------|
| DESCRIPTION             | AREA (S.F.) |
| LOT AREA TO B/C         | 26,635      |
| HOUSE                   | 2,154       |
| DRIVE TO R/W            | 580         |
| DRIVE APRON             | 250         |
| PATIO                   | 100         |
| LEAD WALK               | 72          |
| PUBLIC WALK             | 0           |
| TOTAL PROPOSED          | 3,156       |
| % IMPERVIOUS AREA       | =11.8%      |
| SOD/SEEDING             |             |
| TYPE                    | S.F.        |
| SOD                     | 0           |
| SEED & STRAW            | 23,479      |



N/F  
EZEQUIEL &  
ADRIANA VERA NUNEZ  
D.B. 3341, PG. 909

SETBACKS: (PB 2019 PG 291)

FRONT - 35'  
SIDE - 10'  
REAR - 25'  
CORNER - 20'



SITE PLAN APPROVAL  
 DISTRICT RA 30 USE SFD  
 3 BEDROOMS  
 9-30-10 K.A.G.  
 ADMINISTRATOR

# NORRIS FARM DRIVE

50' PUBLIC R/W &  
UTILITY EASEMENT

| LINE  | BEARING     | DISTANCE   |           |             |
|-------|-------------|------------|-----------|-------------|
| L1    | N86°47'51"E | 13.00'     |           |             |
| CURVE | RADIUS      | ARC LENGTH | CH LENGTH | CH BEARING  |
| C1    | 335.00'     | 92.09'     | 91.80'    | N78°55'21"E |

THIS DRAWING DOES NOT  
REFLECT AS-BUILT INFORMATION