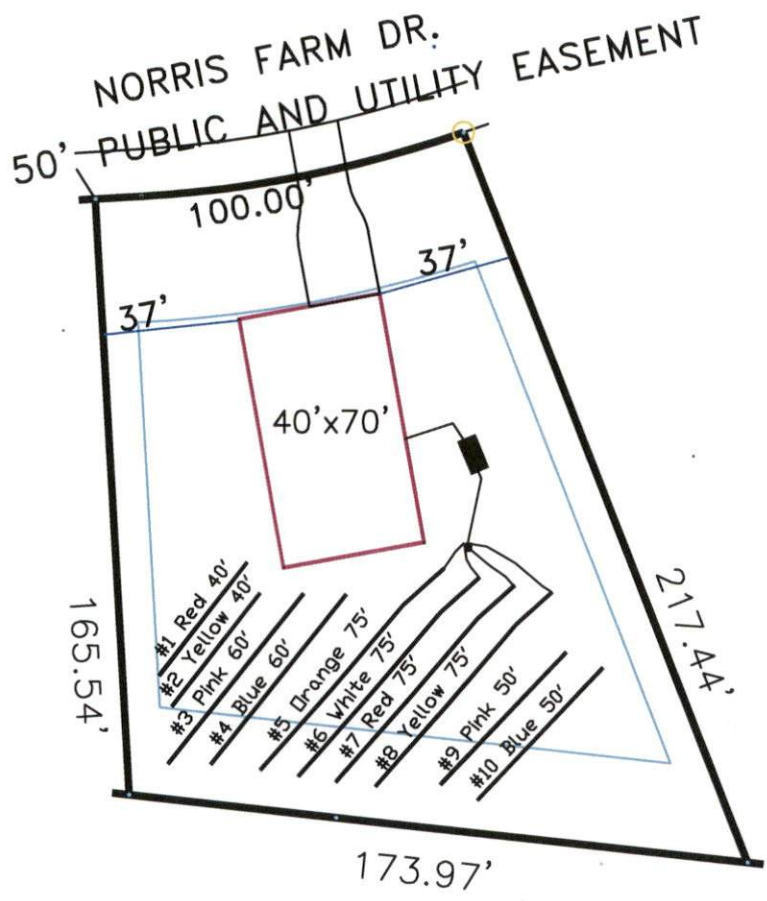


Norris Farm 4-Bedroom Septic Proposal Lot #22



22

0.576 AC.
25092 SF

System: Gravity D-Box
 Lines: 5-8 (300')
 0.4 LTAR
 24" Trench Bottom
 Accepted Status System
 Repair: Pressure Manifold
 Lines: 1-4, 9-10 (300')
 0.4 LTAR
 24" Trench Bottom
 Accepted Status System

GRAPHIC SCALE
1" = 50'



Adams
 Soil Consulting
 919-414-6761
 Job #574

Norris Farm

Lot #22

4-Bedroom Home (480 gal./day)

<u>LINE #</u>	<u>COLOR</u>	<u>BS</u>	<u>HI</u>	<u>FS</u>	<u>ELEVATION</u>	<u>LINE LENGTH</u>	<u>Design Length</u>
TBM		2.0		100.0		<u>in field</u>	<u>installation</u>
INST. 1			102.0				
1	Red			3	99	42	40
2	Yellow			3.3	98.7	45	40
3	Pink			3.6	98.4	63	60
4	Blue			4.1	97.9	60	60
5	Orange			4.7	97.3	105	75
6	White			4.9	97.1	97	75
7	Red			5.3	96.7	85	75
8	Yellow			5.5	96.5	75	75
9	Pink			5.8	96.2	65	50
10	Blue			6	96	55	50

System

Repair

Lines 5-8

1-4, 9-10

System Type

Accepted Status System

Accepted Status System

Suggested Soil LTAR

0.40

0.40

Total Line Length

300

300

Square Footage

900

900

Proposed Trench Bottom

18-24"

18-24"

Distribution Method

Gravity to D-Box

Pressure Manifold