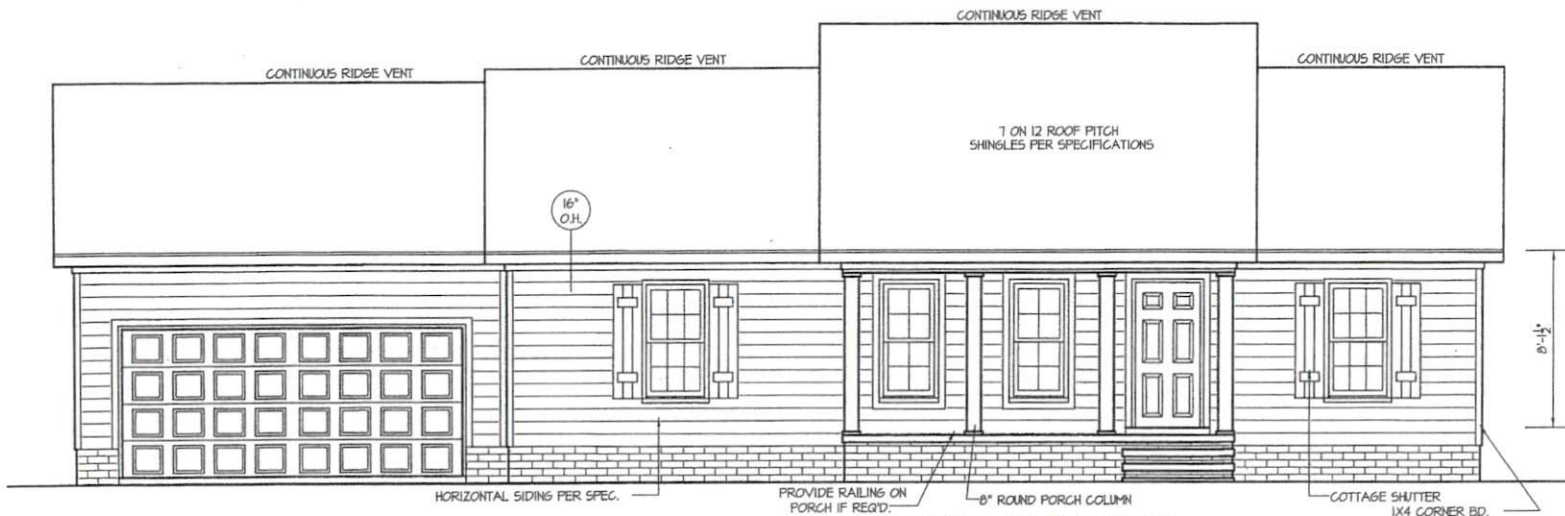


THIS PLAN IS DESIGNED TO MEET THE REQUIREMENTS OF THE NORTH CAROLINA RESIDENTIAL CODE 2018 EDITION



**FRONT ELEVATION**  
SCALE: 1/4" = 1'-0"

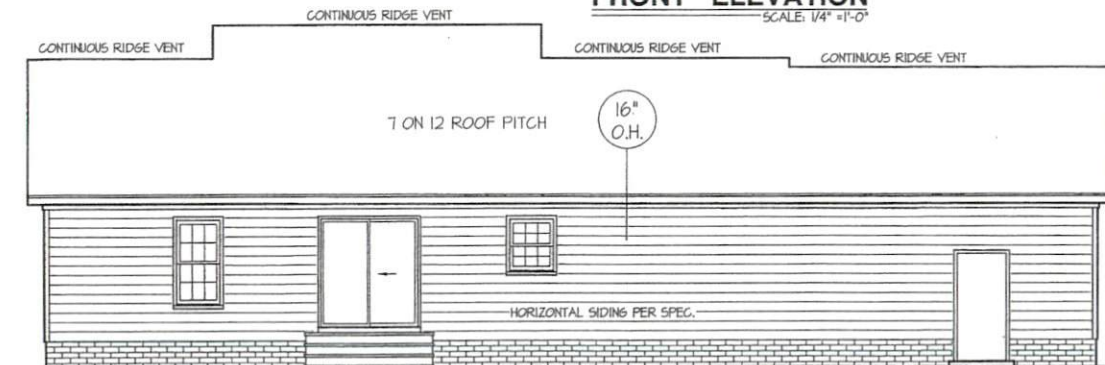
**INSULATION and FENESTRATION REQUIREMENTS**

CLIMATE ZONE	ZONE-3	ZONE-4
FENESTRATION U-FACTOR	0.35	0.35
GLAZED FENESTRATION SHGC	0.30	0.30
MINIMUM CEILING R-VALUE	R-35	R-35
MINIMUM WALL R-VALUE	R-15, I3+2.5	R-15, I3+2.5
MINIMUM FLOOR R-VALUE	R-11	R-11
MIN. CRAWL SPACE WALL R-VALUE	5/13	10/15
MIN. SLAB R-VALUE	0	R-10

PROVIDE STEPS AS REQUIRED  
GRADE MAY VARY - BUILDER TO VERIFY

**WIND ZONES (PER TABLE R301.2(4))**

COUNTY	MPH
HARNETT	120
JOHNSTON	120
SAMPSON	130
WAKE	115

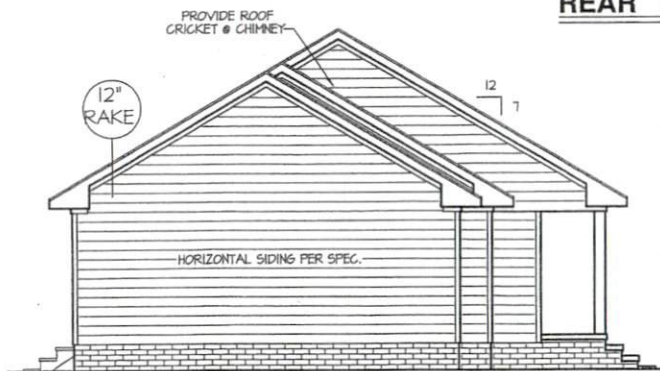


**REAR ELEVATION**  
SCALE: 3/16" = 1'-0"

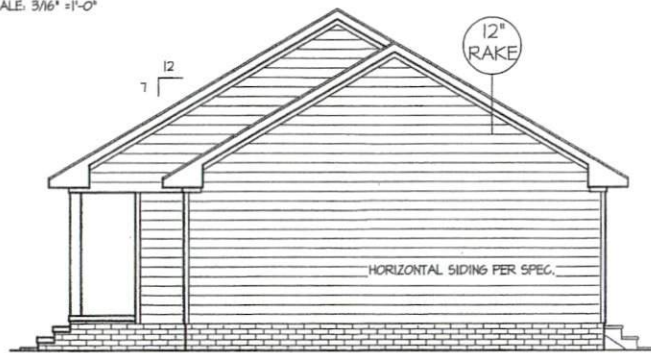
ROOF VENTILATION REQ'MENTS.  
1562 ATTIC SQ. FT. / 300 = 5.21

PROVIDED ON PLAN  
57 L.F. RIDGE VENT = 10.69  
114 L.F. SOFFIT VENT = 7.13  
TOTAL = 17.82 S.F. FREE NET AREA

ALL EXTERIOR WALLS TO BE SHEATHED WITH OSB (1/2" OSB) IN ACCORDANCE WITH SECTION R602.10.3 UNLESS OTHERWISE NOTED.



**LEFT ELEVATION**  
SCALE: 3/16" = 1'-0"



**RIGHT ELEVATION**  
SCALE: 3/16" = 1'-0"

COMPUTER FILE: FREEDOM FAMILY HOMES - SEPT.-2014

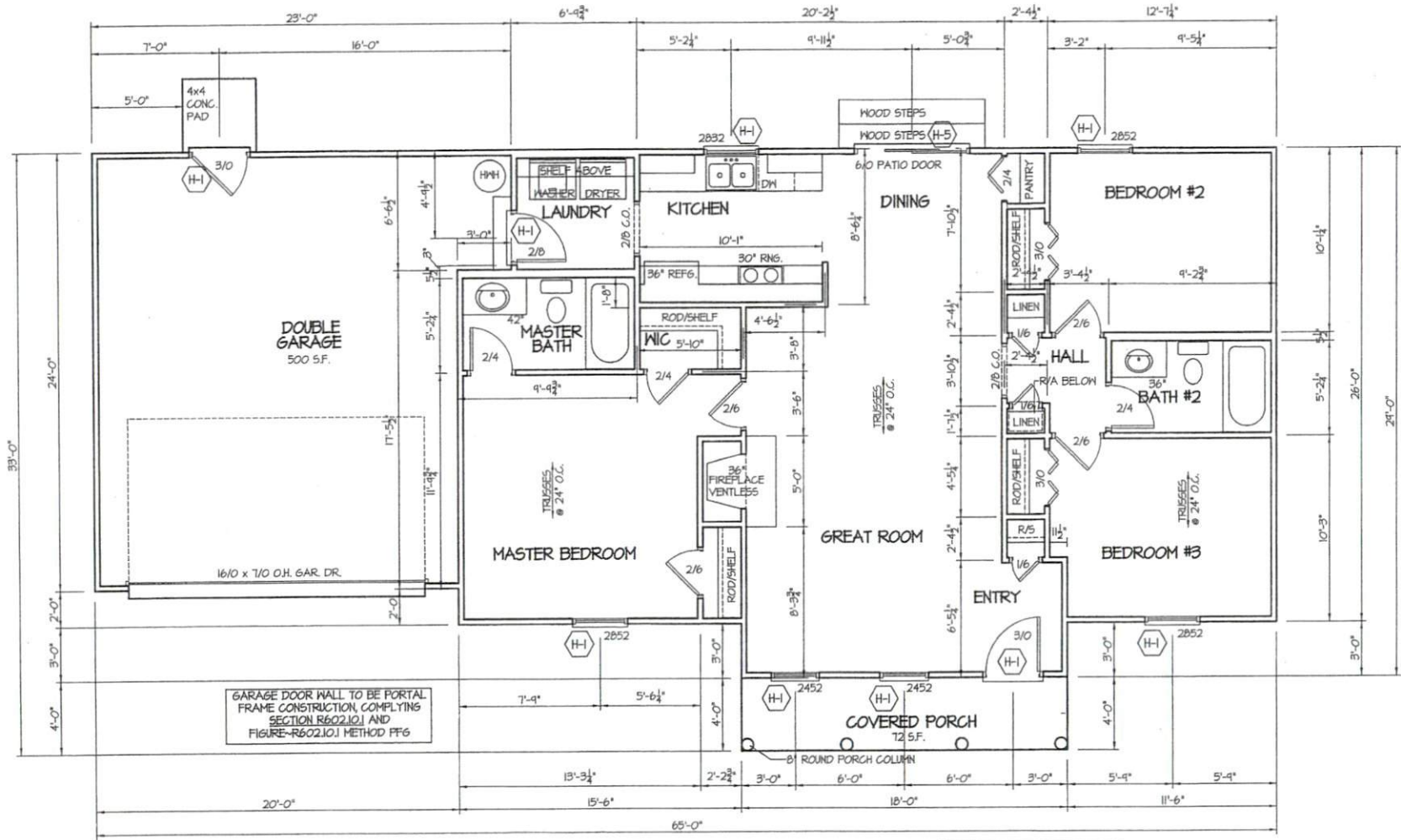
D  
 SEPT.  
 FREEDOM FAMILY HOMES  
 P.O. BOX 608  
 EXCLUSIVE PLAN FOR  
 FREEDOM FAMILY HOMES  
 PLAN:  
 SH



WIND ZONES (PER TABLE R301.2(4))

COUNTY	MPH
HARNETT	120
JOHNSTON	120
SAMPSON	130
WAKE	115

ALL EXTERIOR WALLS TO BE SHEATHED WITH OS-BSP (1/16" OSB) IN ACCORDANCE WITH SECTION R602.10.3 UNLESS OTHERWISE NOTED.



GARAGE DOOR WALL TO BE PORTAL FRAME CONSTRUCTION, COMPLYING SECTION R602.10.1 AND FIGURE-R602.10.1 METHOD PF6

TABLE R602.7.5  
MINIMUM NUMBER OF FULL HEIGHT STUDS AT EACH END OF HEADERS IN EXTERIOR WALLS

HEADER SPAN (feet)	MAX. STUD SPACING (inches) [per Table R602.3(5)]	
	16	24
< 3'	1	1
4'	2	1
8'	3	2
12'	5	3
16'	6	4

HEADER SCHEDULE

SYMBOL #	SIZE	JACKS
H-1	(2) 2x10	1
H-2	(2) 2x10	2
H-3	(2) 2x8	2
H-4	(2) 2x12	2
H-5	(2) 1.75 x 9.25 LVL	3

SECTION R407-COLUMNS  
R407.3 STRUCTURAL REQUIREMENTS.  
THE COLUMNS SHALL BE RESTRAINED TO PREVENT LATERAL DISPLACEMENT AT THE TOP AND BOTTOM END. WOOD COLUMNS SHALL BE NOT LESS IN NOMINAL SIZE THAN 4 INCHES BY 4 INCHES (102 mm BY 102 mm). STEEL COLUMNS SHALL BE NOT LESS THAN 3-INCH-DIAMETER (76 mm) SCHEDULE 40 PIPE MANUFACTURED IN ACCORDANCE WITH ASTM A53 GRADE B OR APPROVED EQUIVALENT.

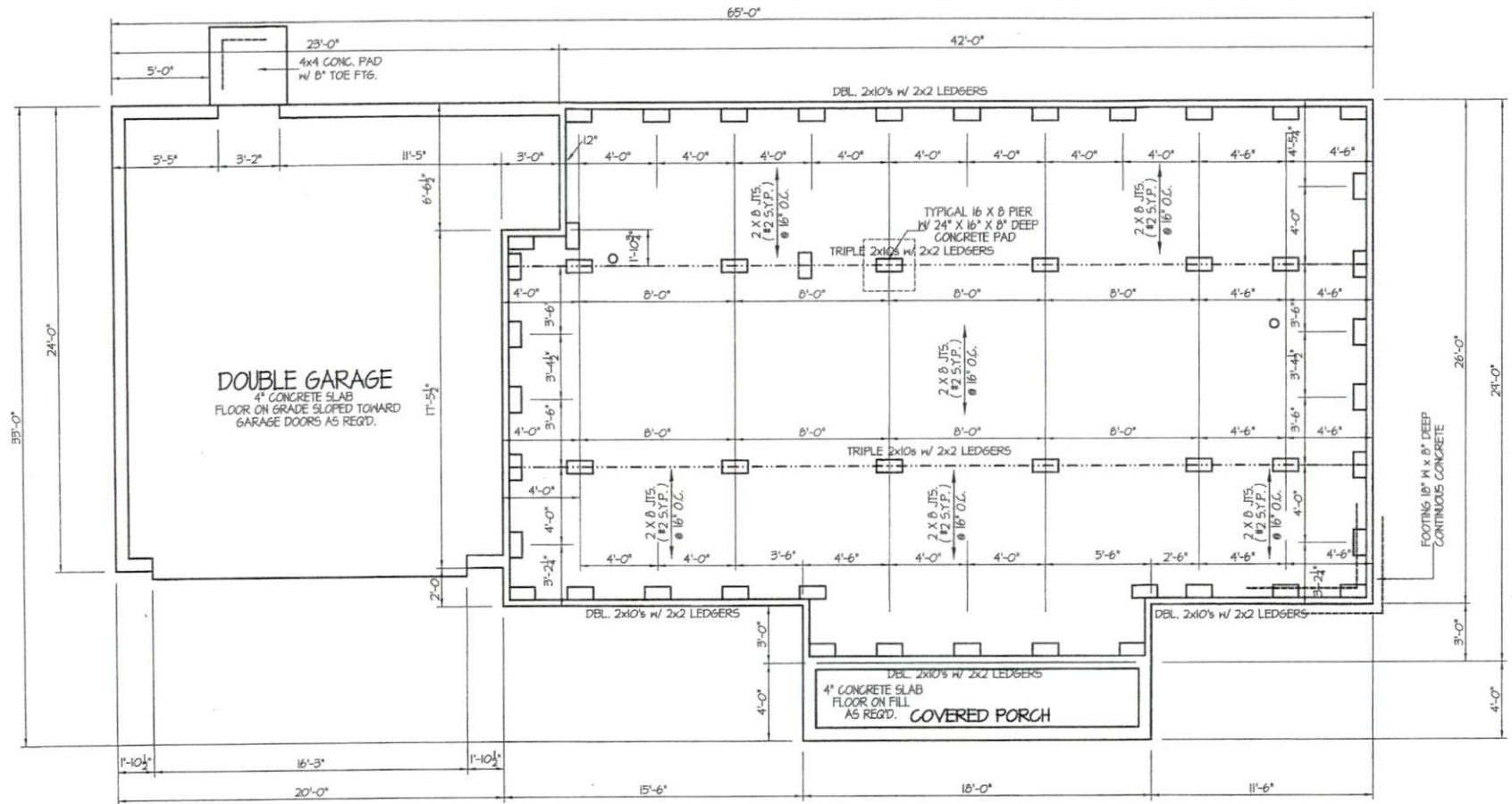
ALL INTERIOR AND EXTERIOR LOAD BEARING HEADERS WILL BE 2x10 #2 SFF UNLESS OTHERWISE NOTED.

GIRDER AND HEADER SIZES AND JACK STUD REQUIREMENTS ON EXTERIOR AND INTERIOR LOAD BEARING WALLS ARE TO COINCIDE WITH TABLE EXT.-R602.1 (1) AND INT.-R602.1 (2).

8' CL6, UNLESS OTHERWISE NOTE  
**FLOOR PLAN**  
SCALE: 1/4" = 1'-0"

1204 HEATED SQUARE FOOTAGE

COMPUTER FILE: FREEDOM FAMILY HOMES - SEPT-2018



ALL JOISTS AND GIRDERS WILL BE #2 S.Y.P.  
 JOIST SPANS TO COINCIDE WITH REVISED TABLES R502.3.1(1) and R502.3.1(2) FROM 2018 NCR CODES  
 GIRDER SPANS AND HEADER SPANS TO COINCIDE WITH TABLE R602.7(1), R602.7(2) AND R602.7(3).

**FOUNDATION ANCHORAGE**  
 THE WOOD SOLE PLATE AT EXTERIOR WALLS ON MONOLITHIC SLABS AND WOOD SILL PLATE SHALL BE ANCHORED TO THE FOUNDATION WITH ANCHOR BOLTS SPACED A MAXIMUM OF 4 FEET (1219.3 mm) ON CENTER AND NOT MORE THAN 12 INCHES (305 mm) FROM THE CORNER.  
 BOLTS SHALL BE AT LEAST 1/2 INCH (12.7 mm) IN DIAMETER AND SHALL EXTEND A MINIMUM OF 15 INCHES (178 mm) INTO MASONRY OR CONCRETE.

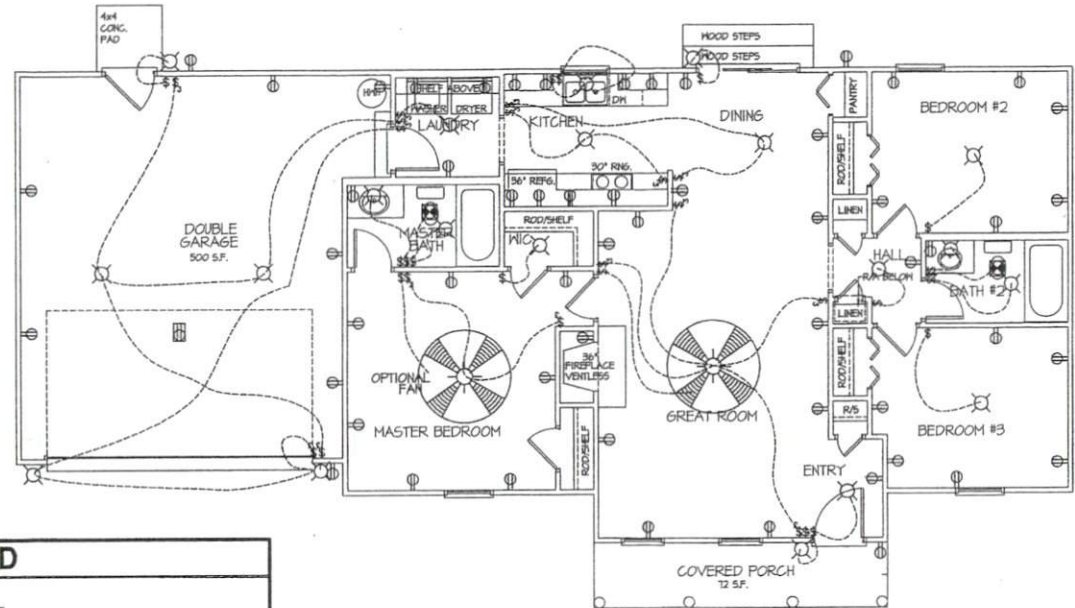
**FOUNDATION PLAN**  
 SCALE: 1/4" = 1'-0"

**FOUNDATION VENTILATION INFORMATION**  
 (MIN. NET AREA OF VENT. REQ'D. = 1/150)  
 154 S.F. (CRAML) x 96 = 11078.4 S.I.  
 USE 16" MITTEN AUTO. VENT. FND. VENTS @ 65 S.I. FREE NET AREA or EQUIVALENT.  
 (MIN. NET AREA CAN BE REDUCED TO 1/1500)  
 154 S.F. (CRAML) x 246 = 11078 S.I.  
 USE 2" MITTEN AUTO. VENT. FND. VENTS @ 65 S.I. FREE NET AREA or EQUIVALENT.  
 w/ APPROVED 6-mil POLYETHYLENE VAPOR RETARDER or EQUIVALENT IN CRAML SPACE.  
 REQUIRED VENTS ARE TO BE PLACED SO AS TO PROVIDE CROSS-VENTILATION OF THE CRAML SPACE.

**NOTES:**  
 USE DBL. 2x10 BANDS w/ 2x2 LEDGER ON 4" WALLS  
 USE TRIPLE 2x10 GIRDERS w/ 2x2 LEDGERS  
 USE 2x8 JOISTS AT 16" O.C., ADD 5/8" JOIST UNDER PARALLEL INTERIOR WALLS AS REQ'D.  
 PROVIDE 24 X 36 ACCESS OPENING IN FND. WALL. PROVIDE STEPS TO GRADE (MAX. 8")

**FOUNDATION DRAINAGE**  
 A DRAINAGE SYSTEM IS NOT REQUIRED WHEN THE FOUNDATION IS INSTALLED ON WELL-DRAINED GROUND OR SAND-GRAVEL MIXTURE SOILS ACCORDING TO THE UNIFIED SOIL CLASSIFICATION SYSTEM, GROUP 1 SOILS, AS DETAILED IN TABLE R405J

SEPT  
 FREEDOM FAMILY HOMES  
 EXCLUSIVE PLAN FOR  
 PLAN:

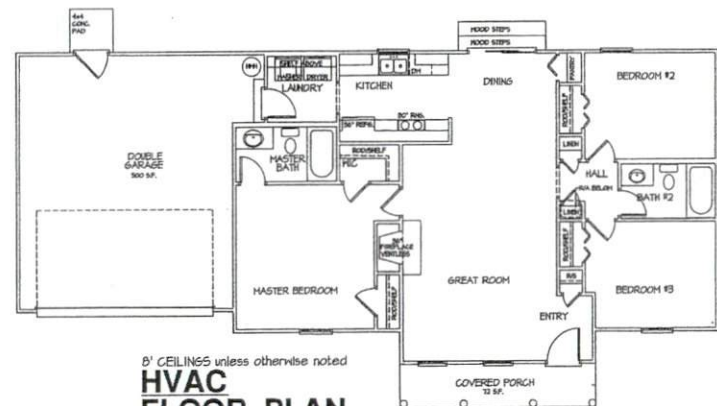


8' CEILING unless otherwise noted  
**ELECTRICAL FLOOR PLAN**  
 SCALE: 3/16" = 1'-0"  
 TOTAL HEATED = 1204 S.F.

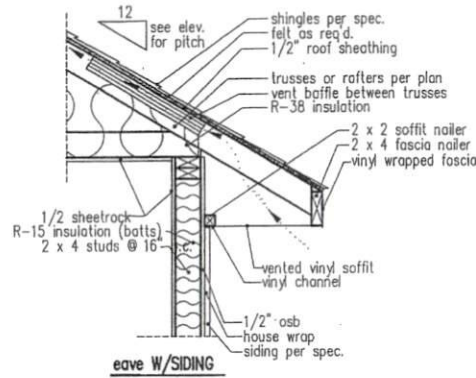
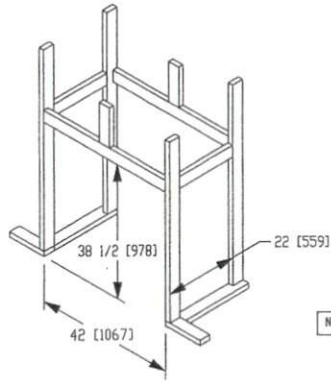
ELECTRICAL LEGEND		
PROVIDE BURGLAR/SMOKE AND FIRE DETECTORS AS PER MANUFACTURER'S SPECIFICATIONS. PROVIDE CENTRAL VACUUM SYSTEM AS PER MANUFACTURER'S SPECIFICATIONS. ALL FANS ARE TO BE CONTROLLED BY VAR/SPEED AND DIRECTIONAL SWITCHES		
⊕ SURF. MOUNTED LIGHT	⊖ TYPICAL WALL RECEP.	⊕ TYPICAL SWITCH
○ RECESSED LIGHT	⊖ TOP 1/2 HOT W/SWITCH	⊖ 3-WAY SWITCH
⊖ EYEBALL LIGHT	⊖ CEILING RECEPTACLE	⊖ 4-WAY SWITCH
⊖ FAN/LIGHT COMB.	⊖ FLOOR RECEPTACLE	⊖ DIMMER SWITCH
— FLUORESCENT TUBE	⊖ WATERPROOF RECEP.	⊖ ELEC. PANEL BOX
□ FLUOR. LIGHT FIXTURE	⊖ GROUND FAULT	⊖ T.V. CABLE RECEP.
⊖ EXHAUST FAN	⊖ DISPOSAL UNIT	⊖ TELEPHONE JACK
⊖ CL'G. FAN	⊖ 220 VOLT RECEPTACLE	⊖ COMPUTER JACK
⊖ FLOOD LIGHT		

TOTAL HEAT GAIN = 25,403 B.T.U.H.  
 TOTAL HEAT LOSS = 36,361 B.T.U.H.

NOTE:  
 HVAC CONTRACTOR TO PROVIDE OWNERS AND BUILDERS UNIT INFORMATION, BTUH REQUIREMENTS, AND DUCT LAYOUTS BEFORE CONSTRUCTION BEGINS.

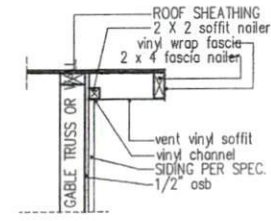


8' CEILING unless otherwise noted  
**HVAC FLOOR PLAN**  
 SCALE: 1/8" = 1'-0"  
 TOTAL HEATED = 1204 S.F.



NOTE: OVERHANG DISTANCE NOTED ON ELEVATION SHEET IS ALWAYS MEASURED FROM FRAME LINE

standard eave details



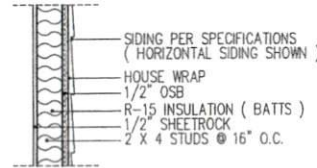
RAKE w/SIDING

NOTE: OVERHANG DISTANCE NOTED ON ELEVATION SHEET IS ALWAYS MEASURED FROM FRAME LINE

DIMENSIONS IN ( ) ARE MM

Model 6000-TR	Height		Front Width		Back Width		Depth		Glass Size	BTU Input
	Actual	Framing	Actual	Framing	Actual	Framing	Actual	Framing		
Inches	36	38-1/2	41	42	28-1/2	42	21-1/2	22		

Reference dimensions only. We recommend measuring individual units at installation.



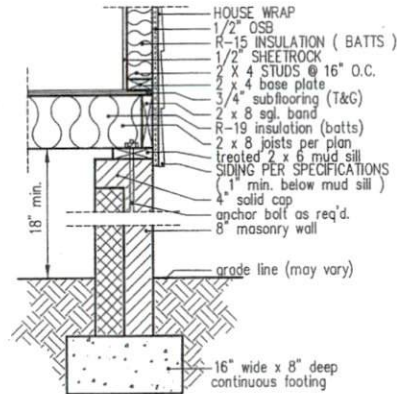
WALL W/siding

intermediate wall details

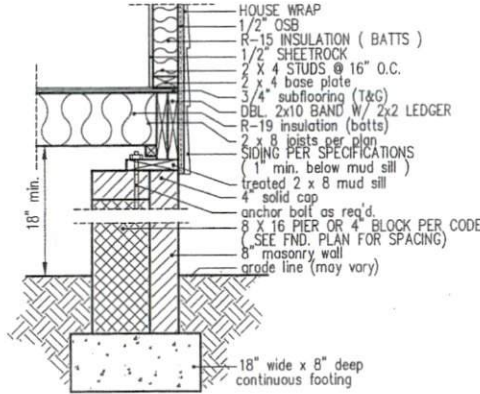
TABLE R602.1.5  
MINIMUM NUMBER OF FULL HEIGHT STUDS AT EACH END OF HEADERS IN EXTERIOR WALLS

HEADER SPAN (feet)	MAX STUD SPACING (Inches) [per Table R602.3(5)]	
	16	24
< 3'	1	1
4'	2	1
6'	3	2
12'	5	3
16'	6	4

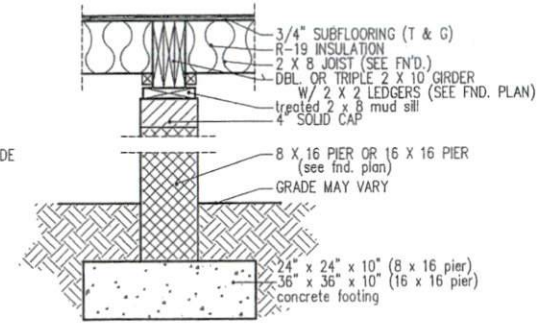
GIRDER AND HEADER SIZES AND JACK STUD REQUIREMENTS ON EXTERIOR AND INTERIOR LOAD BEARING WALLS ARE TO COINCIDE WITH TABLE EXT.-R602.1 (1) AND INT.-R602.1 (2).



8" BOX SILL FOUNDATION WALL



PIER and CURTAIN FOUNDATION WALL



PIER and GIRDER DETAIL