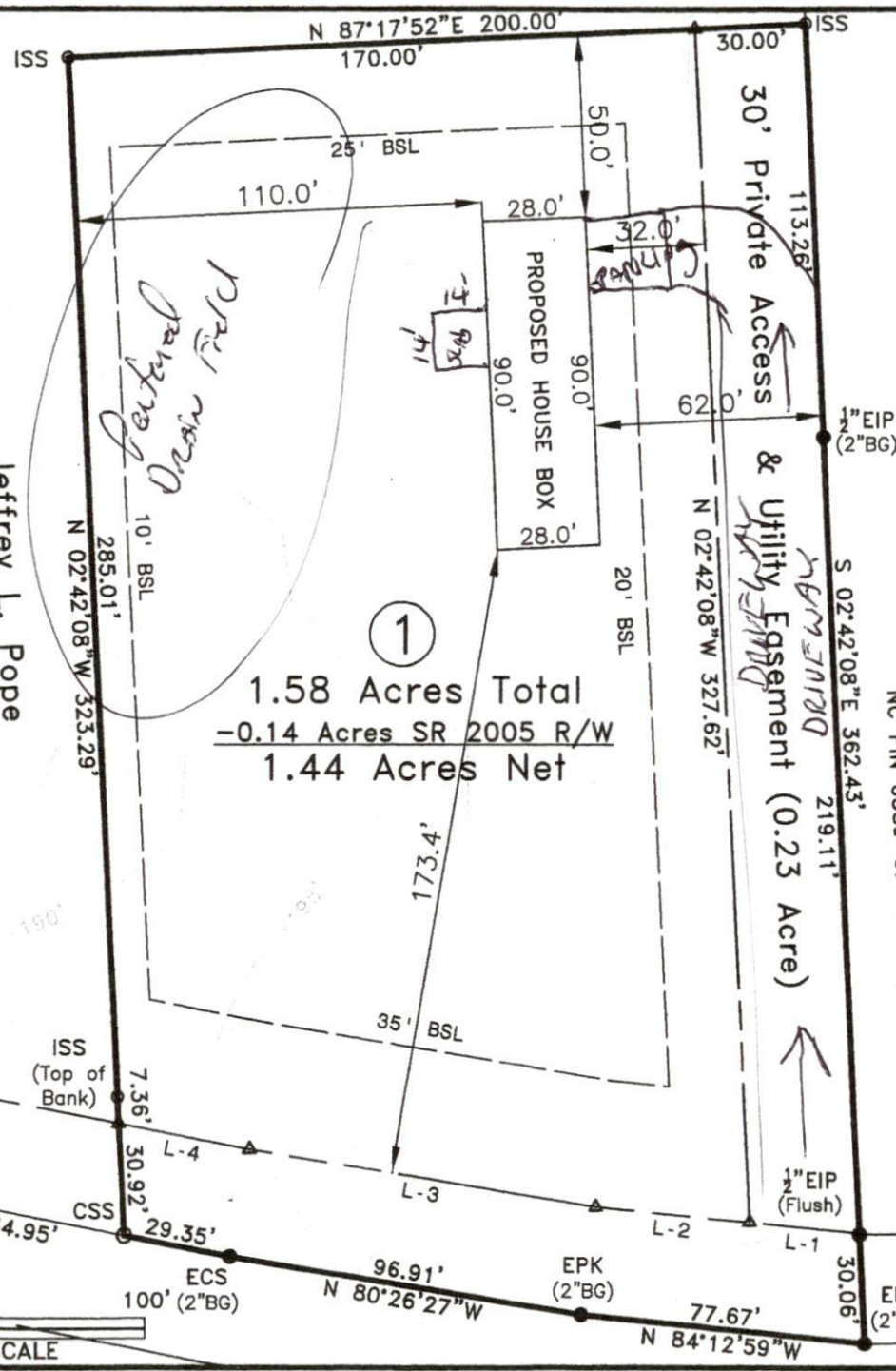


MAP #2019-315

Jeffrey L. Pope
 D.B. 3653, Pg. 934
 Plat Cabinet #F, Slide 602-D
 NC PIN 0589-58-3547.000



1
 1.58 Acres Total
 -0.14 Acres SR 2005 R/W
 1.44 Acres Net

Call Table:

Course	Bearing	Distance
L-1	N 83°42'32" W	30.37'
L-2	N 84°12'59" W	41.87'
L-3	N 80°26'27" W	95.47'
L-4	N 78°42'51" W	36.37'

LEGEND:

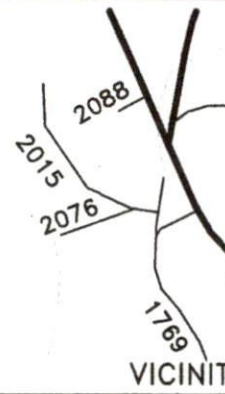
- Subject Boundary Line
- Adjoining Boundary Line
- R/W Right-of-Way Line
- C/L Centerline
- Easement Line
- MBL Minimum Building Line
- CP Calculated Point

FEMA FLOOD HAZARD STATEMENT
 The lot shown on this plat is not located within the FEMA 1% Annual chance Flood Hazard Area as shown on FEMA map No. 3720058900J
 Effective date: 10/3/2006

Nancy Denise L. Cole
 and Jerry Dale Lucas
 Estate File: 15E-516
 D.B. 788, Pg. 74
 NC PIN 0589-67-1520.000

NCSR 2005
 60' Public R/W
 "Brick Mill Road"

To ECS (2"BG) at C/L
 Intersection with S.R. 2006
 N 89°06'27"E 745.81'



~ Bridge
 Lot 1, Map

Survey
 Jeffrey

Neill's Creek Twp.

Scale: 1" = 50'

Surveyed &
STREAM
LAND SURV
 NC FIRM
 870 NC 55 W, C
 Phone: 910

~PRELIMINARY

- Not an a
 This plan represents p
 to a lot of record. T
 review and approval b
 and Inspections Depart

NOT FOR F

