

THIS LAYOUT IS TO BE USED AS A TRUSS PLACEMENT GUIDE ONLY.  
PLEASE REFER TO BUILDING PLANS FOR BUILDING CONSTRUCTION AND DETAILS,  
SUCH AS PLUMBING OR DUCT DROPS.

Permit Layout

Job #  
**Q-1901805**

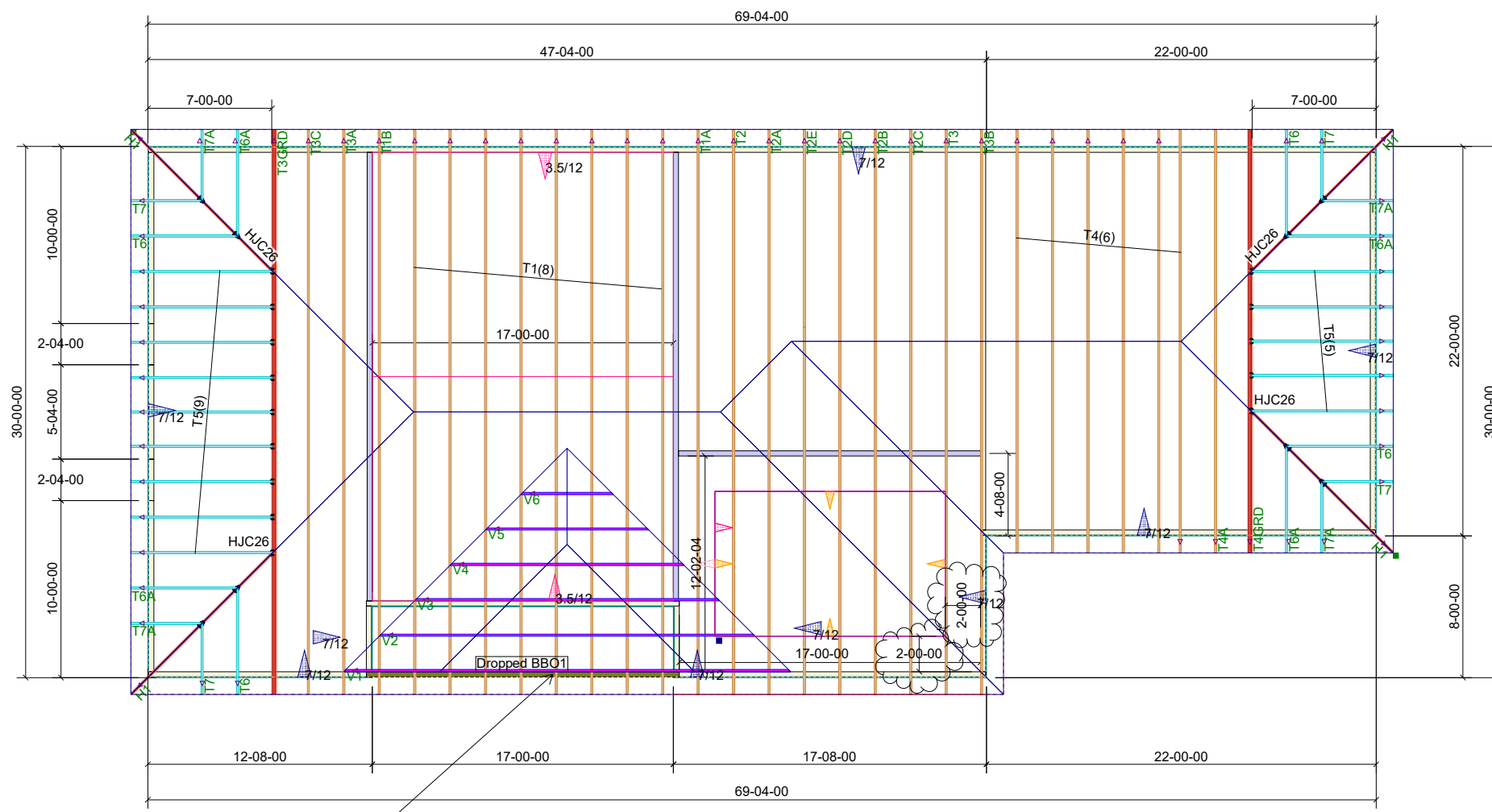
Phillips' Hip RF  
Erwin NC

Date Quoted:  
**10/4/2019 12:00:00 AM**

Designer:  
**Torrance Hamilton**

JE Womble and Sons  
805 W Front St  
Lillington, NC  
27546

**Peak Truss Builders, LLC**  
PO Box 340, New Hill, NC 27562



Phillips-Hip  
Roof Trusses  
2' OC, 1' OH

Truss Connector Total List		
Manuf	Product	Qty
USP	HJC26	4

- Notes:
- Exterior dimensions shown are assumed to be:
    - ☐ Out-to-out of stud
    - ☒ Out-to-out of sheathing
  - Adjust truss locations as needed for plumbing and mechanical clearance. Unless otherwise noted, trusses may be shifted as long as O.C. spacing shown is not exceeded.
  - Do not cut, drill, or otherwise damage any part of any truss without prior approval from Peak Truss.
  - Do not approve drawings if any information herein is unclear. Once ordered trusses will be fabricated as approved.
  - Please contact Peak Truss Builders with any questions. We are available to help any way we can. We can be reached at 919-545-5555 or sales@peaktruss.com

Roof Truss Loading per 2018 NC Residential Code

Top Chord Live Load 20# PSF  
Top Chord Dead Load 10# PSF  
Bottom Chord Live Load 0# PSF  
Bottom Chord Dead Load 10# PSF

Trusses are designed for additional storage load wherever a 42"x24" box will fit between the webs.

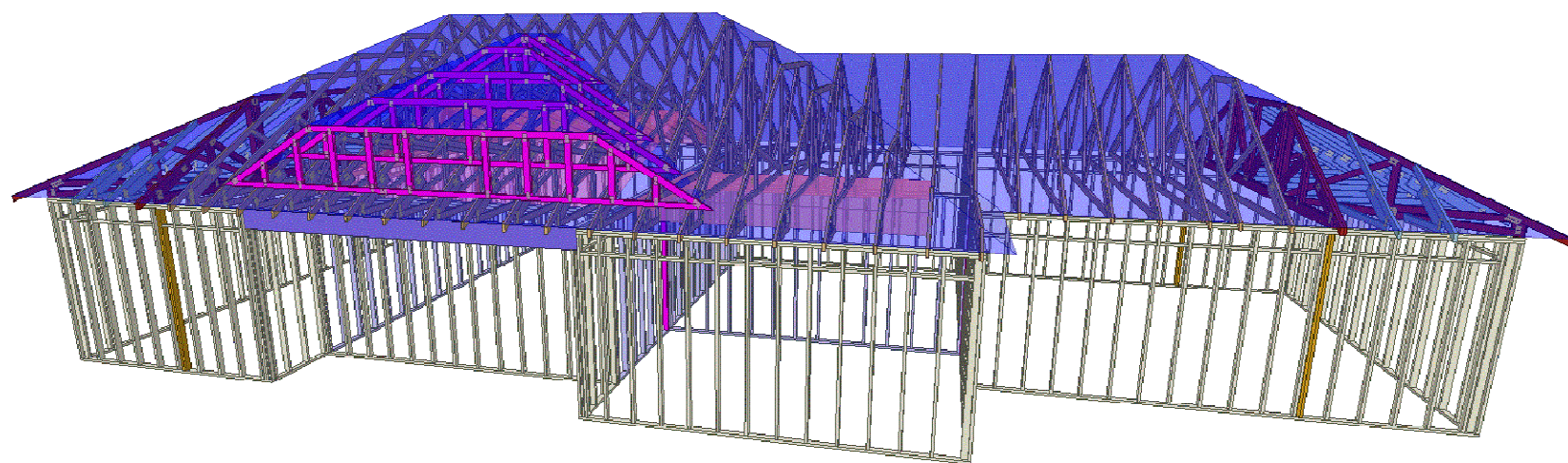
△ - This symbol denotes left end of truss as shown on truss drawings

● - Approximate location of toilet drop. Builder please confirm.

Truss connections by others:

⊕ -Nailed

⊔ -Ledger



Center stud removed for vent