

THIS LAYOUT IS TO BE USED AS A TRUSS PLACEMENT GUIDE ONLY.
PLEASE REFER TO BUILDING PLANS FOR BUILDING CONSTRUCTION AND DETAILS,
SUCH AS PLUMBING OR DUCT DROPS.

Permit Layout

Job #
Q-1901806

Phillips' Gable RF
Erwin NC

Date Quoted:
10/4/2019 12:00:00 AM
Designer:
Torrance Hamilton

JE Womble and Sons
805 W Front St
Lillington, NC
27546

Peak Truss Builders, LLC
PO Box 340, New Hill, NC 27562

Phillips-Gable
Roof Trusses
2' OC, 1' OH

- Notes:
- Exterior dimensions shown are assumed to be:
 - ☐ Out-to-out of stud
 - ☒ Out-to-out of sheathing
 - Adjust truss locations as needed for plumbing and mechanical clearance. Unless otherwise noted, trusses may be shifted as long as O.C. spacing shown is not exceeded.
 - Do not cut, drill, or otherwise damage any part of any truss without prior approval from Peak Truss.
 - Do not approve drawings if any information herein is unclear. Once ordered trusses will be fabricated as approved.
 - Please contact Peak Truss Builders with any questions. We are available to help any way we can. We can be reached at 919-545-5555 or sales@peaktruss.com

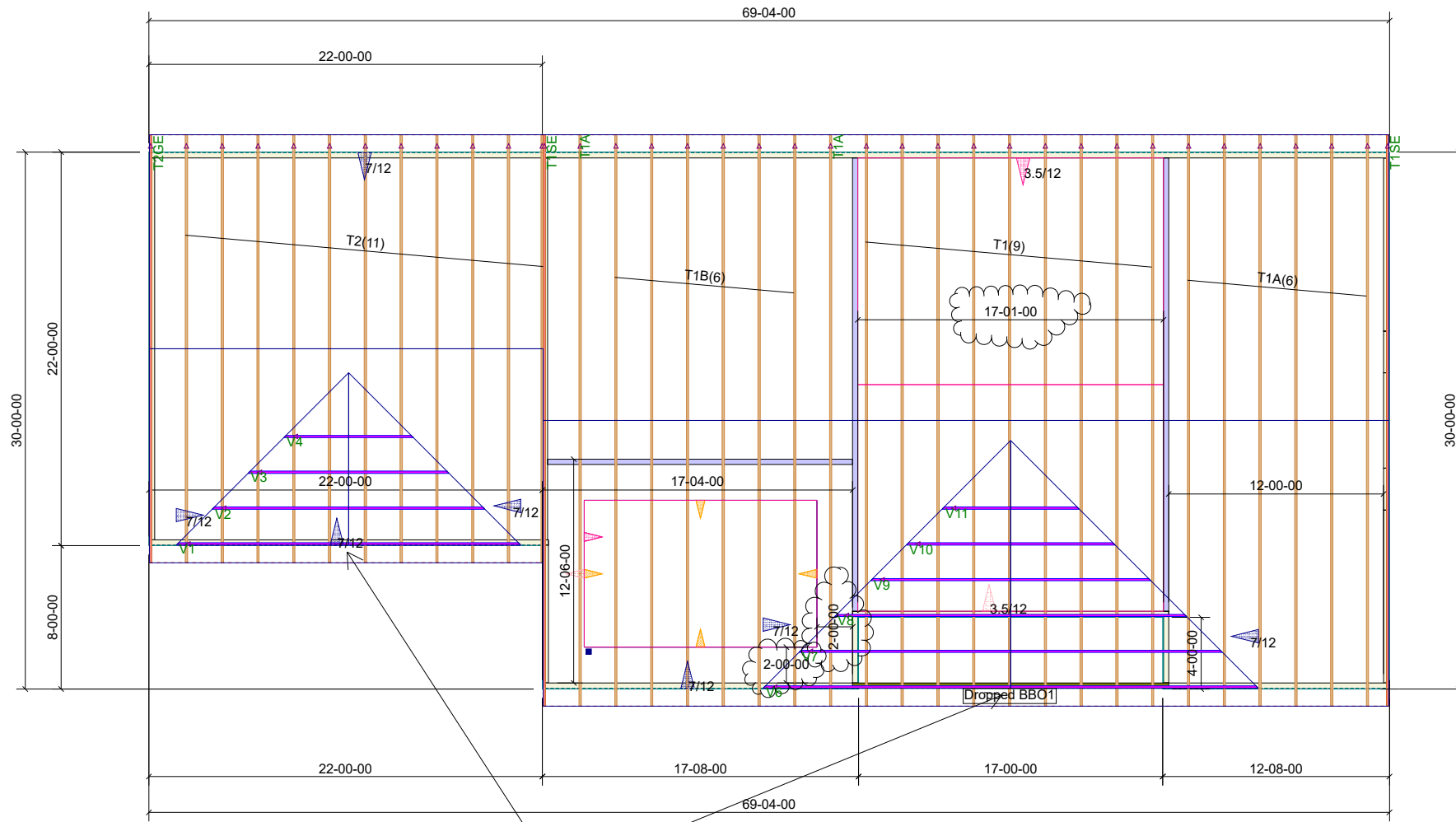
Roof Truss Loading per 2018 NC Residential Code

Top Chord Live Load	20# PSF
Top Chord Dead Load	10# PSF
Bottom Chord Live Load	0# PSF
Bottom Chord Dead Load	10# PSF

Trusses are designed for additional storage load wherever a 42"x24" box will fit between the webs.

- △ - This symbol denotes left end of truss as shown on truss drawings
- - Approximate location of toilet drop. Builder please confirm.

- Truss connections by others:
- ⊕ - Nailed
 - ⊖ - Ledger



Center stud removed for vent

