

COMMENTS: _____

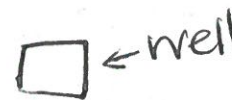
| LANDSCAPE POSITIONS | GROUP | TEXTURES | .1955 LTAR | CONSISTENCE MOIST | WET |
|---------------------|-------|---------------------|------------|--------------------|----------------|
| R-RIDGE | I | S-SAND | 1.2 - 0.8 | VFR-VERY FRIABLE | NS-NON-STICKY |
| S-SHOULDER SLOPE | | LS-LOAMY SAND | | | |
| L-LINEAR SLOPE | II | SL-SANDY LOAM | 0.8 - 0.6 | FI-FIRM | S-STICKY |
| FS-FOOT SLOPE | | L-LOAM | | | |
| N-NOSE SLOPE | | | | | |
| H-HEAD SLOPE | III | SI-SILT | 0.6 - 0.3 | VFI-VERY FIRM | VS-VERY STICKY |
| CC-CONCLAVE SLOPE | | SIL-SILT LOAM | | | |
| CV-CONVEX SLOPE | | CL-CLAY LOAM | | | |
| T-TERRACE | | SCL-SANDY CLAY LOAM | | | |
| FP-FLOOD PLAN | IV | SIC-SILTY CLAY | 0.4 - 0.1 | EFI-EXTREMELY FIRM | NP-NON-PLASTIC |
| | | C-CLAY | | | |
| | | SC-SANDY CLAY | | | |

STRUCTURE

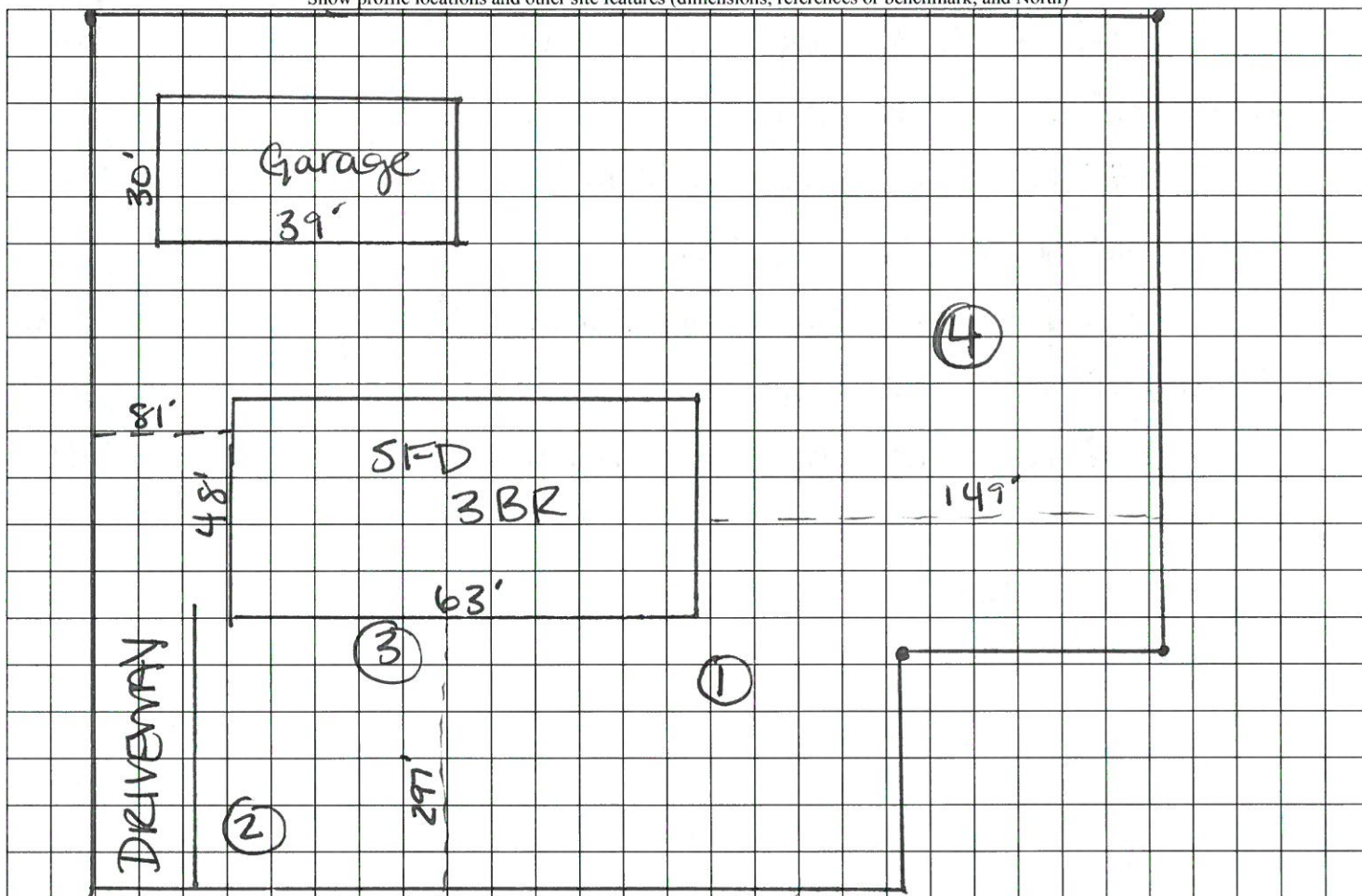
- SG-SINGLE GRAIN
- M- MASSIVE
- CR-CRUMB
- GR-GRANULAR
- SBK-SUBANGULAR BLOCKY
- ABK-ANGULAR BLOCKY
- PL-PLATY
- PR-PRISMATIC

MINERALOGY

- SLIGHTLY EXPANSIVE
- EXPANSIVE



Show profile locations and other site features (dimensions, references or benchmark, and North)



Williamstown Ln.