

THIS LAYOUT IS TO BE USED AS A TRUSS PLACEMENT GUIDE ONLY.  
PLEASE REFER TO BUILDING PLANS FOR BUILDING CONSTRUCTION AND DETAILS,  
SUCH AS PLUMBING OR DUCT DROPS.

PROPOSED DESIGN-  
NOT FOR  
CONSTRUCTION

Job #

Q-2001892

Weaver Smith Residence V2  
503 Ballard Rd  
Fuquay Varina NC

Date Quoted:

Designer:  
**Aron Meeks**

JE Womble and Sons  
805 W Front St  
Lillington, NC  
27546

**Peak Truss  
Builders, LLC**  
PO Box 340, New Hill, NC 27562

- Notes:
- Exterior dimensions shown are assumed to be:
    - Out-to-out of stud
    - Out-to-out of sheathing
  - Adjust truss locations as needed for plumbing and mechanical clearance. Unless otherwise noted, trusses may be shifted as long as O.C. spacing shown is not exceeded.
  - Do not cut, drill, or otherwise damage any part of any truss without prior approval from Peak Truss.
  - Do not approve drawings if any information herein is unclear. Once ordered trusses will be fabricated as approved.
  - Please contact Peak Truss Builders with any questions. We are available to help any way we can. We can be reached at 919-545-5555 or sales@peaktruss.com

Roof Truss Loading per  
2018 NC Residential Code

Top Chord Live Load 20# PSF  
Top Chord Dead Load 10# PSF  
Bottom Chord Live Load 0# PSF  
Bottom Chord Dead Load 10# PSF

Trusses are designed for additional storage load wherever a 42"x24" box will fit between the webs.

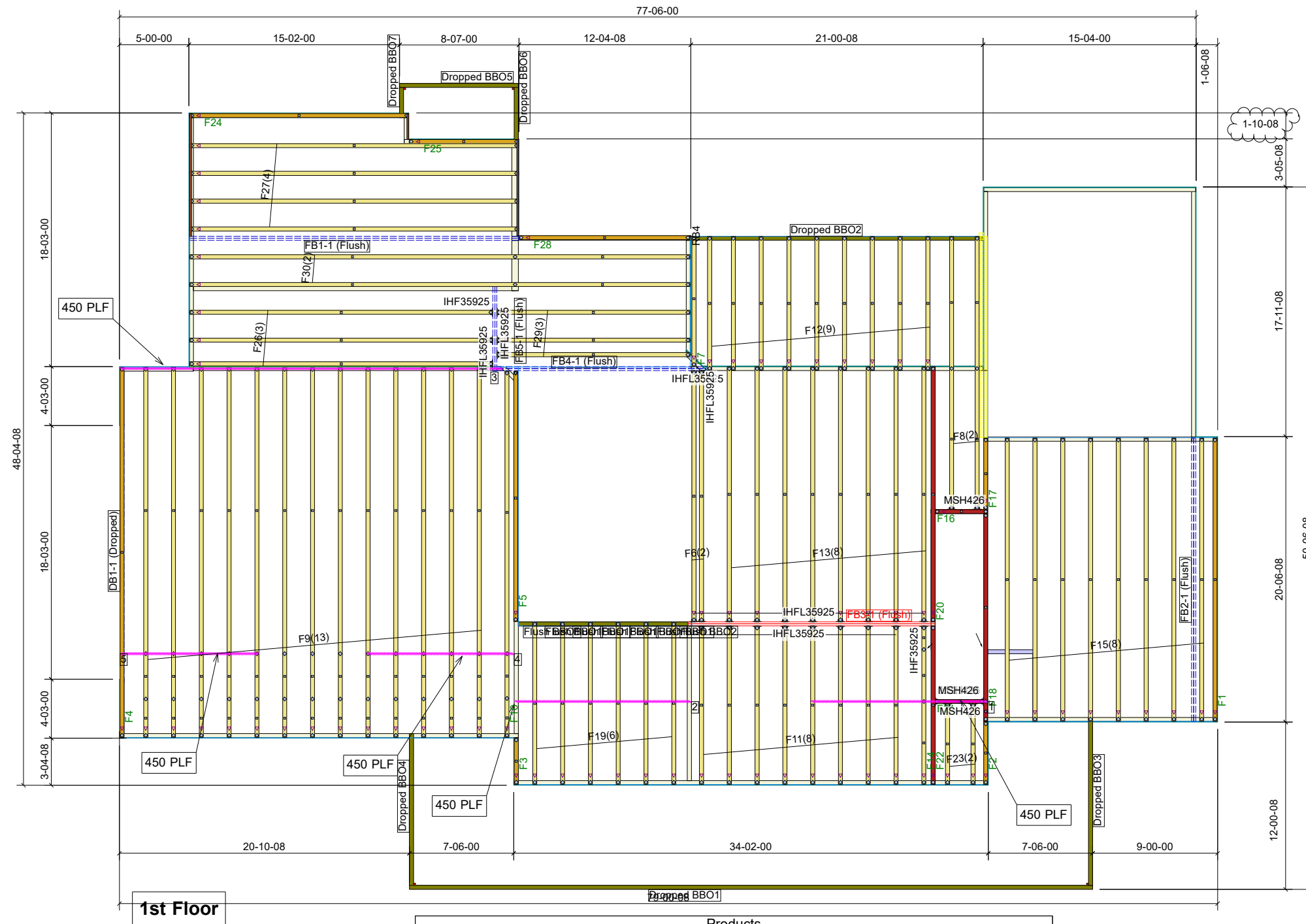
- △ - This symbol denotes left end of truss as shown on truss drawings
- - Approximate location of toilet drop. Builder please confirm.

Truss connections by others:

- ⊖ - Nailed
- ⊕ - Ledger

Weaver-Smith Resd  
Floor Trusses  
24" Depth  
2' OC

Truss Connector Total List		
Manuf	Product	Qty
USP	IHF35925	2
USP	IHFL35925	26
USP	MSH426	6



1st Floor

Products					
PlotID	Length	Product	Plies	Net Qty	Fab Type
DB1-1 (Dropped)	20-00-00	1-3/4X11-7/8 LP-LVL 2900Fb-2.0E	2	2	MFD
FB1-1 (Flush)	24-00-00	1-3/4X24 LP-LVL 2900Fb-2.0E	2	2	MFD
FB2-1 (Flush)	22-00-00	1-3/4X24 LP-LVL 2900Fb-2.0E	2	2	MFD
FB3-1 (Flush)	18-00-00	1-3/4X24 LP-LVL 2900Fb-2.0E	2	2	MFD
FB4-1 (Flush)	16-00-00	1-3/4X24 LP-LVL 2900Fb-2.0E	2	2	MFD
FB5-1 (Flush)	8-00-00	1-3/4X24 LP-LVL 2900Fb-2.0E	2	2	MFD

THIS LAYOUT IS TO BE USED AS A TRUSS PLACEMENT GUIDE ONLY.  
PLEASE REFER TO BUILDING PLANS FOR BUILDING CONSTRUCTION AND DETAILS,  
SUCH AS PLUMBING OR DUCT DROPS.

PROPOSED DESIGN-  
NOT FOR  
CONSTRUCTION

Job #

Q-2001892

Weaver Smith Residence V2  
503 Ballard Rd  
Fuquay Varina NC

Date Quoted:

Designer:  
**Aron Meeks**

JE Womble and Sons  
805 W Front St  
Lillington, NC  
27546

**Peak Truss  
Builders, LLC**  
PO Box 340, New Hill, NC 27562

- Notes:
- Exterior dimensions shown are assumed to be:
    - Out-to-out of stud
    - Out-to-out of sheathing
  - Adjust truss locations as needed for plumbing and mechanical clearance. Unless otherwise noted, trusses may be shifted as long as O.C. spacing shown is not exceeded.
  - Do not cut, drill, or otherwise damage any part of any truss without prior approval from Peak Truss.
  - Do not approve drawings if any information herein is unclear. Once ordered trusses will be fabricated as approved.
  - Please contact Peak Truss Builders with any questions. We are available to help any way we can. We can be reached at 919-545-5555 or sales@peaktruss.com

Roof Truss Loading per 2018 NC Residential Code

Top Chord Live Load 20# PSF  
Top Chord Dead Load 10# PSF  
Bottom Chord Live Load 0# PSF  
Bottom Chord Dead Load 10# PSF

Trusses are designed for additional storage load wherever a 42"x24" box will fit between the webs.

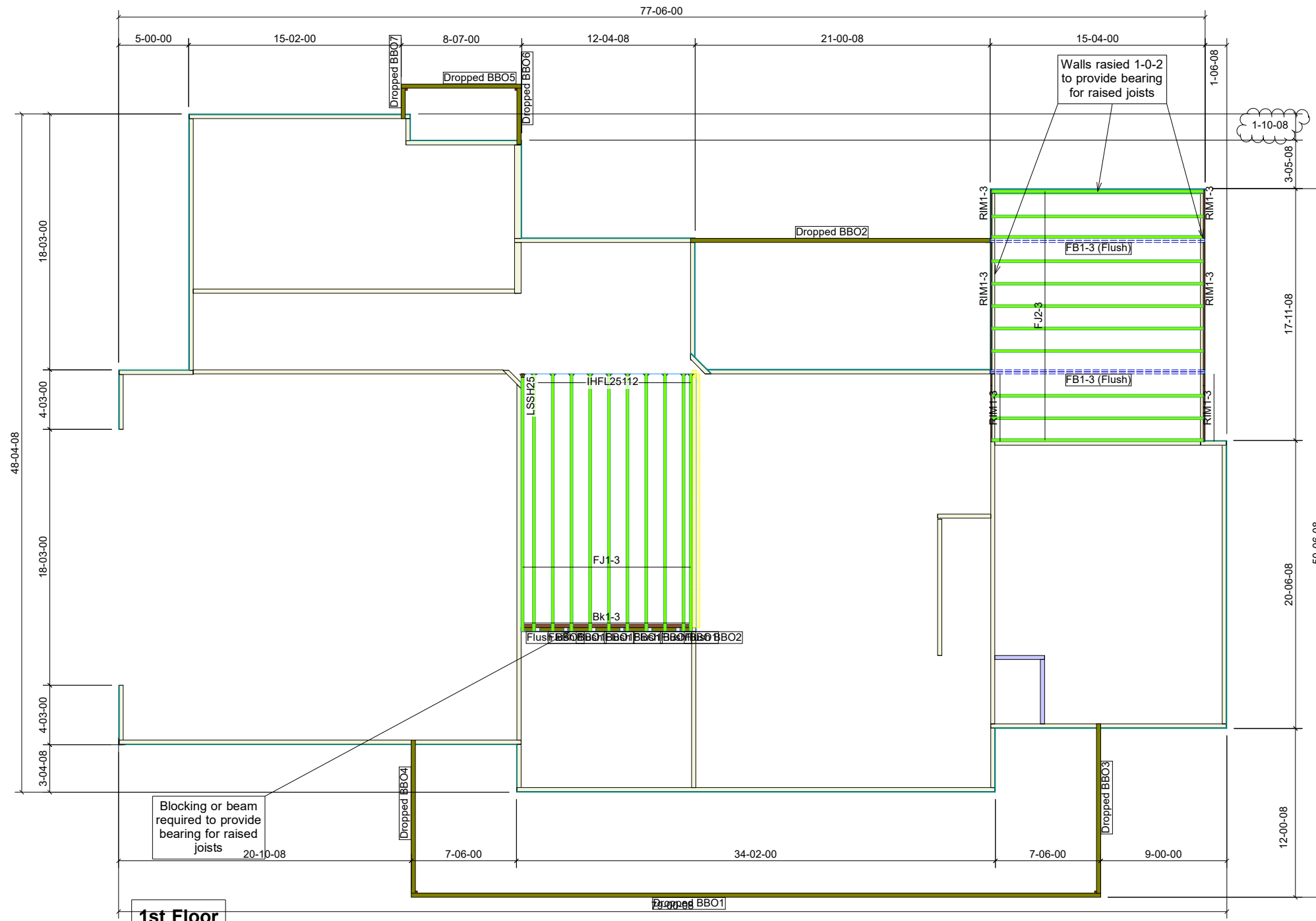
- △ - This symbol denotes left end of truss as shown on truss drawings
- - Approximate location of toilet drop. Builder please confirm.

Truss connections by others:

- N - Nailed
- L - Ledger

Weaver-Smith Resd  
I-Joists  
11-7/8" Depth  
19.2" OC

Connector Summary		
Qty	Manuf	Product
10	USP	IHFL25112
1	USP	LSSH25



1st Floor

Products					
PlotID	Length	Product	Plies	Net Qty	Fab Type
FJ1-3	20-00-00	11-7/8" LPI 20Plus	1	11	MFD
FJ2-3	16-00-00	11-7/8" LPI 20Plus	1	11	MFD
FB1-3 (Flush)	16-00-00	1-3/4X11-7/8 LP-LVL 2900Fb-2.0E	2	4	MFD
RIM1-3	36-00-00	1-1/8X11-7/8 LP-OSB Plus	1	1	FF
Bk1-3	10-00-00	11-7/8" LPI 20Plus	1	1	FF