

**Crosslink Subdivison Phase III**

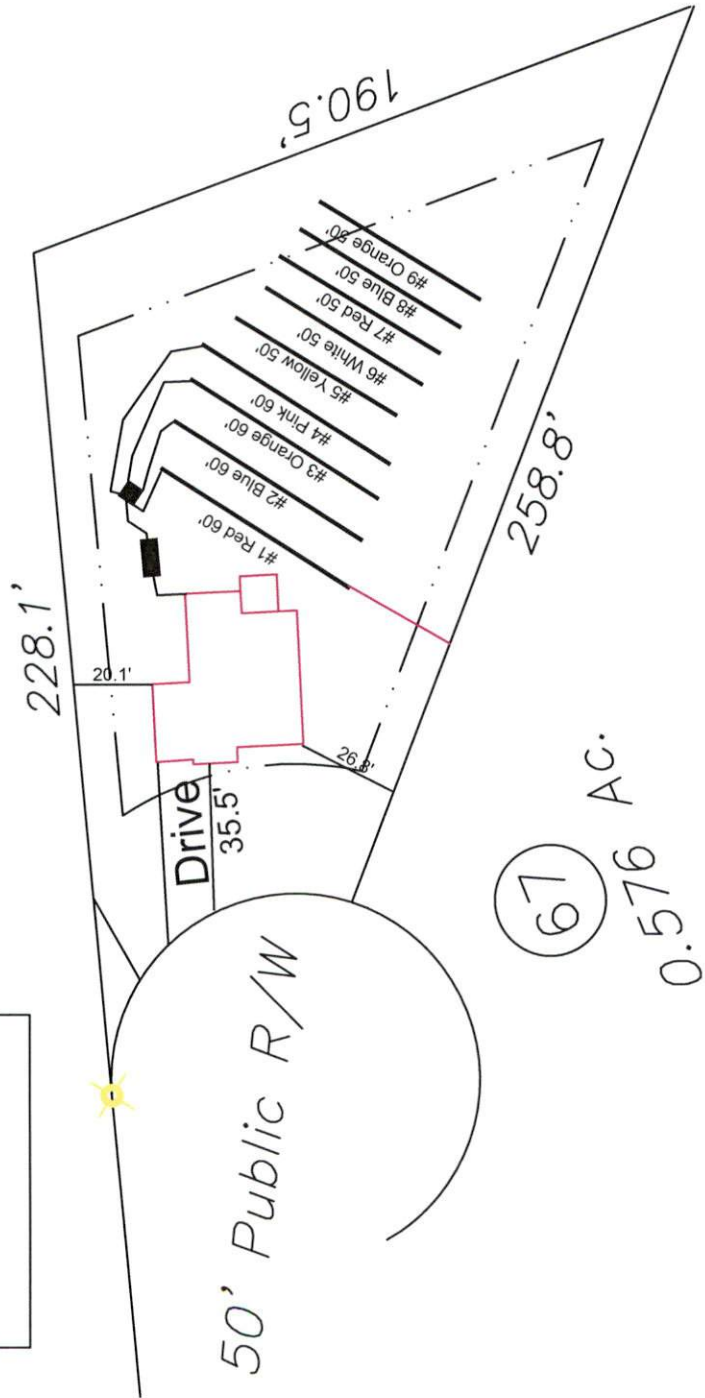
Lot #67

3-Bedroom Home (360 gal./day)

<u>LINE #</u>	<u>COLOR</u>	<u>BS</u>	<u>HI</u>	<u>FS</u>	<u>ELEVATION</u>	<u>LINE LENGTH</u>	<u>Design Length</u>
TBM		2.0		100.0		<u>in field</u>	<u>installation</u>
INST. 1			102.0				
1	Red			2.3	99.7	70	60
2	Blue			3	99	65	60
3	Orange			3.6	98.4	60	60
4	Pink			4.2	97.8	60	60
5	Yellow			4.6	97.4	68	50
6	White			5.3	96.7	50	50
7	Red			5.6	96.4	50	50
8	Blue			6	96	50	50
9	Orange			6.4	95.6	50	50
Total						523	490

	<u>System</u>	<u>Repair</u>
	Lines 1-4	Lines 5-9
<b>System Type</b>	Accepted Status System EZ-FLOW	Accepted Status System EZ-FLOW
Suggested Soil LTAR	0.40	0.40
<b>Total Line Length</b>	240	250
<b>Square Footage</b>	720	750
<b>Proposed Trench Bottom</b>	18-24"	18-24"
<b>Distribution Method</b>	Gravity to D-Box	Gravity to D-Box

# Crosslink Subdivision Lot #67 3-Bedroom Septic System Design



System: Gravity to D-Box  
 Lines: 1-4, (240')  
 0.4 LTAR  
 18" Trench Bottom  
 Accepted Status System  
 Repair: Gravity to D-Box  
 Lines: 5-9, (250')  
 0.4 LTAR  
 18" Trench Bottom  
 Accepted Status System

GRAPHIC SCALE  
 1" = 50'



Adams  
 Soil Consulting  
 919-414-6761  
 Job #522

**Crosslink Subdivison Phase III**

Lot #67

3-Bedroom Home (360 gal./day)

<u>LINE #</u>	<u>COLOR</u>	<u>BS</u>	<u>HI</u>	<u>FS</u>	<u>ELEVATION</u>	<u>LINE LENGTH</u>	<u>Design Length</u>
TBM		2.0		100.0		<u>in field</u>	<u>installation</u>
INST. 1			102.0				
1	Red			2.3	99.7	70	60
2	Blue			3	99	65	60
3	Orange			3.6	98.4	60	60
4	Pink			4.2	97.8	60	60
5	Yellow			4.6	97.4	68	50
6	White			5.3	96.7	50	50
7	Red			5.6	96.4	50	50
8	Blue			6	96	50	50
9	Orange			6.4	95.6	50	50
Total						523	490

	<u>System</u>	<u>Repair</u>
	Lines 1-4	Lines 5-9
<b>System Type</b>	Accepted Status System EZ-FLOW	Accepted Status System EZ-FLOW
Suggested Soil LTAR	0.40	0.40
<b>Total Line Length</b>	240	250
<b>Square Footage</b>	720	750
<b>Proposed Trench Bottom</b>	18-24"	18-24"
<b>Distribution Method</b>	Gravity to D-Box	Gravity to D-Box