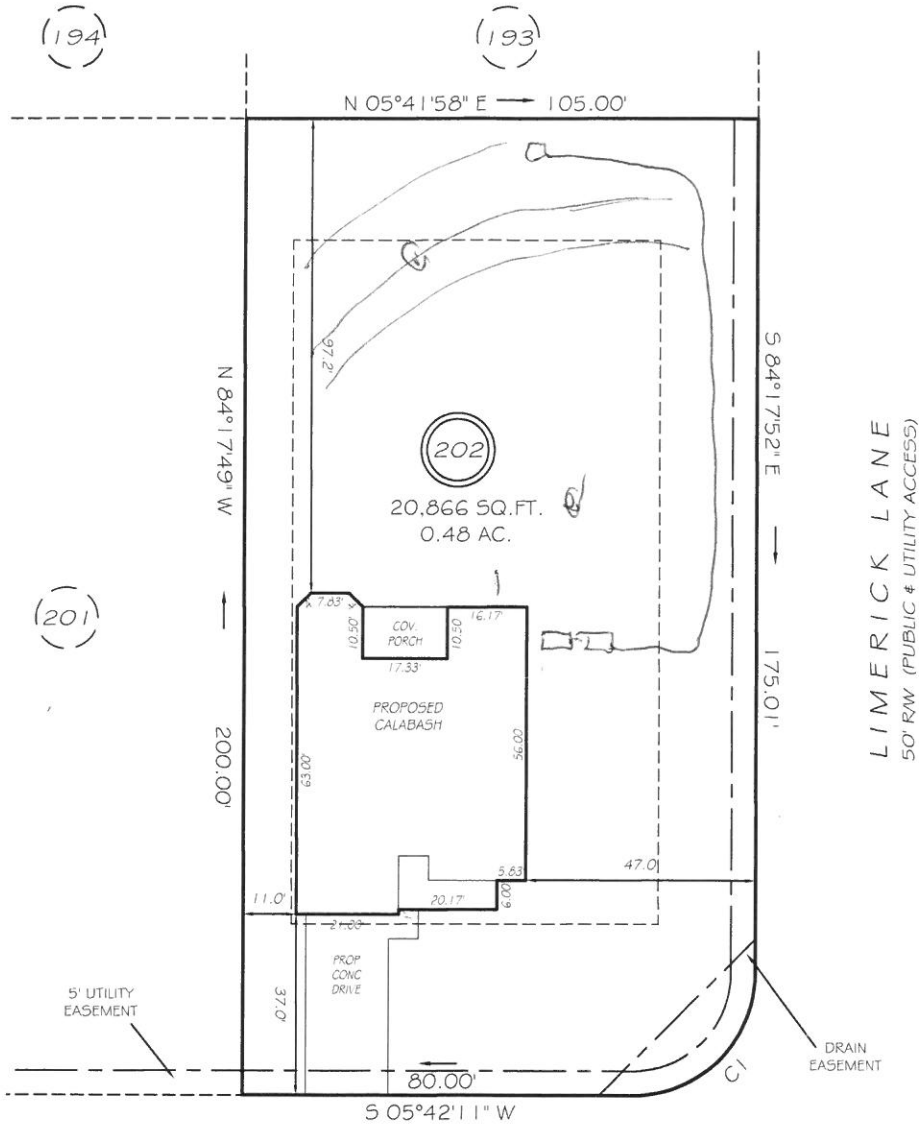


I, MICHAEL P. GRIFFIN, certify that under my direction and supervision this map was drawn from an actual field survey; that the error of closure of the survey as calculated by coordinates is 1: 10,000+; that the area shown hereon was calculated by coordinates.
 Witness my hand and seal this day of MONTH 2019.

BK 2017 PG 392-395
 HARNETT CO. REGISTRY



HOPELAND DRIVE
 50' RW (PUBLIC & UTILITY ACCESS)

SETBACKS
 FRONT 35'
 REAR 25'
 SIDE 10'

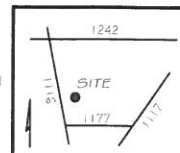
REVISION: MOVED LEFT 5/13/19

CI R=25.00' L=39.27' N39°17'49"W 35.36'

PRELIMINARY
 NOT FOR RECORDATION,
 SALES OR CONVEYANCE

LEGEND

EIP	EXISTING IRON PIPE	FES	FLARED END SECTION
IPS	IRON PIPE SET	WM	WATER METER
RW	RIGHT OF WAY	CO	CLEAN OUT
N/F	NOW OR FORMERLY	FH	FIRE HYDRANT
EIS	EXISTING IRON STAKE	CB	CATCH BASIN



GRIFFIN LAND SURVEYING, INC.

P.O. BOX 148
 FUQUAY-VARINA, NC 27526
 (919) - 567-1963

PLOT PLAN
 FOR
H & H HOMES

OAKMONT
LOT 202
 HOPELAND DRIVE
 NORTH CAROLINA
 HARNETT COUNTY BARBECUE TOWNSHIP

DRAWN BY NMF

DATE 5/2/19

CHECKED BY MPG

SCALE 1" = 30'