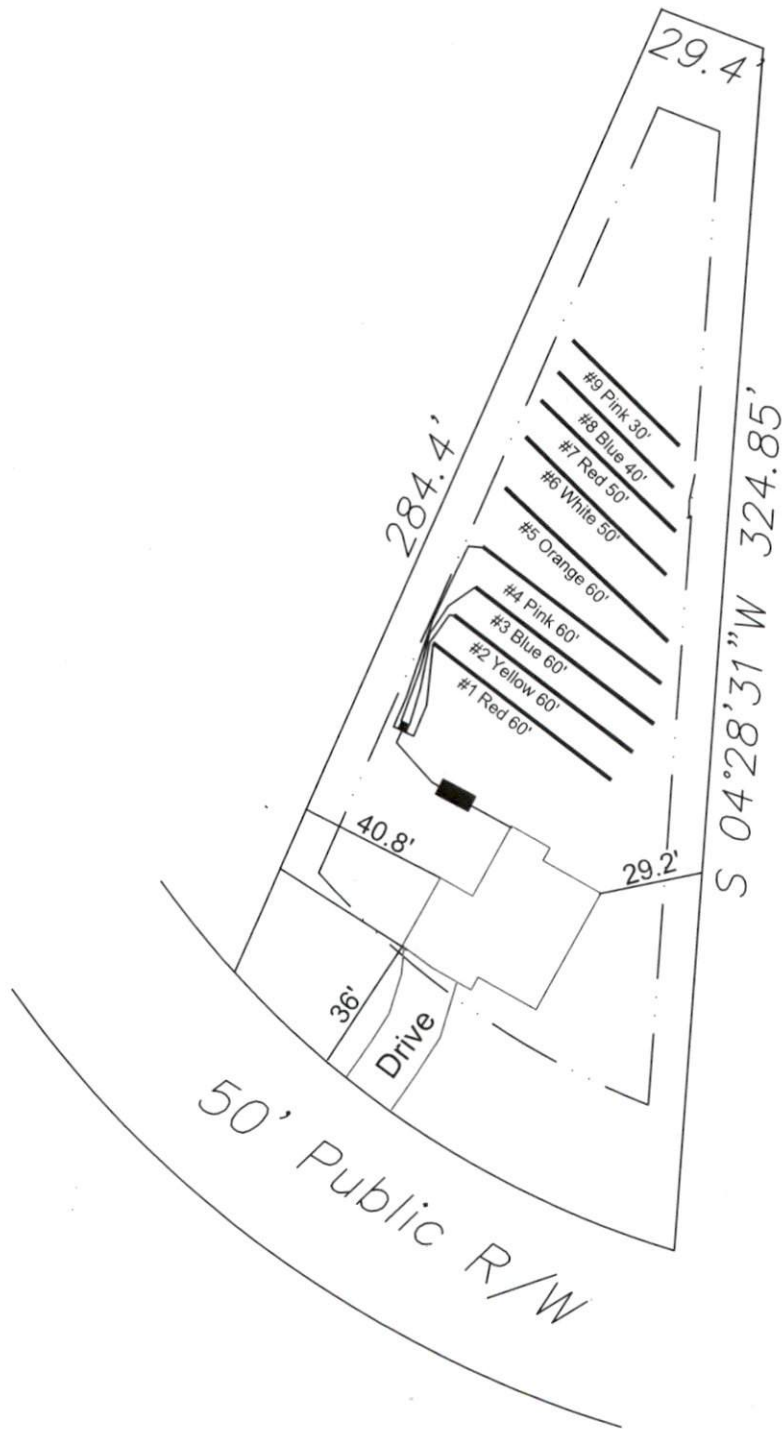


# Crosslink Subdivision True Homes - Lot #68 3-Bedroom Septic System Proposal



68

0.580 Ac.

System: Gravity to D-Box  
 Lines: 1-4 (240')  
 0.4 LTAR  
 24" Trench Bottom  
 Accepted Status System  
 Repair: Gravity to serial distribution  
 Lines: 5-9 (230')  
 0.4 LTAR  
 18" Trench Bottom  
 Accepted Status System

GRAPHIC SCALE  
1" = 50'



Adams  
Soil Consulting  
919-414-6761  
Job #522

**Crosslink Subdivison Phase III**

True Homes - Lot #68

3-Bedroom Home (360 gal./day)

<u>LINE #</u>	<u>COLOR</u>	<u>BS</u>	<u>HI</u>	<u>FS</u>	<u>ELEVATION</u>	<u>LINE LENGTH</u>	<u>Design Length</u>
TBM		2.0		100.0		<u>in field</u>	<u>installation</u>
INST. 1			102.0				
1	Red			3.6	98.4	75	60
2	Yellow			4	98	73	60
3	Blue			4.3	97.7	70	60
4	Pink			4.6	97.4	65	60
5	Orange			5	97	60	60
6	White			5.6	96.4	60	50
7	Red			6.2	95.8	55	50
8	Blue			6.9	95.1	45	40
9	Pink			7.5	94.5	40	30
Total						543	470

	<u>System</u> Lines 1-4	<u>Repair</u> Lines 5-9
<b>System Type</b>	Accepted Status System EZ-FLOW	Accepted Status System EZ-FLOW
Suggested Soil LTAR	0.40	0.40
<b>Total Line Length</b>	240	230
<b>Square Footage</b>	720	690
<b>Proposed Trench Bottom</b>	18"	18"
<b>Distribution Method</b>	Gravity to D-Box	Gravity to serial distribution