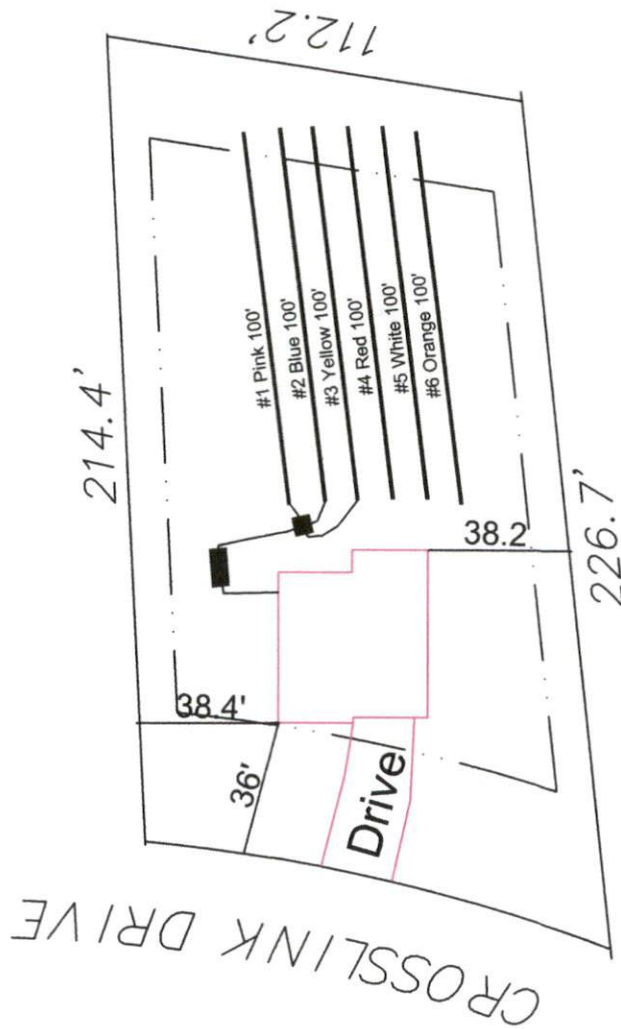


Crosslink Subdivision True Homes - Lot #59

4-Bedroom Septic System Design



System: Gravity to D-Box
Lines: 1-3 (300')
0.4 LTAR
24" Trench Bottom
Accepted Status System
Repair: Gravity to D-Box
Lines: 4-6 (300')
0.4 LTAR
24" Trench Bottom
Accepted Status System

GRAPHIC SCALE
1" = 50'



Adams
Soil Consulting
919-414-6761
Job #522

Crosslink Subdivison Phase III

True Homes - Lot #59

4-Bedroom Home (480 gal./day)

<u>LINE #</u>	<u>COLOR</u>	<u>BS</u>	<u>HI</u>	<u>FS</u>	<u>ELEVATION</u>	<u>LINE LENGTH</u>	<u>Design Length</u>
TBM		2.0		100.0		<u>in field</u>	<u>installation</u>
INST. 1			102.0				
1	Pink			2.9	99.1	100	100
2	Blue			3.2	98.8	100	100
3	Yellow			3.4	98.6	100	100
4	Red			3.7	98.3	100	100
5	White			4.1	97.9	100	100
6	Orange			4.9	97.1	100	100
Total						600	600

	<u>System</u> Lines 1-3	<u>Repair</u> Lines 4-6
System Type	Accepted Status System EZ-FLOW	Accepted Status System EZ-FLOW
Suggested Soil LTAR	0.40	0.40
Total Line Length	400	200
Square Footage	1200	600
Proposed Trench Bottom	18-24"	18-24"
Distribution Method	Gravity to D-Box	Gravity to D-Box