

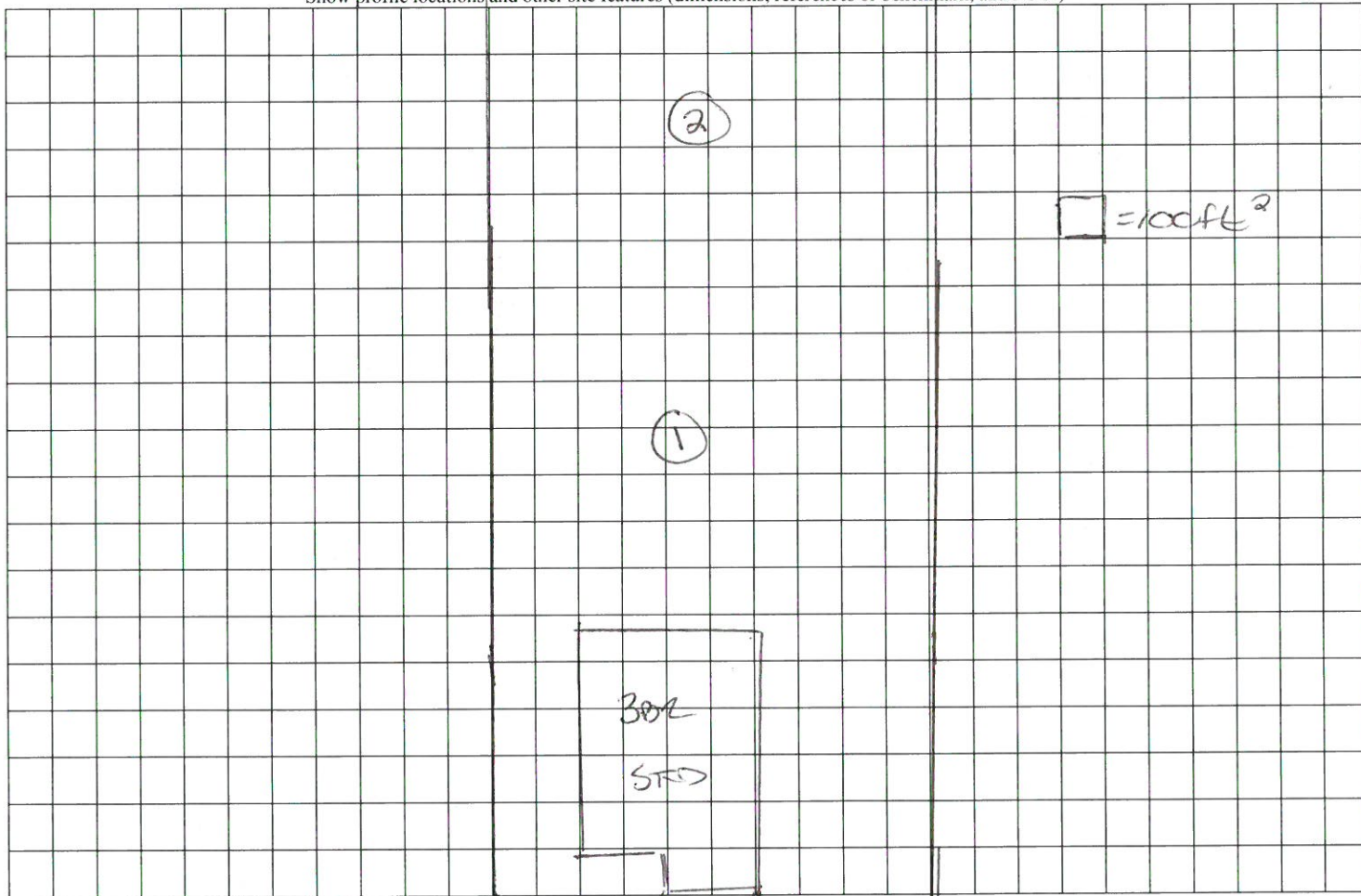
COMMENTS: _____

| LANDSCAPE POSITIONS | GROUP | TEXTURES | .1955 LTAR | CONSISTENCE MOIST | WET |
|---------------------|-------|---------------------|------------|--|--|
| R-RIDGE | I | S-SAND | 1.2 - 0.8 | VFR-VERY FRIABLE FR-FRIABLE | NS-NON-STICKY SS-SLIGHTLY STICKY |
| S-SHOULDER SLOPE | | LS-LOAMY SAND | | | |
| L-LINEAR SLOPE | II | SL-SANDY LOAM | 0.8 - 0.6 | FI-FIRM VFI-VERY FIRM EFI-EXTREMELY FIRM | S-STICKY VS-VERY STICKY NP-NON-PLASTIC SP-SLIGHTLY STICKY |
| FS-FOOT SLOPE | | L-LOAM | | | |
| N-NOSE SLOPE | III | SI-SILT | 0.6 - 0.3 | | P-PLASTIC VP-VERY PLASTIC |
| H-HEAD SLOPE | | SIL-SILT LOAM | | | |
| CC-CONCLAVE SLOPE | | CL-CLAY LOAM | | | |
| CV-CONVEX SLOPE | | SCL-SANDY CLAY LOAM | | | |
| T-TERRACE | IV | SIC-SILTY CLAY | 0.4 - 0.1 | | |
| FP-FLOOD PLAN | | C-CLAY | | | |
| | | SC-SANDY CLAY | | | |

STRUCTURE
 SG-SINGLE GRAIN
 M- MASSIVE
 CR-CRUMB
 GR-GRANULAR
 SBK-SUBANGULAR BLOCKY
 ABK-ANGULAR BLOCKY
 PL-PLATY
 PR-PRISMATIC

MINERALOGY
 SLIGHTLY EXPANSIVE
 EXPANSIVE

Show profile locations and other site features (dimensions, references or benchmark, and North)



30L

5FD

9W

= 100 ft²

2

1