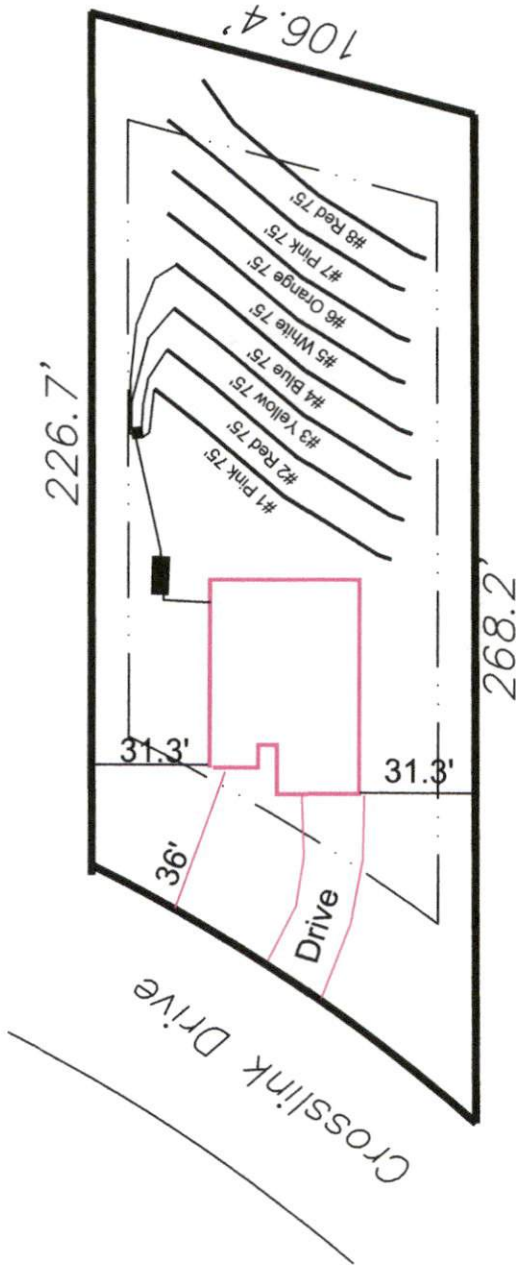


Crosslink Subdivision True Homes - Lot #58 4-Bedroom Septic System Design



58

0.576 Ac.

System: Gravity to D-Box
 Lines: 1-4 (300')
 0.4 LTAR
 24" Trench Bottom
 Accepted Status System
 Repair: Gravity to D-Box
 Lines: 5-8 (300')
 0.4 LTAR
 24" Trench Bottom
 Accepted Status System

GRAPHIC SCALE
1" = 50'



Adams
 Soil Consulting
 919-414-6761
 Job #522

Crosslink Subdivison Phase III

True Homes - Lot #58

4-Bedroom Home (480 gal./day)

<u>LINE #</u>	<u>COLOR</u>	<u>BS</u>	<u>HI</u>	<u>FS</u>	<u>ELEVATION</u>	<u>LINE LENGTH</u>	<u>Design Length</u>
TBM		2.0		100.0		<u>in field</u>	<u>installation</u>
INST. 1			102.0				
1	Pink			3.8	98.2	80	75
2	Red			3.9	98.1	80	75
3	Yellow			4.1	97.9	80	75
4	Blue			4.3	97.7	80	75
5	White			4.6	97.4	80	75
6	Orange			5	97	80	75
7	Pink			5.5	96.5	80	75
8	Red			6	96	80	75
Total						640	600

	<u>System</u>	<u>Repair</u>
	Lines 1-4	Lines 5-8
System Type	Accepted Status System EZ-FLOW	Accepted Status System EZ-FLOW
Suggested Soil LTAR	0.40	0.40
Total Line Length	300	300
Square Footage	900	900
Proposed Trench Bottom	18"	18"
Distribution Method	Gravity to D-Box	Gravity to D-Box