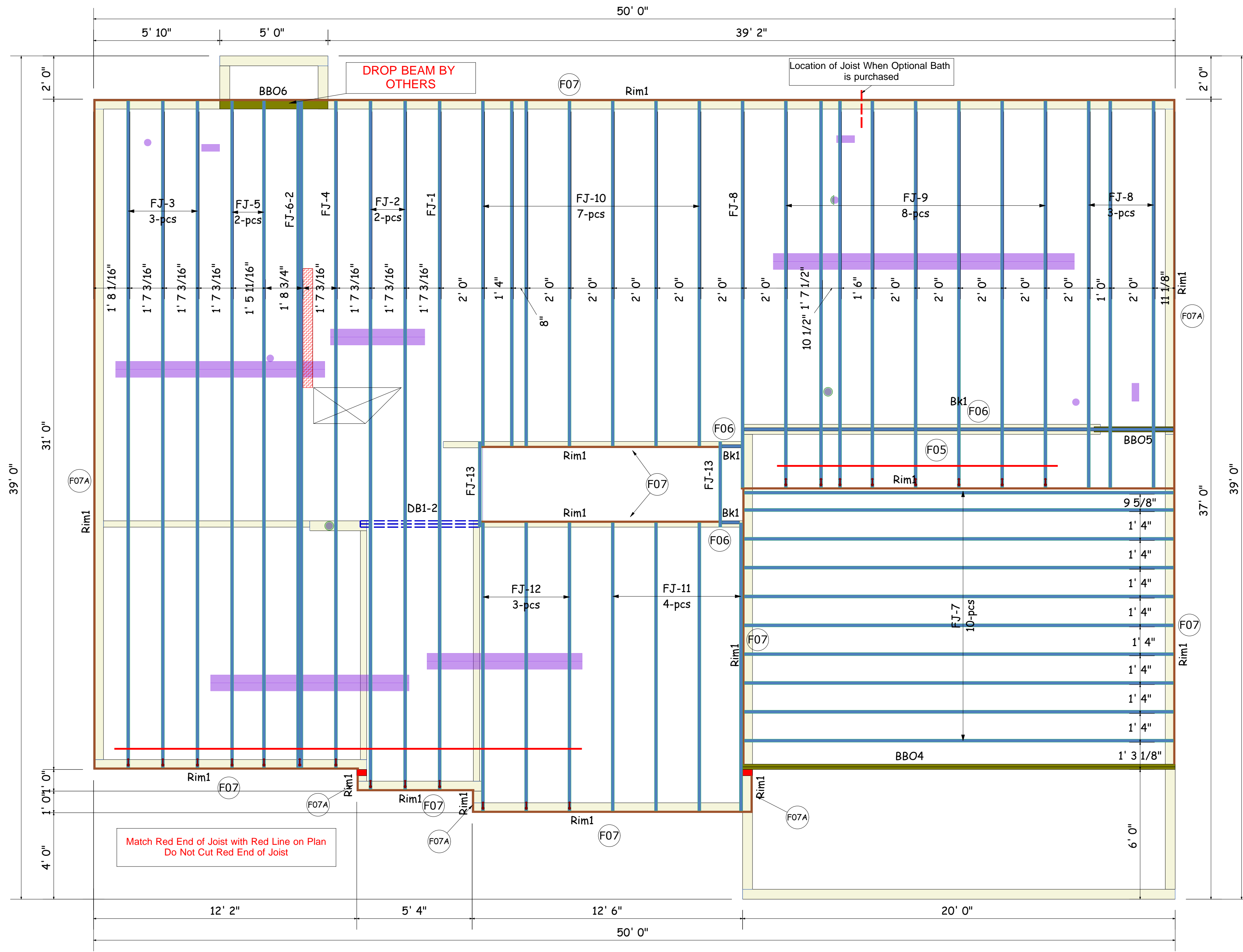


www.bldr.com
 1135 ROBESON STREET
 FAYETTEVILLE, NC 28305
 V (910) 485-1111
 7601 BOEING DRIVE
 GREENSBORO, NC 27409
 V (336) 884-5454
 3189 NC HIGHWAY 5
 ABERDEEN NC 28315
 V (910) 944-2516

This layout and associated materials list has been prepared based on project plans and/or information provided to Builders FirstSource (BFS). It remains the responsibility of the builder, architect, designer, or other responsible persons to review this information to assure that it is appropriate, accurate, complete and complies with applicable building codes.

- GENERAL NOTES:**
- 1.) READ THE INSTALLATION GUIDE BEFORE FRAMING.
 - 2.) ALL WALLS SHOWN ARE LOAD BEARING UNLESS NOTED OTHERWISE. WALLS NOT SHOWN ARE CONSIDERED NON-LOAD BEARING.
 - 3.) UNLESS STATED OTHERWISE ALL CEILING & ROOF LOADS BRACE DIRECTLY TO LOAD BEARING WALLS SUPPORTED BY FOUNDATION.
 - 4.) CONTACT BUILDERS FIRSTSOURCE BEFORE MAKING ANY ALTERATIONS OR ADJUSTMENTS...FAILURE TO DO SO MAY RESULT IN COSTLY REPAIRS.



Products				
PlotID	Length	Product	Plies	Net Qty
FJ-1	31' 10"	14" BCI@ 4500s-1.8	1	1
FJ-2	31' 10"	14" BCI@ 4500s-1.8	1	2
FJ-3	30' 10"	14" BCI@ 4500s-1.8	1	3
FJ-4	30' 10"	14" BCI@ 4500s-1.8	1	1
FJ-5	30' 10"	14" BCI@ 4500s-1.8	1	2
FJ-6-2	30' 10"	14" BCI@ 4500s-1.8	2	2
FJ-7	19' 10"	14" BCI@ 4500s-1.8	1	10
FJ-8	17' 10 1/2"	14" BCI@ 4500s-1.8	1	4
FJ-9	17' 10 1/2"	14" BCI@ 4500s-1.8	1	8
FJ-10	15' 11 1/2"	14" BCI@ 4500s-1.8	1	7
FJ-11	13' 4"	14" BCI@ 4500s-1.8	1	4
FJ-12	13' 4"	14" BCI@ 4500s-1.8	1	3
FJ-13	3' 11 1/2"	14" BCI@ 4500s-1.8	1	2
DB1-2	6' 0"	1-3/4" x 9-1/4" VERSA-LAM® 2.0 3100 SP	2	2
Rim1	12' 0"	1" x 14" BC RIM BOARD OSB	1	17
Bk1	20' 0"	14" BCI@ 4500s-1.8	1	1

WILMINGTON - 2865
 SEAL DATE 9-26-17
 2nd FLOOR EWP PLACEMENT PLAN

H & H HOMES
 WILMINGTON 2865 - MPS-005
 2nd FLOOR EWP PLACEMENT PLAN
 Builders FirstSource, Central Carolina Markets
 DRAWN BY: CORY D DRIETZ DATE: 13JAN17
 SCALE: NOT TO SCALE JOB NUMBER:

MINIMUM DESIGN DATA
 LIVE LOAD 40 PSF
 DEAD LOAD 10 PSF
 TOTAL LOAD 50 PSF
 DOL = 100%
 DEFLECTION CRITERIA
 L/480 (MINIMUM)
 ARCHITECTURAL PLAN DATE
 9-14-17
 SEALED PLAN DATE
 9-26-17

