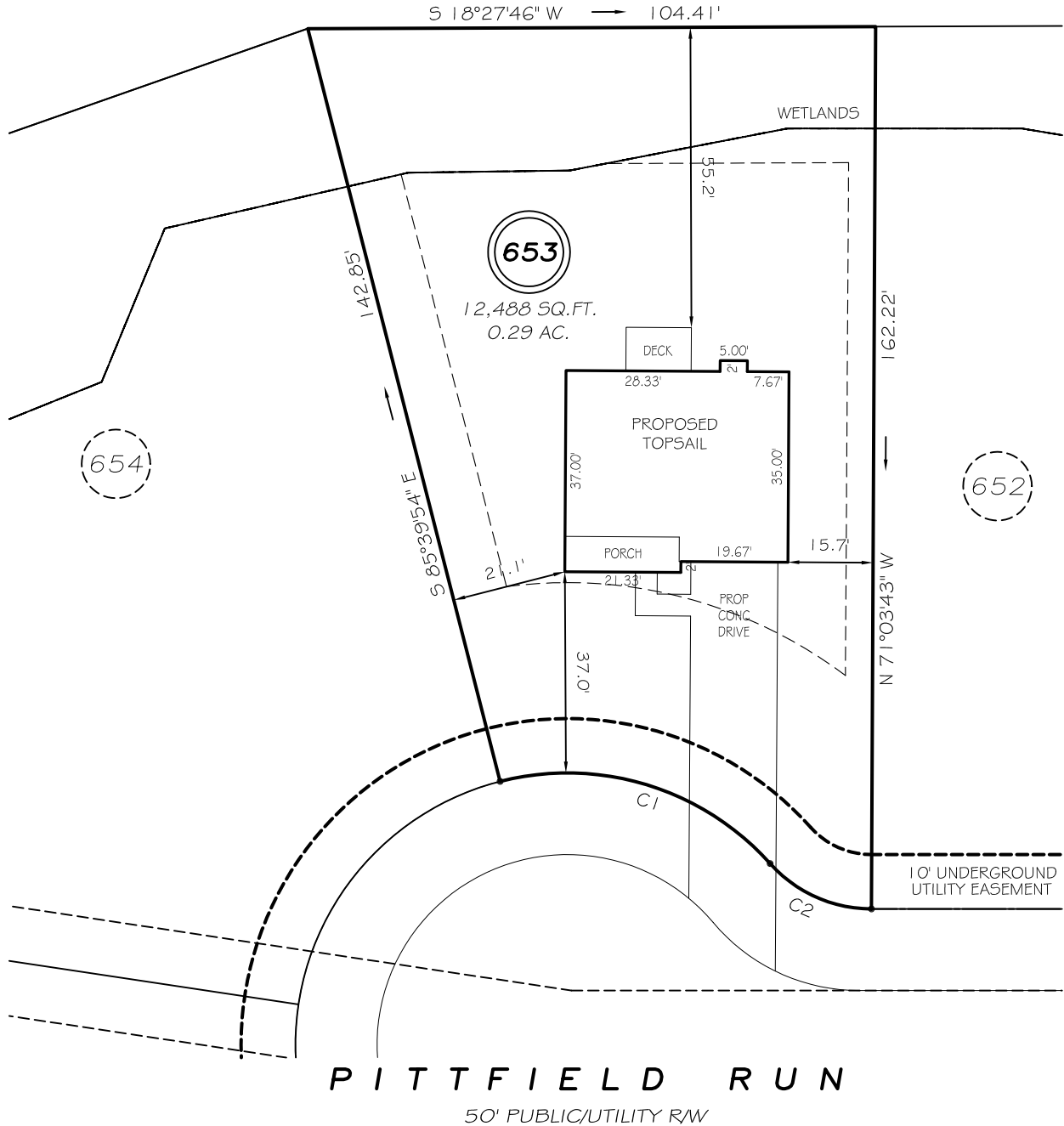


I, MICHAEL P. GRIFFIN, certify that under my direction and supervision this map was drawn from an actual field survey; that the error of closure of the survey as calculated by coordinates is 1: 10,000+; that the area shown hereon was calculated by coordinates.

Witness my hand and seal this day of MONTH 2019.

Z MAP 2017 PGS 98-99
HARNETT CO. REGISTRY

LEXINGTON PLANTATION HOLDINGS
FIN 9595-42-8914.000
DB 2871 PG 434



SETBACKS

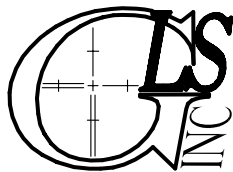
FRONT	35'
REAR	25'
SIDE (ONE SIDE)	5'
SIDE (ONE SIDE)	10'
CORNER SIDE	20'

C1 R=54.56' L=50.00' N35°35'43"E 51.89'
C2 R=25.00' L=21.03' S42°45'38"W 20.41'

LEGEND

EIP	EXISTING IRON PIPE	FES	FLARED END SECTION
IPS	IRON PIPE SET	WM	WATER METER
R/W	RIGHT OF WAY	CO	CLEAN OUT
N/F	NOW OR FORMERLY	FH	FIRE HYDRANT
EIS	EXISTING IRON STAKE	CB	CATCH BASIN

P R E L I M I N A R Y
NOT FOR RECORDATION,
SALES OR CONVEYANCE



GRIFFIN LAND SURVEYING, INC.

P.O. BOX 148
FUQUAY-VARINA, NC 27526
(919) - 567-1963

PLOT PLAN
FOR

H & H HOMES

LEXINGTON PLANTATION

LOT 653

PITTFIELD RUN

NORTH CAROLINA

HARNETT COUNTY ANDERSON CREEK TOWNSHIP

DRAWN BY NMF

DATE 2/15/19

CHECKED BY MPG

SCALE 1" = 30'