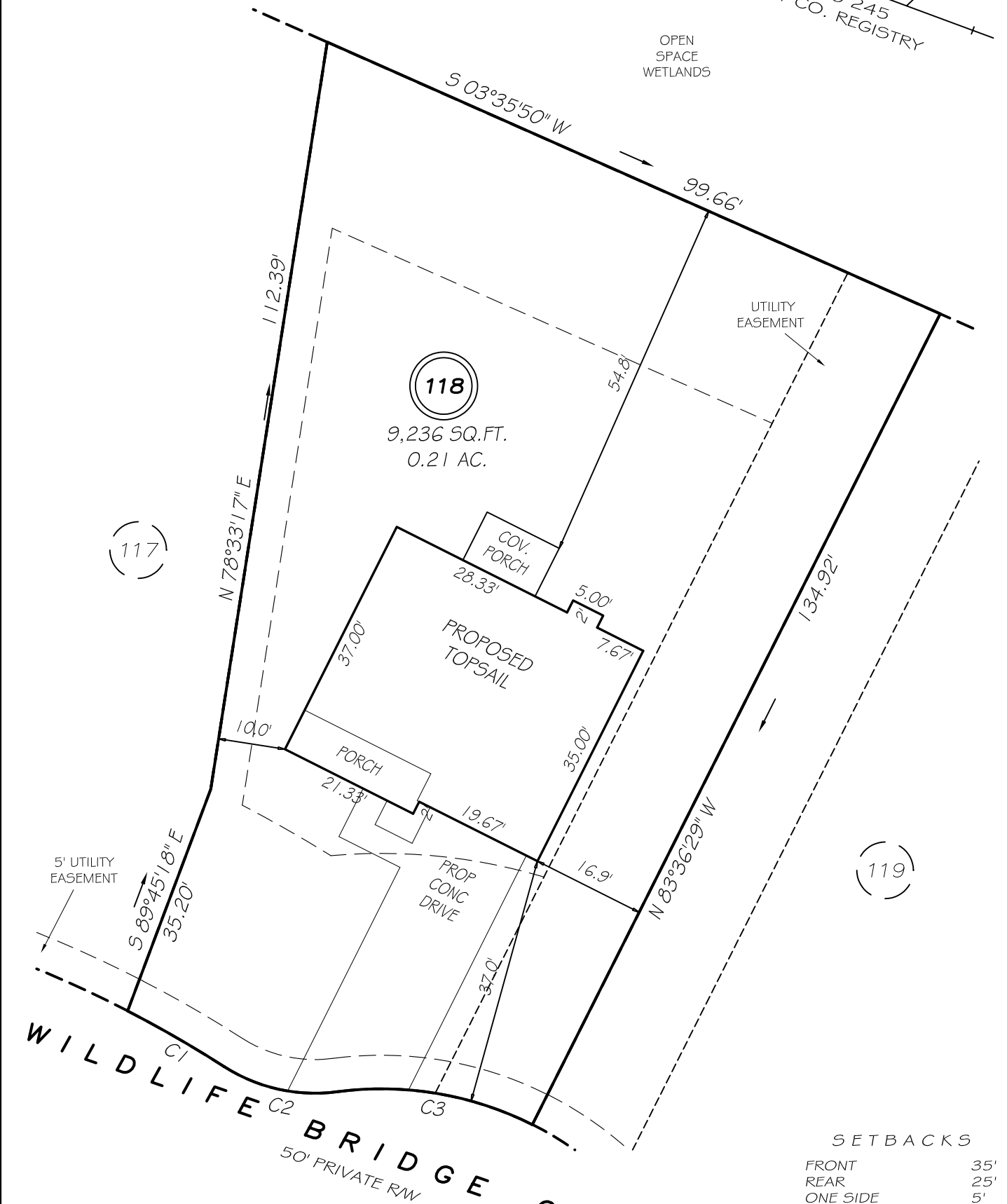


I, MICHAEL P. GRIFFIN, certify that under my direction and supervision this map was drawn from an actual field survey; that the error of closure of the survey as calculated by coordinates is 1: 10,000+; that the area shown hereon was calculated by coordinates.

Witness my hand and seal this day of MONTH 2019.

MAP 2017 PG 245
HARNETT CO. REGISTRY

OPEN SPACE WETLANDS



C1 R=175.00' L=16.56' N09°40'24"E 16.55'
C2 R=25.00' L=17.56' S07°45'15"E 17.20'
C3 R=50.00' L=29.88' N10°44'54"W 29.44'

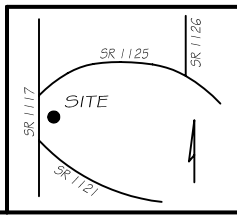
SETBACKS

FRONT	35'
REAR	25'
ONE SIDE	5'
OTHER SIDE	10'

LEGEND

PRELIMINARY
NOT FOR RECORDATION,
SALES OR CONVEYANCE

EIP	EXISTING IRON PIPE	FES	FLARED END SECTION
IPS	IRON PIPE SET	WM	WATER METER
R/W	RIGHT OF WAY	CO	CLEAN OUT
N/F	NOW OR FORMERLY	FH	FIRE HYDRANT
EIS	EXISTING IRON STAKE	CB	CATCH BASIN



GLS GRIFFIN LAND SURVEYING, INC.
P.O. BOX 148
FUQUAY-VARINA, NC 27526
(919) - 567-1963

PLOT PLAN
FOR
H & H HOMES
ANDERSON CREEK CLUB
LOT 118
WILDLIFE BRIDGE COURT
NORTH CAROLINA
HARNETT COUNTY ANDERSON CREEK TOWNSHIP

DRAWN BY NMF

DATE 2/12/19

CHECKED BY MPG

SCALE 1" = 20'