

Avery Pond

Lot #50

3-Bedroom Home (360 gal./day)

<u>LINE #</u>	<u>COLOR</u>	<u>BS</u>	<u>HI</u>	<u>FS</u>	<u>ELEVATION</u>	<u>LINE LENGTH</u>	<u>Design Length</u>
TBM		2.0		100.0		<u>in field</u>	<u>installation</u>
INST. 1			102.0				
<i>1</i>	<i>Yellow</i>			<i>4.8</i>	<i>97.2</i>	<i>115</i>	<i>115</i>
<i>2</i>	<i>Blue</i>			<i>5.1</i>	<i>96.9</i>	<i>115</i>	<i>115</i>
<i>3</i>	<i>Pink</i>			<i>6.1</i>	<i>95.9</i>	<i>115</i>	<i>115</i>
<i>4</i>	<i>Red</i>			<i>7</i>	<i>95</i>	<i>115</i>	<i>115</i>

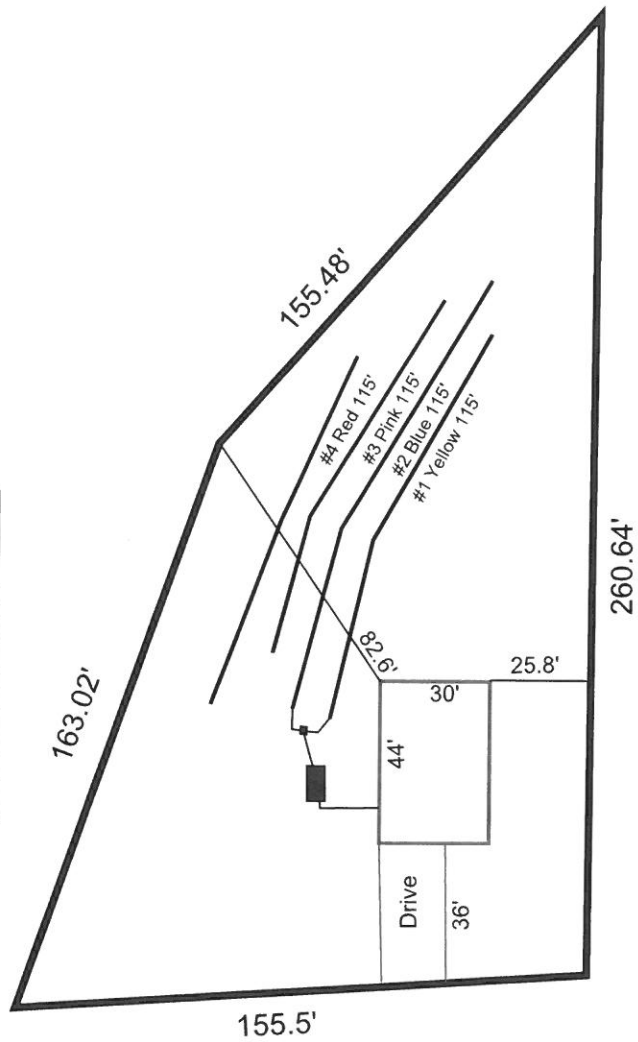
	<u>System</u>	<u>Repair</u>
	Lines 1-2	Lines 3-4
System Type	Accepted Status System EZ-FLOW	Accepted Status System EZ-FLOW
Suggested Soil LTAR	0.40	0.40
Total Line Length	230	230
Square Footage	690	690
Proposed Trench Bottom	18"	18"
Distribution Method	Gravity to D-Box	Gravity to D-Box

Avery Pond 3-Bedroom Septic Proposal Lot #50

50

0.573 AC.

System: Gravity to D-Box
Lines: 1-2 (230')
0.4 LTAR
18" Trench Bottom
Accepted Status System
Repair: Gravity to D-Box
Lines: 3-4 (230')
0.4 LTAR
18" Trench Bottom
Accepted Status System



Avery Pond Drive

GRAPHIC SCALE
1" = 50'



Adams
Soil Consulting
919-414-6761
Job #708