

- LEGEND**
- PO=PORCH
 - P=PATIO
 - SW=SIDEWALK
 - DW=CONC DRIVEWAY
 - EB=ELECTRIC BOX
 - SCO=CLEANOUT
 - TP=TELEPHONE PEDESTAL
 - WM=WATER METER
 - AC=AIR CONDITIONING UNIT
 - BOC=BACK OF CURB
 - EOP=EDGE OF PAVEMENT
 - IRON PIPE FOUND
 - IRON PIPE SET
 - NAIL SET



THIS SURVEY IS OF AN EXISTING PARCEL OR PARCELS OF LAND AND DOES NOT CREATE A NEW STREET OR CHANGE AN EXISTING STREET.

Shawn T. Rumberger 7-10-19
 SHAWN T. RUMBERGER, PLS L-4909 DATE

THIS MAP IS ONLY INTENDED FOR THE PARTIES AND PURPOSES SHOWN. THIS MAP IS NOT FOR RECORDATION. NO TITLE REPORT PROVIDED.

VICINITY MAP (NTS)



OPEN SPACE

N 05°24'54" W 115.56'

(173)

175

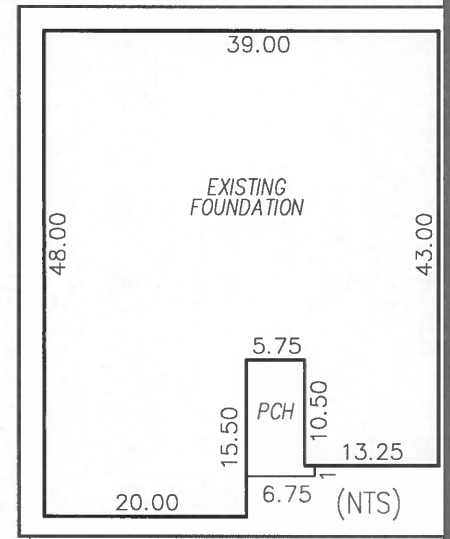
23,043 S.F.
0.529 AC.

115.5

20' DRAINAGE EASEMENT

N 84°35'06" E 200.00'

OPEN SPACE



(174)

S 84°25'23" W 200.00'

WETLANDS

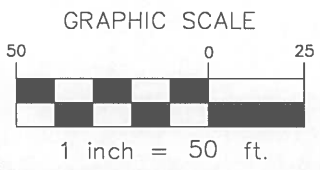
10' PUBLIC UTILITY EASEMENT

37.5

36.0

S 05°24'54" E 114.99'

AVERY POND DRIVE
50' PUBLIC & UTILITY R/W



SETBACKS

FRONT	35'
SIDE	10'
REAR	20'
SIDE STREET	20'

FOUNDATION SURVEY

ECLS	PROJECT:	18-003 AVERY POND
	DRAWN BY:	APS/JER
	SCALE:	1"=50'
	DATE:	7-8-19

FOR
LGI HOMES
 566 AVERY POND DRIVE
 LOT 175 AVERY POND SUBDIVISION; PHASE IIIA
 HECTOR'S CREEK TWP., HARNETT CO., NC
 P.B. 2018, PG. 382-384

ECLS GLOBAL, INC.
 U.S. VETERAN-OWNED
 19 N MCKINLEY ST
 COATS, NC 27521
 910.897.3257 ECLSGLOBALINC.COM
 910.897.2329 (FAX) CO#C-4175