

Avery Pond

Lot #47

3-Bedroom Home (360 gal./day)

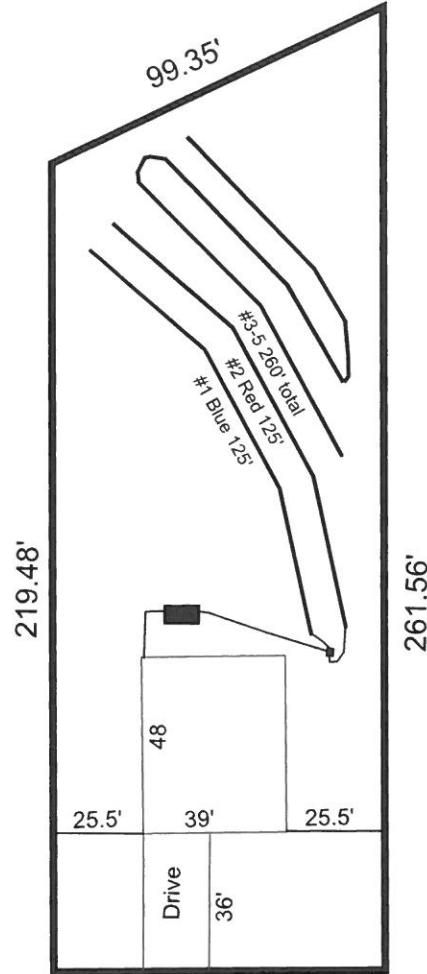
<u>LINE #</u>	<u>COLOR</u>	<u>BS</u>	<u>HI</u>	<u>FS</u>	<u>ELEVATION</u>	<u>LINE LENGTH</u>	<u>Design Length</u>
TBM		2.0		100.0		<u>in field</u>	<u>installation</u>
INST. 1			102.0				
<i>1</i>	<i>Blue</i>			<i>4.1</i>	<i>97.9</i>	<i>130</i>	<i>125</i>
<i>2</i>	<i>Red</i>			<i>4.8</i>	<i>97.2</i>	<i>125</i>	<i>125</i>
<i>3</i>	<i>White</i>			<i>5.6</i>	<i>96.4</i>	<i>95</i>	<i>95</i>
<i>4</i>	<i>Pink</i>			<i>6.4</i>	<i>95.6</i>	<i>80</i>	<i>80</i>
<i>5</i>	<i>Orange</i>			<i>7.3</i>	<i>94.7</i>	<i>65</i>	<i>65</i>

	<u>System</u>	<u>Repair</u>
	Lines 5-7	Lines 1-4
System Type	Accepted Status System EZ-FLOW	Accepted Status System EZ-FLOW
Suggested Soil LTAR	0.36	0.36
Total Line Length	250	260
Square Footage	750	780
Proposed Trench Bottom	18"	18"
Distribution Method	Gravity to D- Box	Serial Distribution

*For Repair tie lines 3-5 together (260')

Avery Pond 3-Bedroom Septic Proposal Lot #47

System: Gravity to D-Box
 Lines: 1-2 (250')
 0.36 LTAR
 24" Trench Bottom
 Accepted Status System
 Repair: Serial Distribution
 Lines: 3-5 (260')
 0.35 LTAR
 18-24" Trench Bottom
 Accepted Status System



47

0.789 AC.

Avery Pond Drive

GRAPHIC SCALE
1" = 50'



Adams
 Soil Consulting
 919-414-6761
 Job #708