

- LEGEND**
- PO=PORCH
 - P=PATIO
 - SW=SIDEWALK
 - DW=CONC DRIVEWAY
 - EB=ELECTRIC BOX
 - SCO=CLEANOUT
 - TP=TELEPHONE PEDESTAL
 - WM=WATER METER
 - AC=AIR CONDITIONING UNIT
 - BOC=BACK OF CURB
 - EOP=EDGE OF PAVEMENT
 - IRON PIPE FOUND
 - ⊙ IRON PIPE SET
 - NAIL SET

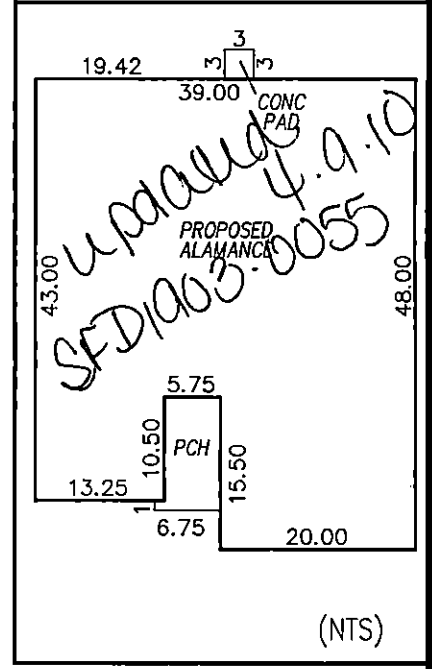
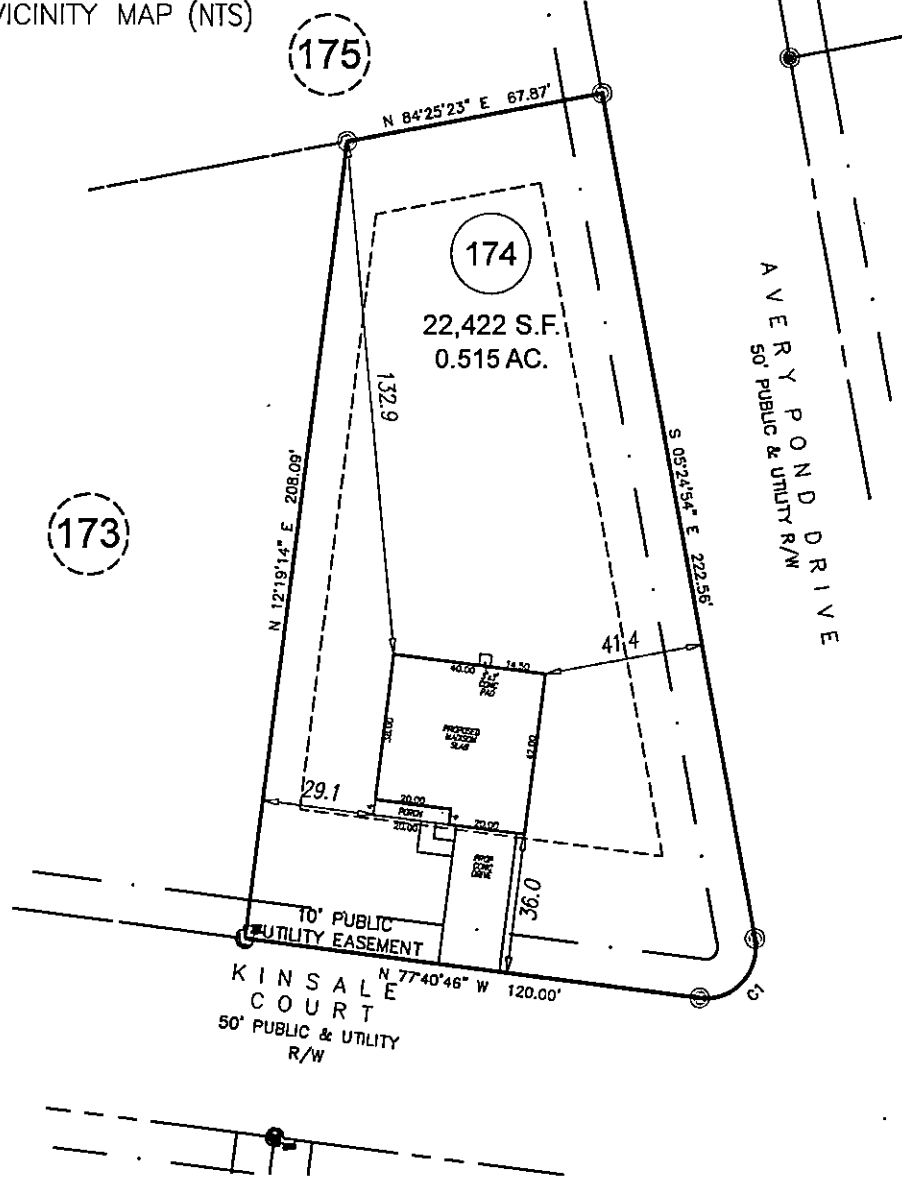
THIS SURVEY IS OF AN EXISTING PARCEL OR PARCELS OF LAND AND DOES NOT CREATE A NEW STREET OR CHANGE AN EXISTING STREET.

SHAWN T. RUMBERGER, PLS L-4909 DATE

THIS MAP IS ONLY INTENDED FOR THE PARTIES AND PURPOSES SHOWN. THIS MAP IS NOT FOR RECORDATION. NO TITLE REPORT PROVIDED.

VICINITY MAP (NTS)

REVISION: CHANGED HOUSE TO ALAMANCA PER REQUEST 3-21-19 AMW
REVISION: CHANGED HOUSE TO A MADISON PER REQUEST 4-2-19



173

175

174

22,422 S.F.
0.515 AC.

AVERY POND DRIVE
50' PUBLIC & UTILITY R/W

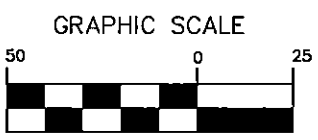
KINSALE COURT
50' PUBLIC & UTILITY R/W

SETBACKS

FRONT	35'
SIDE	10'
REAR	20'
SIDE STREET	20'

IMPERVIOUS AREA'

HOUSE	1,680 SQ.FT.
DRIVE	576 SQ.FT.
WALK	53 SQ.FT.
CONCRETE PAD	9 SQ.FT.
TOTAL	2,318 SQ.FT.
MAX. ALLOW	2,850 SQ.FT.



PRELIMINARY PLOT PLAN

CURVE	ARC LENGTH	RADIUS	CHORD BEARING	CHORD LENGTH
C1	24.44'	13.00'	IN 48°27'10" E	21.00'

PROJECT:	18-003 AVERY POND
DRAWN BY:	AMW
SCALE:	1"=50'
DATE:	02-25-19

FOR
LGI HOMES
KINSALE COURT
LOT 174 AVERY POND SUBDIVISION; PHASE IIIA
HECTOR'S CREEK TWP., HARNETT CO., NC
P.B. 2018, PG. 382-384

ECLS GLOBAL, INC.
U.S. VETERAN-OWNED
19 N MCKINLEY ST
COATS, NC 27521
910.897.3257 ECLSGLOBALINC.COM
910.897.2329 (FAX) CO#C-4175