

VICINITY MAP (NTS)

- LEGEND**
- PO=PORCH
 - P=PATIO
 - SW=SIDEWALK
 - DW=CONC DRIVEWAY
 - EB=ELECTRIC BOX
 - SCO=CLEANOUT
 - TP=TELEPHONE PEDESTAL
 - WM=WATER METER
 - AC=AIR CONDITIONING UNIT
 - BOC=BACK OF CURB
 - EOP=EDGE OF PAVEMENT

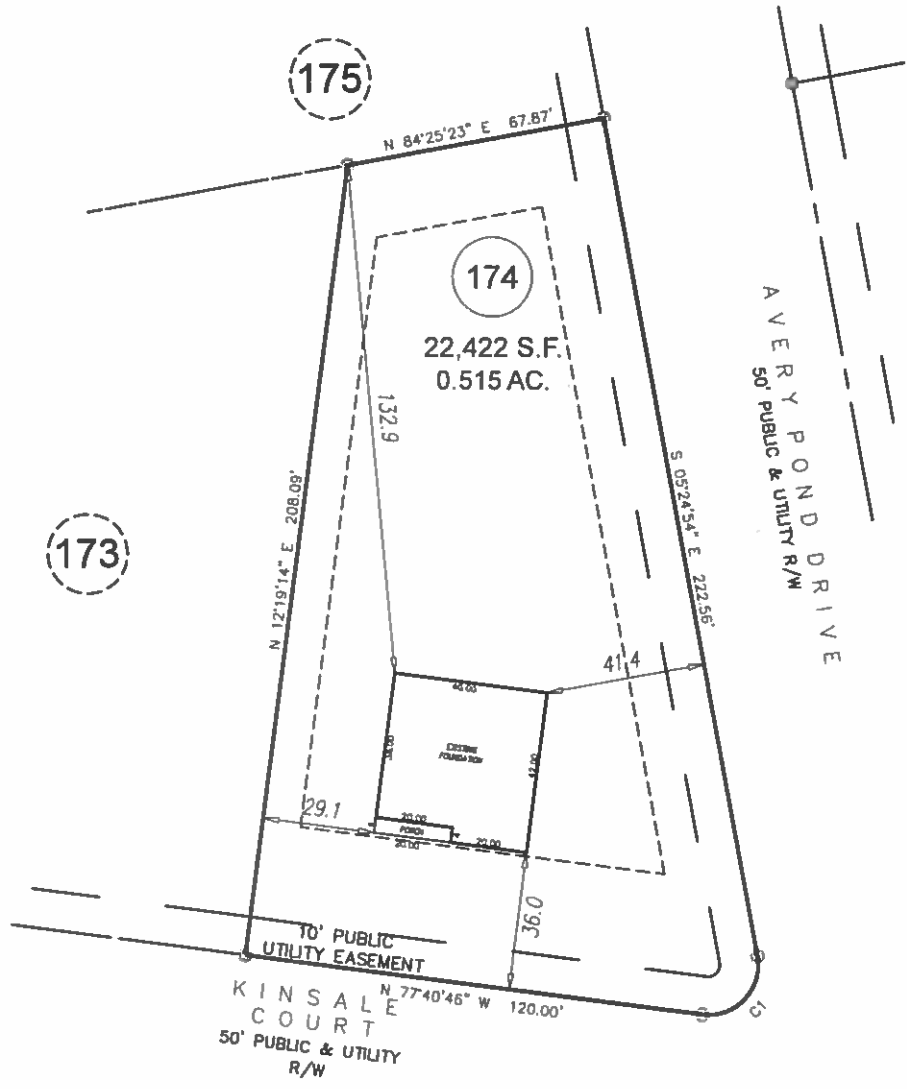
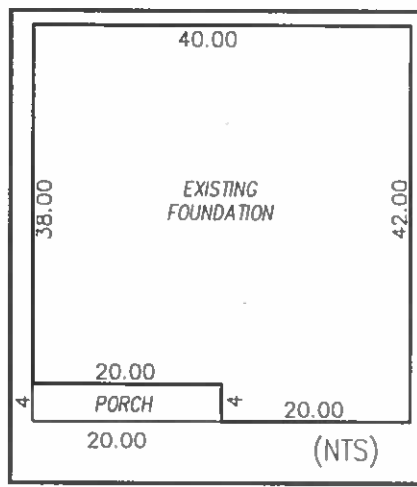
- IRON PIPE FOUND
- IRON PIPE SET
- NAIL SET



THIS SURVEY IS OF AN EXISTING PARCEL OR PARCELS OF LAND AND DOES NOT CREATE A NEW STREET OR CHANGE AN EXISTING STREET.

Shawn T. Rumberger 5-13-19
 SHAWN T. RUMBERGER, PLS L-4909 DATE

THIS MAP IS ONLY INTENDED FOR THE PARTIES AND PURPOSES SHOWN. THIS MAP IS NOT FOR RECORDATION. NO TITLE REPORT PROVIDED.



173

175

174

22,422 S.F.
0.515 AC.

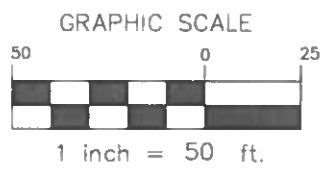
AVERY POND DRIVE
50' PUBLIC & UTILITY R/W

KINSALE COURT
50' PUBLIC & UTILITY R/W

10' PUBLIC UTILITY EASEMENT

SETBACKS

FRONT	35'
SIDE	10'
REAR	20'
SIDE STREET	20'



FOUNDATION SURVEY

CURVE	ARC LENGTH	RADIUS	CHORD BEARING	CHORD LENGTH
C1	24.44'	13.00'	S 48°27'10" W	21.00'

PLAT NORTH
PB 2018, PG 382-384

ECLS	PROJECT:	18-003 AVERY POND
	DRAWN BY:	AMW/JER
	SCALE:	1"=50'
	DATE:	06-13-19

FOR
LGI HOMES
 KINSALE COURT
 LOT 174 AVERY POND SUBDIVISION; PHASE III B
 HECTOR'S CREEK TWP., HARNETT CO., NC
 P.B. 2018, PG. 382-384

ECLS GLOBAL, INC.
 U.S. VETERAN-OWNED
 19 N MCKINLEY ST
 COATS, NC 27521
 910.897.3257 ECLSGLOBALINC.COM
 910.897.2329 (FAX) CO#G-4178