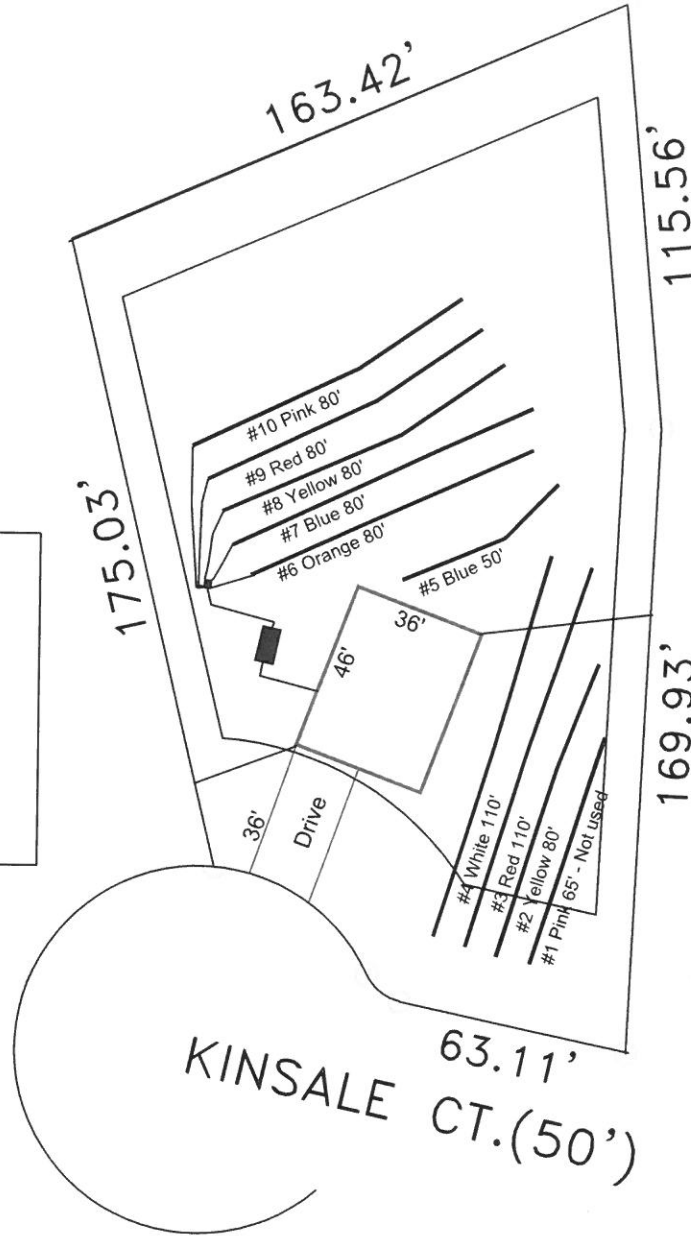


Avery Pond 4-Bedroom Septic Proposal Lot #172



172
0.732 AC.

System: Gravity to D-Box
 Lines: 6-10 (400')
 0.3 LTAR
 18-24" Trench Bottom
 Accepted Status System
 Repair: Pump to pressure manifold
 Lines: 1-5 (400')
 0.3 LTAR
 18-24" Trench Bottom
 Accepted Status System

GRAPHIC SCALE
 1" = 50'



Adams
 Soil Consulting
 919-414-6761
 Job #708