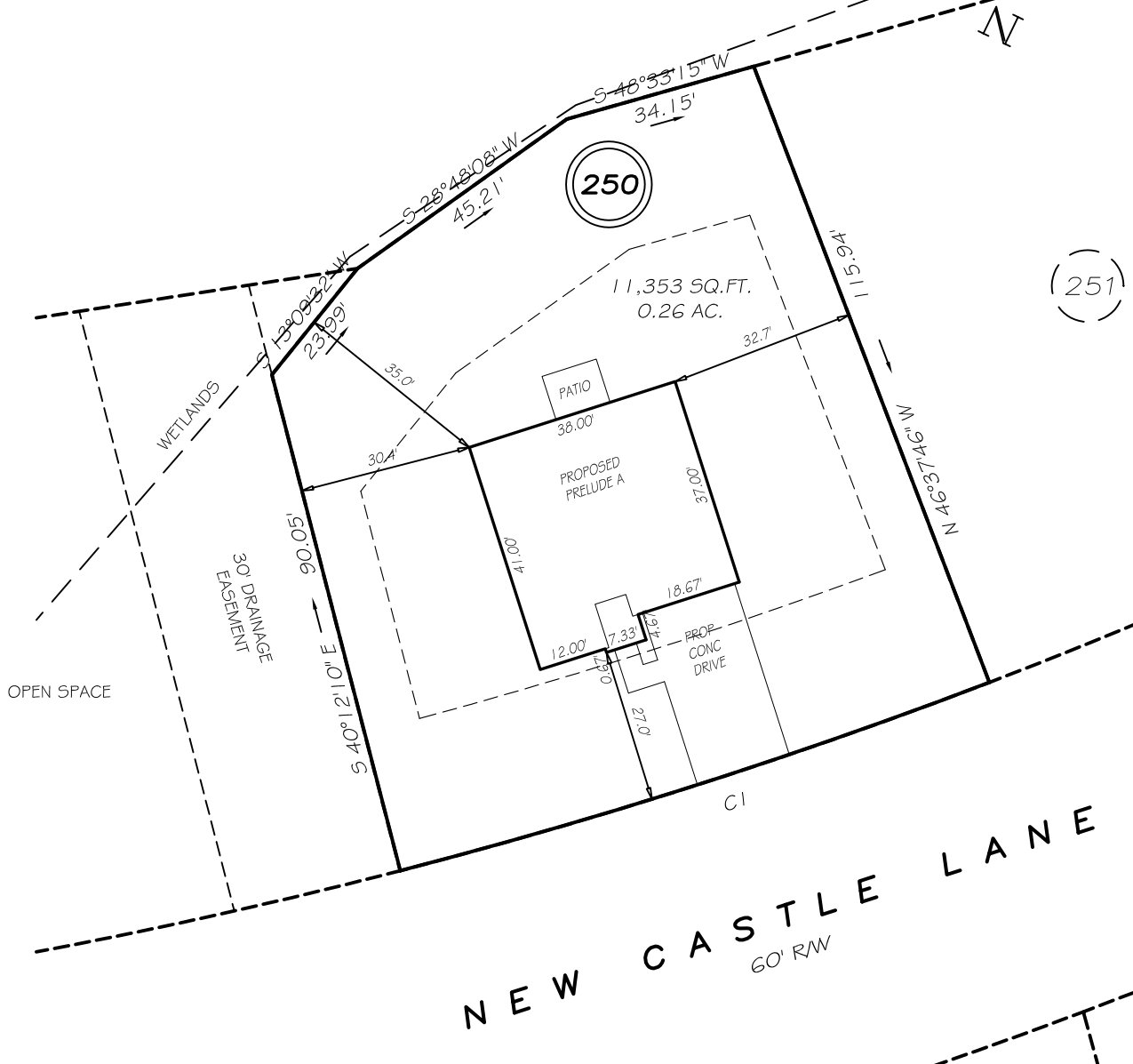


I, MICHAEL P. GRIFFIN, certify that under my direction and supervision this map was drawn from an actual field survey; that the error of closure of the survey as calculated by coordinates is 1: 10,000+; that the area shown hereon was calculated by coordinates.

Witness my hand and seal this day of MONTH 2008.

STAFFORD LAND
COMPANY, INC
DB 2950 PG 771

MAP 2012 PGS 379-380
HARNETT CO. REGISTRY



NEW CASTLE LANE
60' RW

SETBACKS

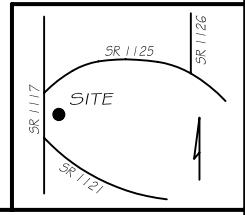
FRONT	20'
REAR	25'
SIDE	10'
CORNER SIDE	20'

CI R=970.00' L=108.80' S46°35'02"W 108.74'

P R E L I M I N A R Y
NOT FOR RECORDATION,
SALES OR CONVEYANCE

LEGEND

EIP	EXISTING IRON PIPE	FES	FLARED END SECTION
IPS	IRON PIPE SET	WM	WATER METER
RW	RIGHT OF WAY	CO	CLEAN OUT
N/F	NOW OR FORMERLY	FH	FIRE HYDRANT
EIS	EXISTING IRON STAKE	CB	CATCH BASIN



GRiffin LAND SURVEYING, INC.
P. O. BOX 148
FUQUAY-VARINA, NC 27526
(919) - 567 - 1963

PLOT PLAN
FOR
H & H HOMES
HIGHGROVE AT
ANDERSON CREEK
LOT 250
NEW CASTLE LANE
NORTH CAROLINA
HARNETT COUNTY ANDERSON CREEK TOWNSHIP

DRAWN BY NMF

DATE 1/29/19

CHECKED BY MPG

SCALE 1" = 30'