

VICINITY MAP (NTS)

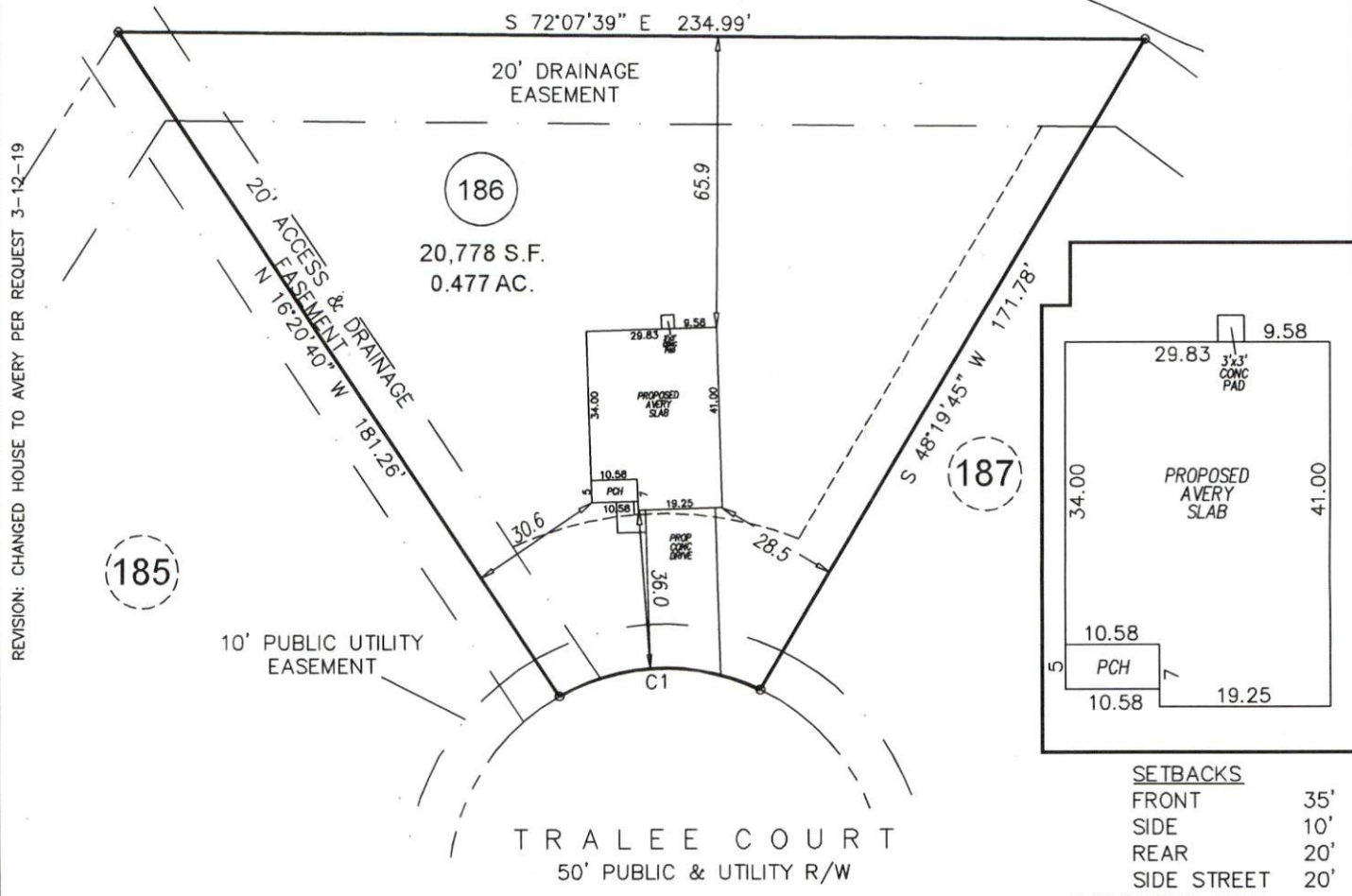
- LEGEND**
- PO=PORCH
 - P=PATIO
 - SW=SIDEWALK
 - DW=CONC DRIVEWAY
 - EB=ELECTRIC BOX
 - SCO=CLEANOUT
 - TP=TELEPHONE PEDESTAL
 - WM=WATER METER
 - AC=AIR CONDITIONING UNIT
 - BOC=BACK OF CURB
 - EOP=EDGE OF PAVEMENT
 - IRON PIPE FOUND
 - ⊙ IRON PIPE SET
 - NAIL SET

THIS SURVEY IS OF AN EXISTING PARCEL OR PARCELS OF LAND AND DOES NOT CREATE A NEW STREET OR CHANGE AN EXISTING STREET.

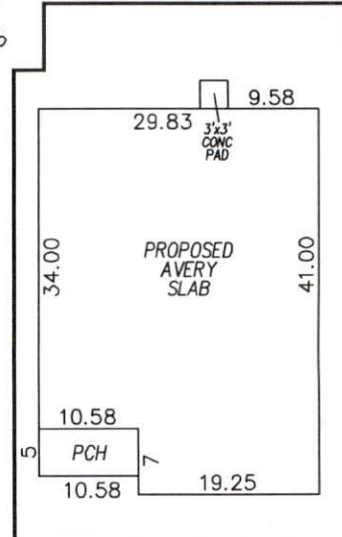
SHAWN T. RUMBERGER, PLS L-4909 DATE

THIS MAP IS ONLY INTENDED FOR THE PARTIES AND PURPOSES SHOWN. THIS MAP IS NOT FOR RECORDATION. NO TITLE REPORT PROVIDED.

CURVE	ARC LENGTH	RADIUS	CHORD BEARING	CHORD LENGTH
C1	47.83'	50.00'	N 74°22'26" W	46.03'



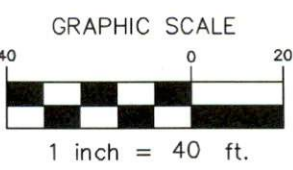
REVISION: CHANGED HOUSE TO AVERY PER REQUEST 3-12-19



- SETBACKS**
- FRONT 35'
 - SIDE 10'
 - REAR 20'
 - SIDE STREET 20'

IMPERVIOUS AREA

HOUSE	1,202 SQ.FT.
DRIVE	584 SQ.FT.
WALK	39 SQ.FT.
CONCRETE PAD	9 SQ.FT.
TOTAL	1,834 SQ.FT.
MAX. ALLOW	2,850 SQ.FT.



revised site plan
PRELIMINARY PLOT PLAN

ECLS	PROJECT: 18-003 AVERY POND
	DRAWN BY: AMW
	SCALE: 1"=40'
	DATE: 2-5-19

FOR
LGI HOMES
 66 TRALEE COURT
 LOT 186 AVERY POND SUBDIVISION; PHASE IIIA
 HECTOR'S CREEK TWP., HARNETT CO., NC
 P.B. 2018, PG. 382-384

ECLS GLOBAL, INC.
 U.S. VETERAN-OWNED
 19 N MCKINLEY ST
 COATS, NC 27521
 910.897.3257 ECLSGLOBALINC.COM
 910.897.2329 (FAX) CO#C-4175