

VICINITY MAP (NTS)

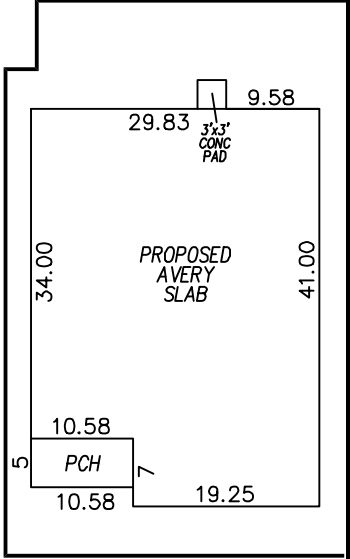
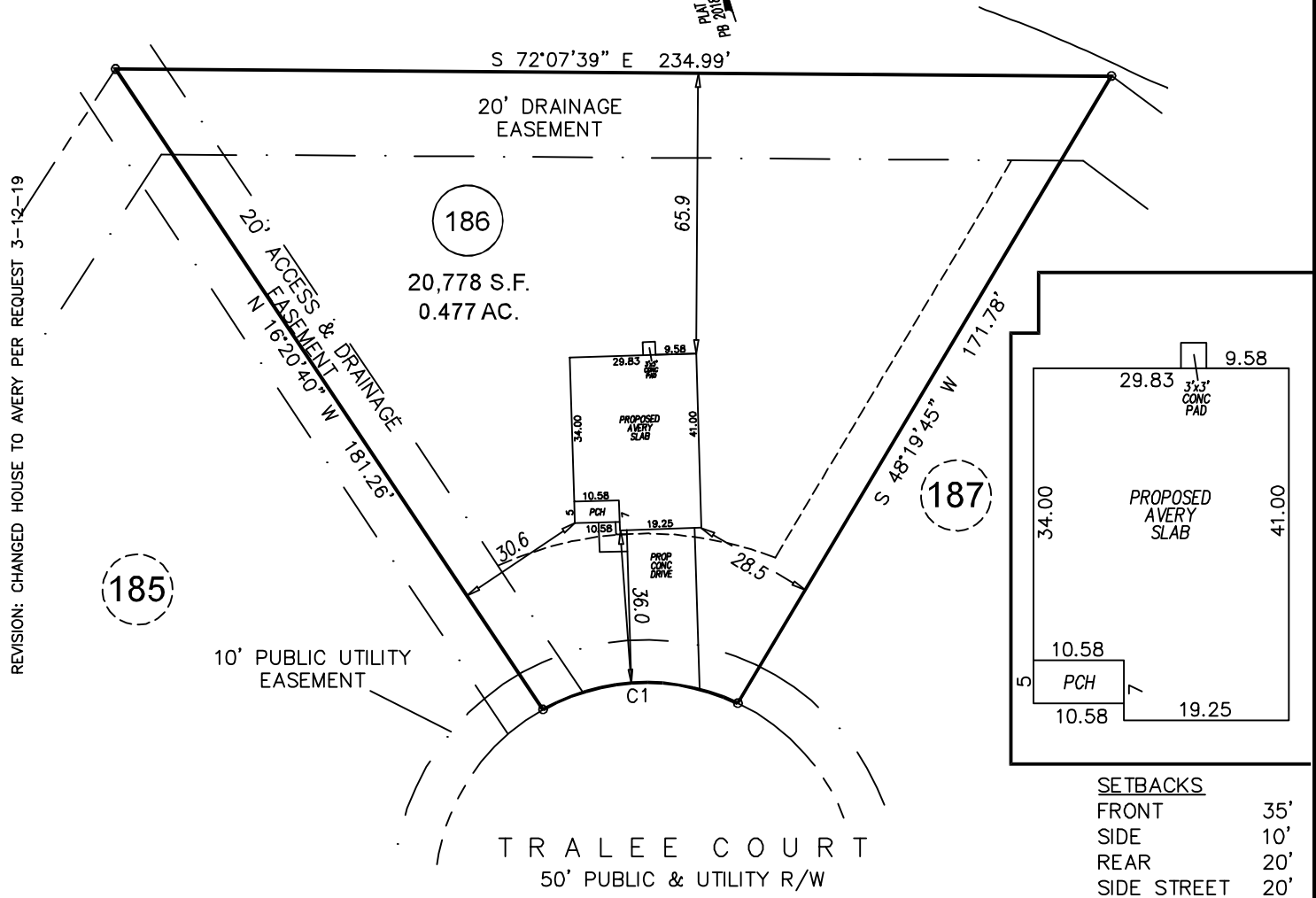
- LEGEND**
- PO=PORCH
 - P=PATIO
 - SW=SIDEWALK
 - DW=CONC DRIVEWAY
 - EB=ELECTRIC BOX
 - SCO=CLEANOUT
 - TP=TELEPHONE PEDESTAL
 - WM=WATER METER
 - AC=AIR CONDITIONING UNIT
 - BOC=BACK OF CURB
 - EOP=EDGE OF PAVEMENT
 - IRON PIPE FOUND
 - IRON PIPE SET
 - NAIL SET

THIS SURVEY IS OF AN EXISTING PARCEL OR PARCELS OF LAND AND DOES NOT CREATE A NEW STREET OR CHANGE AN EXISTING STREET.

SHAWN T. RUMBERGER, PLS L-4909 DATE

THIS MAP IS ONLY INTENDED FOR THE PARTIES AND PURPOSES SHOWN. THIS MAP IS NOT FOR RECORDATION. NO TITLE REPORT PROVIDED.

CURVE	ARC LENGTH	RADIUS	CHORD BEARING	CHORD LENGTH
C1	47.83'	50.00'	N 74°22'26" W	46.03'



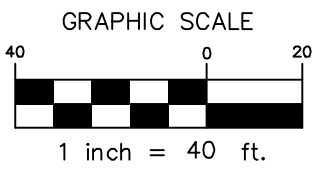
SETBACKS

FRONT	35'
SIDE	10'
REAR	20'
SIDE STREET	20'

IMPERVIOUS AREA

HOUSE	1,202 SQ.FT.
DRIVE	584 SQ.FT.
WALK	39 SQ.FT.
CONCRETE PAD	9 SQ.FT.

TOTAL 1,834 SQ.FT.
MAX. ALLOW 2,850 SQ.FT.



P R E L I M I N A R Y
P L O T P L A N

PROJECT:	18-003 AVERY POND
DRAWN BY:	AMW
SCALE:	1"=40'
DATE:	2-5-19

FOR
LGI HOMES
66 TRALEE COURT
LOT 186 AVERY POND SUBDIVISION; PHASE IIIA
HECTOR'S CREEK TWP., HARNETT CO., NC
P.B. 2018, PG. 382-384

ECLS GLOBAL, INC.
U.S. VETERAN-OWNED
19 N MCKINLEY ST
COATS, NC 27521
910.897.3257 ECLSGLOBALINC.COM
910.897.2329 (FAX) CO#C-4175