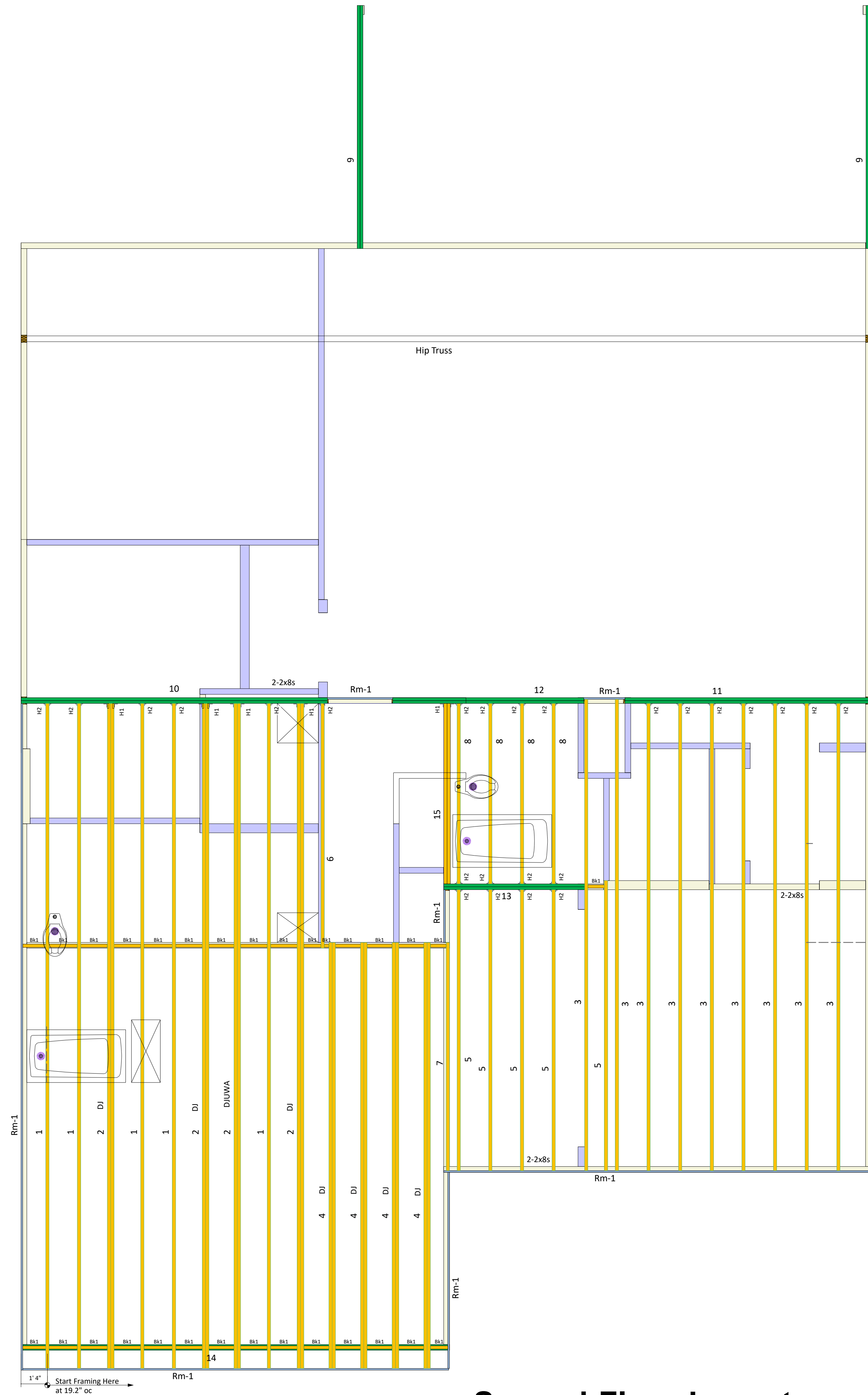


All I-Joist and Versa-Lam Beams
Must be Installed per The
Boise Cascade Installation Guide!



Second Floor Layout

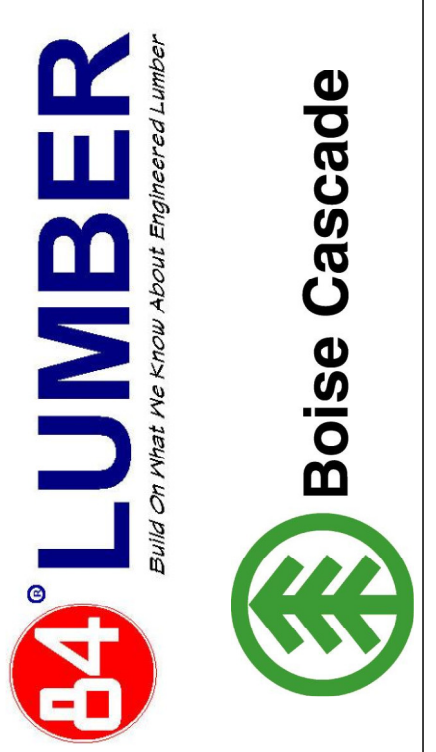
Squash Blocks Required
Under The Ends Of All LVL
And Point Loads For Load
Transfer - See Details

KB Homes
2939
46 Mason Pointe

Products				
PlotID	Net Qty	Product	Length	Plies
1	5	14" BCI® 5000s-1.8	34' 0"	1
2	8	14" BCI® 5000s-1.8	34' 0"	2
3	9	14" BCI® 5000s-1.8	24' 0"	1
4	8	14" BCI® 5000s-1.8	22' 0"	2
5	5	14" BCI® 5000s-1.8	15' 0"	1
6	1	14" BCI® 5000s-1.8	13' 0"	1
7	1	14" BCI® 5000s-1.8	12' 0"	1
8	4	14" BCI® 5000s-1.8	10' 0"	1
9	4	1-3/4" x 11-7/8" VERSA-LAM® 2.0 3100 SP	14' 0"	2
10	2	1-3/4" x 14" VERSA-LAM® 2.0 3100 SP	16' 0"	2
11	2	1-3/4" x 14" VERSA-LAM® 2.0 3100 SP	14' 0"	2
12	2	1-3/4" x 14" VERSA-LAM® 2.0 3100 SP	10' 0"	2
13	2	1-3/4" x 14" VERSA-LAM® 2.0 3100 SP	8' 0"	2
14	2	1-3/4" x 18" VERSA-LAM® 2.0 3100 SP	22' 0"	2
15	2	14" BCI® 5000s-1.8	10' 0"	2
Rm-1	10	1" x 14" BC RIM BOARD OSB	12' 0"	1
Bk1	19	14" BCI® 5000s-1.8	2' 0"	1

Connector Summary			
PlotID	Qty	Manuf	Product
H1	5	Simpson	HU4.12/11
H2	25	Simpson	IUS 2.06/14

Revisions:	BY:



SALES PRESENTATION DRAWING
No structural or dimensional check has been made of this design drawing of the building, therefore, purchaser is to check and approve all dimensions, quantities, loads, and details carefully. This drawing has not been checked by Boise Engineering.

KB Homes
2939
46 Mason Pointe
84 Lumber EWP

BC FRAMER II
Plan Date: 08172018
Structural Date: 09122018
By: CMM
Sheet: 2/3

ALL DIMENSIONS AND CONDITIONS
TO BE REVIEWED AND APPROVED
BY BOTH THE CONTRACTOR AND
THE ENGINEER OF RECORD
PRIOR TO INSTALLATION