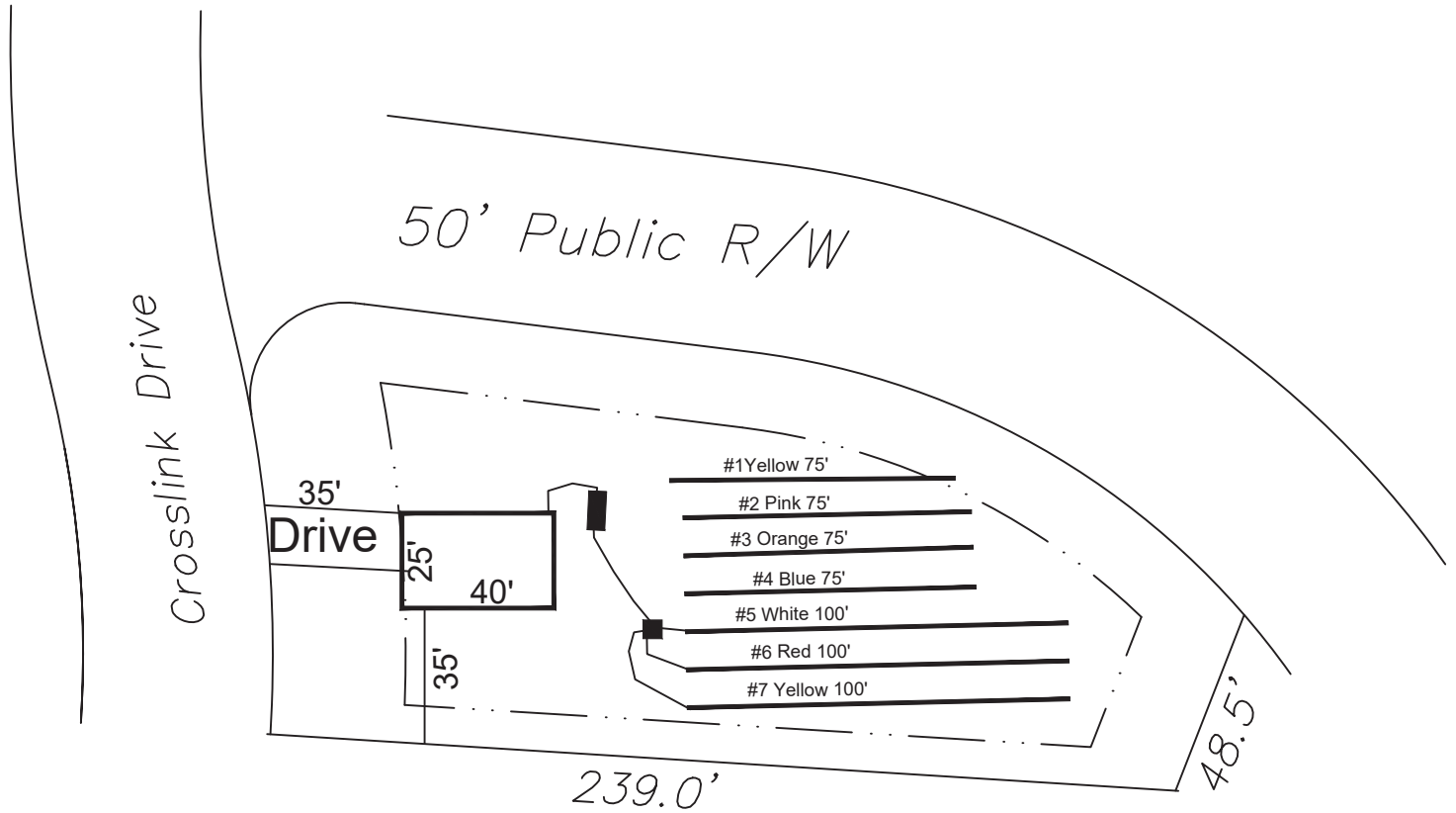


Crosslink Subdivision True-Homes - Lot #61 4-Bedroom Septic System Design



(61)

0.582 Ac.

System: Gravity to D-Box
 Lines: 5-7, (300')
 0.4 LTAR
 18-24" Trench Bottom
 Accepted Status System
 Repair: Gravity to D-Box
 Lines: 1-4, (300')
 0.4 LTAR
 18-24" Trench Bottom
 Accepted Status System

GRAPHIC SCALE
 1" = 50'



Adams
 Soil Consulting
 919-414-6761
 Job #522