



CURVE TABLE

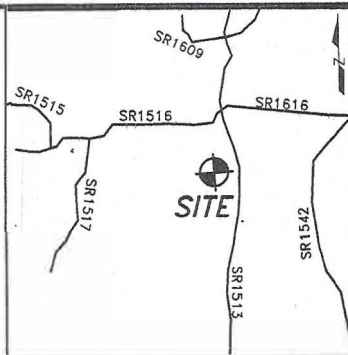
CURVE	RADIUS	LENGTH	CH.	BEARING	CHORD
C19(F)	24.89'	39.17'	S67°31'12"E	35.25'	
C19(R)	25.00'	39.27'	N44°07'34"E	35.36'	

LINE TABLE

LINE	BEARING	DIST
L1(F)	N89°02'26"E	20.09'
L1(R)	S89°07'34"W	20.00'
L2(F)	S00°43'09"E	39.94'
L2(F)	N00°52'26"W	40.00'

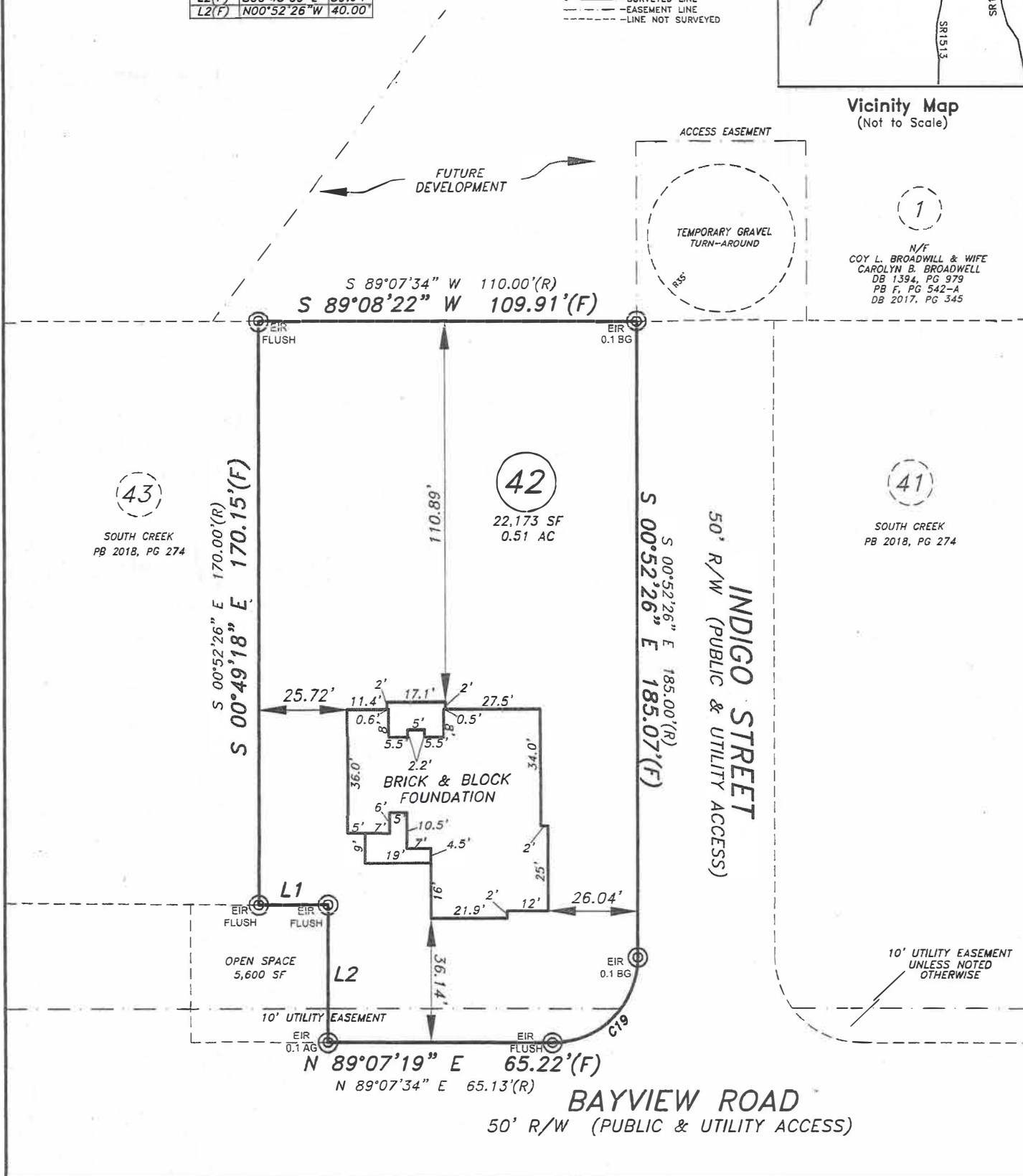
LEGEND

- R/W-RIGHT OF WAY
- DB-DEED BOOK
- PG-PAGE
- #3 EIR-EXISTING 3/8" IRON REBAR
- SF-SQUARE FEET
- AC-ACRE(S)
- PB-PLAT BOOK
- AG-ABOVE GROUND
- BG-BELOW GROUND
- (F)-FIELD MEASUREMENT
- (R)-RECORDED MEASUREMENT
- SURVEYED LINE
- - - EASEMENT LINE
- LINE NOT SURVEYED



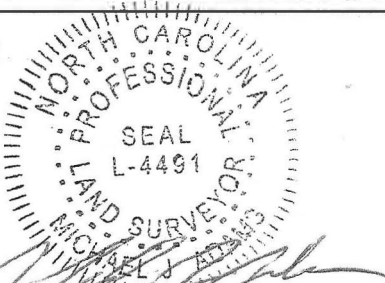
Vicinity Map
(Not to Scale)

1
N/F
COY L. BROADWILL & WIFE
CAROLYN B. BROADWELL
DB 1394, PG 979
PB F, PG 542-A
DB 2017, PG 345



FOUNDATION SURVEY

PROPERTY OF: WATERMARK HOMES
ADDRESS: 51 BAYVIEW ROAD
CITY: NEAR LILLINGTON, NC
COUNTY: HARNETT
NC PIN: 0661-70-5529.000

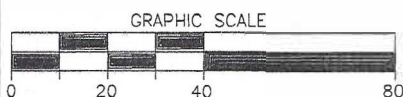


MICHAEL J. ADAMS PLS# L-4491
CFS NC-075

TOWNSHIP: NEILLS CREEK
DATE: AUGUST 8, 2019
SCALE: 1" = 40'
REFERENCE: LOT 42
SOUTH CREEK
SUBDIVISION
PB 2018 PG 274

NOTES

I CERTIFY THAT THIS MAP WAS DRAWN UNDER MY SUPERVISION FROM AN ACTUAL SURVEY MADE UNDER MY SUPERVISION, DEED DESCRIPTION RECORDED IN PB 2018, PG 274, THAT THE BOUNDARIES NOT SURVEYED ARE INDICATED AS DRAWN FROM INFORMATION IN PB 2018, PG 274; THAT THE RATIO OF PRECISION OR POSITIONAL ACCURACY IS GREATER THAN 1:10,000; AND THAT THIS MAP MEETS THE REQUIREMENTS OF THE STANDARDS OF PRACTICE FOR LAND SURVEYING IN NORTH CAROLINA (21 NCAC 56.1600). THIS MAP IS NOT DRAWN IN ACCORDANCE WITH GS 47-30. THIS 8TH DAY OF AUGUST, 2019.



DRAWN BY: LKH