

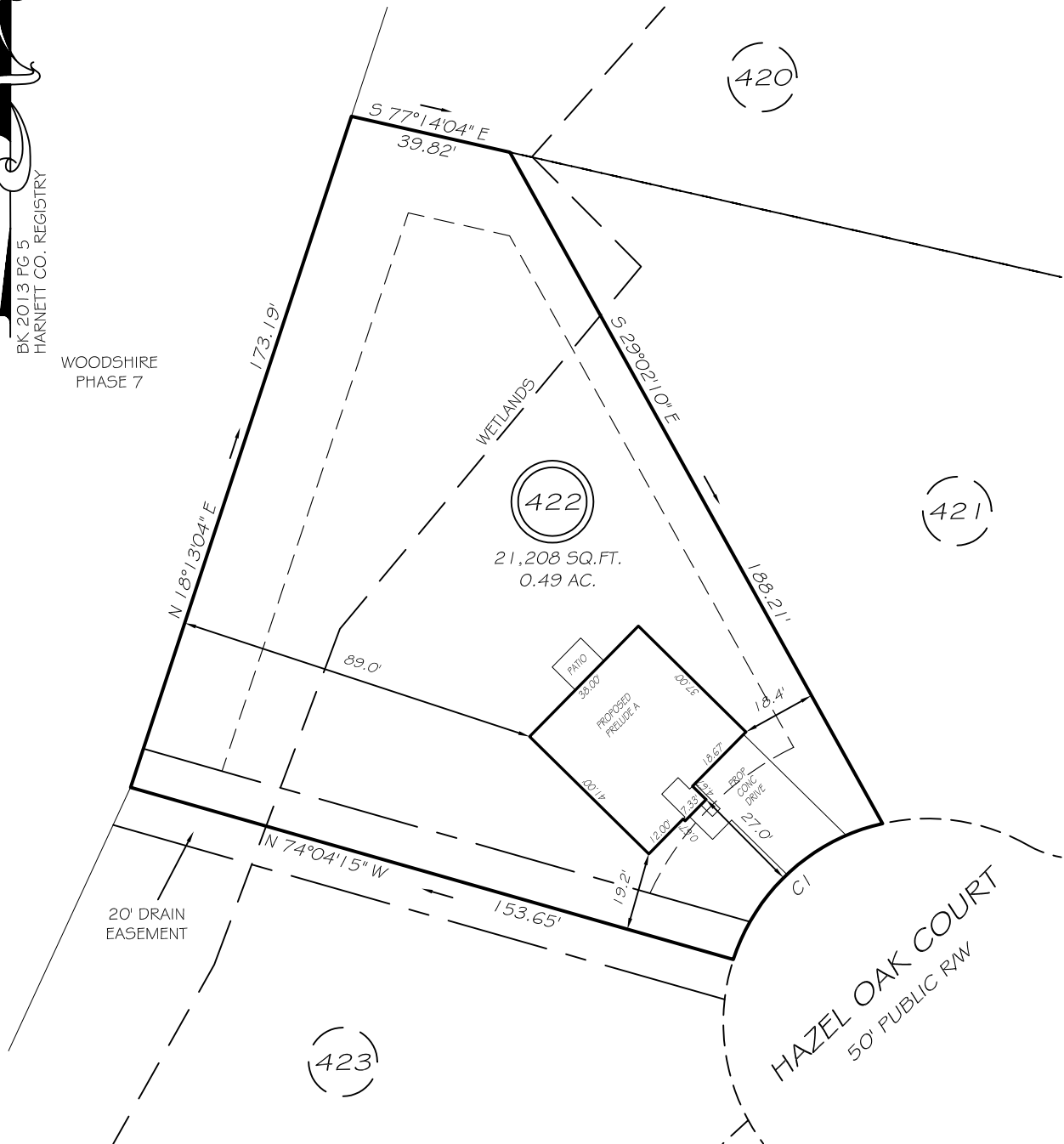
I, MICHAEL P. GRIFFIN, certify that under my direction and supervision this map was drawn from an actual field survey; that the error of closure of the survey as calculated by coordinates is 1: 10,000+; that the area shown hereon was calculated by coordinates.

Witness my hand and seal this day of MONTH 2018.



BK 2013 PG 5
HARNETT CO. REGISTRY

WOODSHIRE
PHASE 7



SETBACKS

FRONT	25'
REAR	20'
SIDE	10'
CORNER SIDE	20'

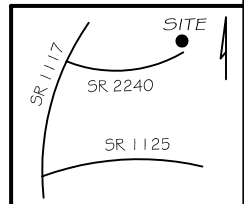
CI R=50.00' L=51.76' S47°40'10"W 49.48'

*THERE SHALL BE A 5' UTILITY EASEMENT
ALONG FRONT OF ALL LOTS

LEGEND

PRELIMINARY
NOT FOR RECORDATION,
SALES OR CONVEYANCE

EIP	EXISTING IRON PIPE	FES	FLARED END SECTION
IPS	IRON PIPE SET	WM	WATER METER
RAW	RIGHT OF WAY	CO	CLEAN OUT
N/F	NOW OR FORMERLY	FH	FIRE HYDRANT
EIS	EXISTING IRON STAKE	CB	CATCH BASIN



GRIFFIN LAND SURVEYING, INC.

P. O. BOX 148
FUQUAY-VARINA, NC 27526
(919) - 567-1963

PLOT PLAN
FOR

H & H HOMES

WOODSHIRE
LOT 422

HAZEL OAK COURT
NORTH CAROLINA

HARNETT CO. ANDERSON CREEK TWSHP

DRAWN BY NMF

DATE 7/25/18

CHECKED BY MPG

SCALE 1" = 40'