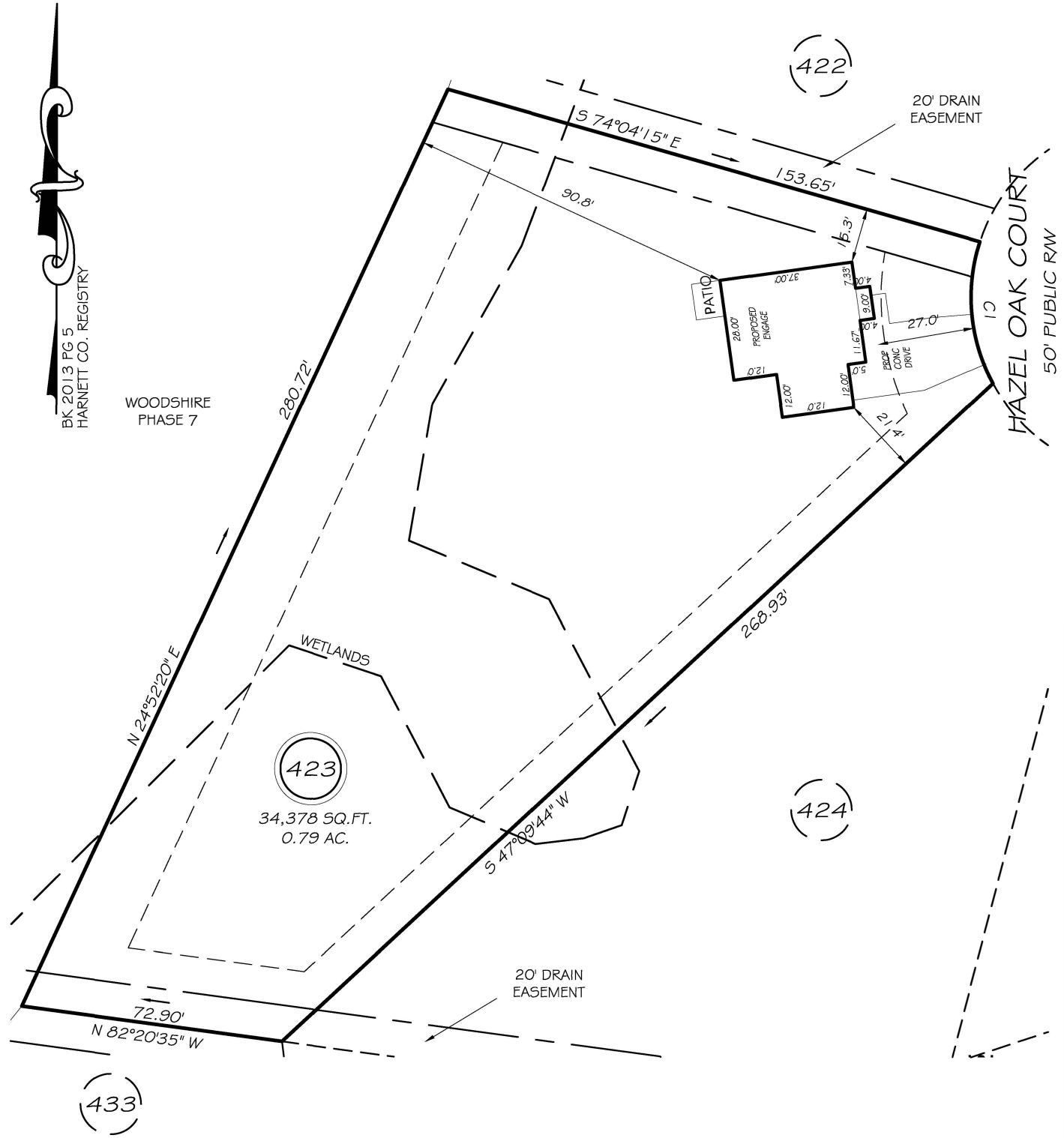


I, MICHAEL P. GRIFFIN, certify that under my direction and supervision this map was drawn from an actual field survey; that the error of closure of the survey as calculated by coordinates is 1: 10,000+; that the area shown hereon was calculated by coordinates.

Witness my hand and seal this day of MONTH 2018.



BK 2013 PG 5
HARNETT CO. REGISTRY

WOODSHIRE
PHASE 7

20' DRAIN
EASEMENT

HAZEL OAK COURT
50' PUBLIC RAW

WETLANDS

423
34,378 SQ.FT.
0.79 AC.

20' DRAIN
EASEMENT

424

433

SETBACKS

FRONT	25'
REAR	20'
SIDE	10'
CORNER SIDE	20'

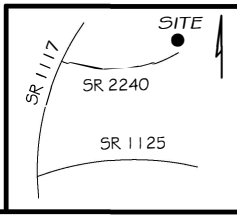
REVISION: LH GARAGE 8-31-18

C1 R=50.00' L=40.65' S05°16'48"E 39.54'

*THERE SHALL BE A 5' UTILITY EASEMENT
ALONG FRONT OF ALL LOTS

LEGEND

EIP	EXISTING IRON PIPE	FES	FLARED END SECTION
IPS	IRON PIPE SET	WM	WATER METER
RAW	RIGHT OF WAY	CO	CLEAN OUT
N/F	NOW OR FORMERLY	FH	FIRE HYDRANT
EIS	EXISTING IRON STAKE	CB	CATCH BASIN



PRELIMINARY
NOT FOR RECORDATION,
SALES OR CONVEYANCE



GRIFFIN LAND SURVEYING, INC.
P.O. BOX 148
FUQUAY-VARINA, NC 27526
(919) - 567-1963

PLOT PLAN
FOR
H & H HOMES

WOODSHIRE
LOT 423
HAZEL OAK COURT
NORTH CAROLINA
HARNETT CO. ANDERSON CREEK TWSHP

DRAWN BY **NMF**

DATE **7/25/18**

CHECKED BY **MPG**

SCALE **1" = 40'**