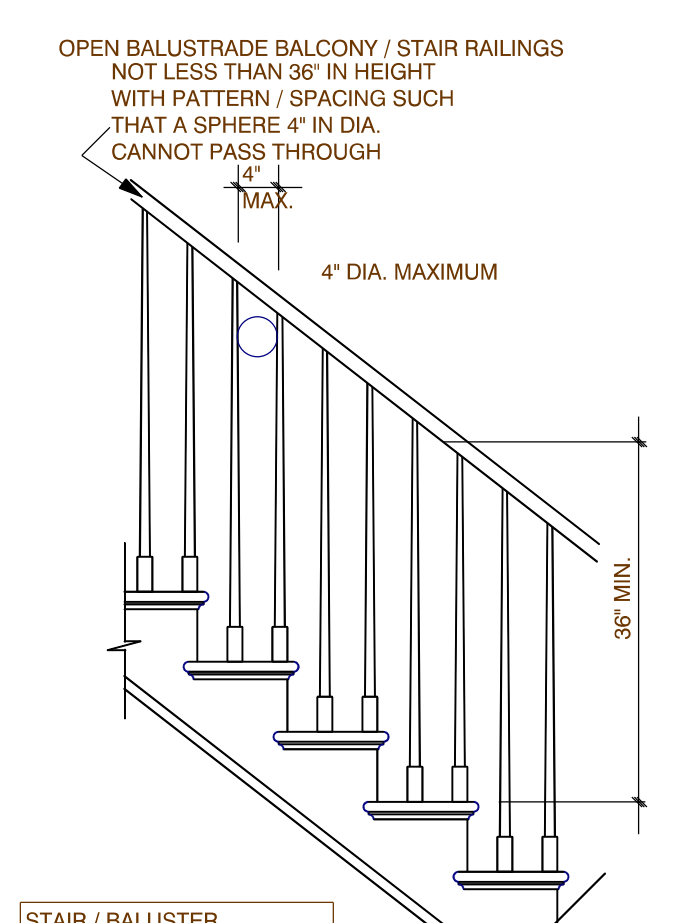
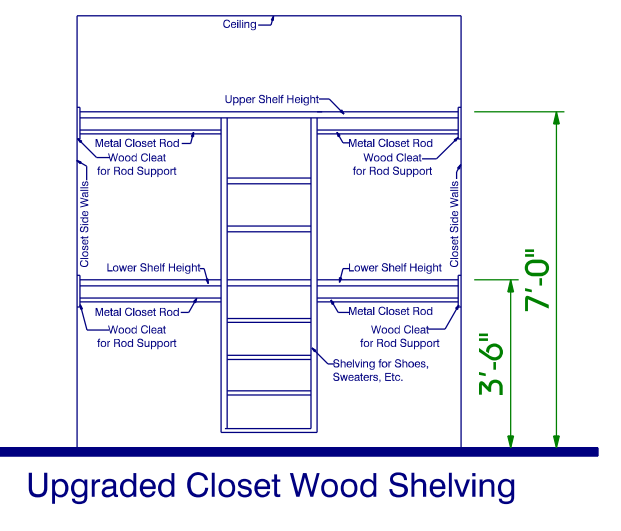
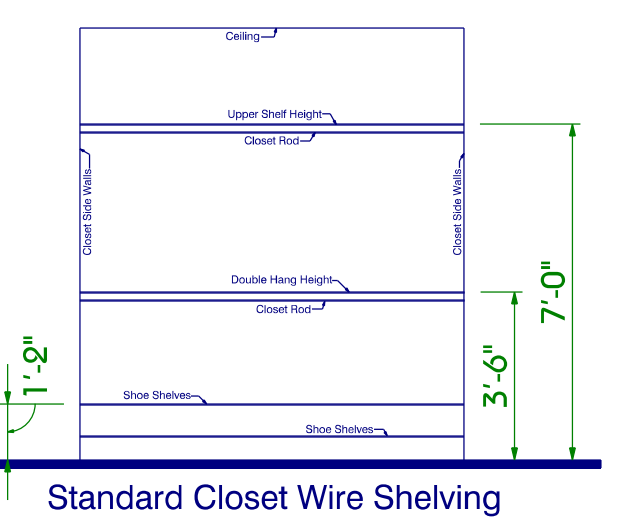


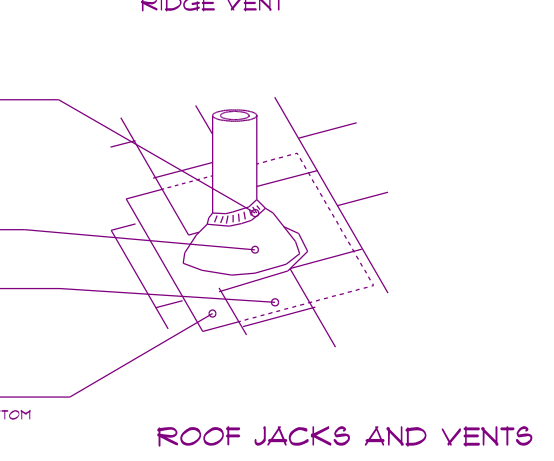
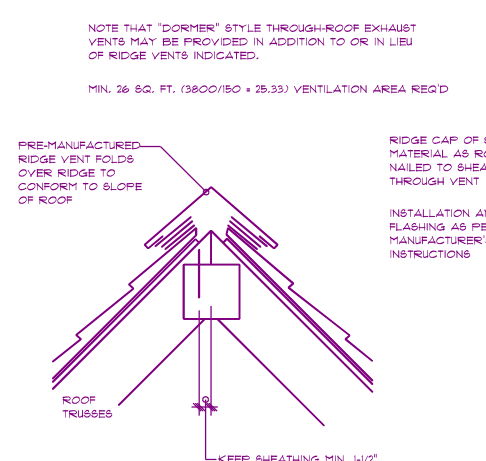
Overhang Detail - Brick
SCALE: 1" = 10"



STAIR RAILING
ALL HANDRAILS SHALL BE CONTINUOUS THE FULL LENGTH OF THE STAIRS. HANDGRIP PORTION OF ALL HANDRAILS SHALL NOT BE LESS THAN 1-1/4" NOR MORE THAN 2" IN CROSS SECTIONAL DIMENSION. OR THE SHAPE SHALL PROVIDE AN EQUIVALENT GRIPPING SURFACE.



Standard Closet Wire Shelving
Upgraded Closet Wood Shelving



RIDGE VENT
ROOF JACKS AND VENTS

Fireplace Details

Framing Dimensions		
Opening	ORION36ZB6 ORION36ZP2	ORION42ZB6 ORION42ZP2
A	42-1/4" (1073)	48-1/4" (1226)
B	40-1/4" (1022)	40-1/4" (1022)
C	23-5/8" (600)	29-5/8" (753)
D	12-1/4" (311)	15-1/4" (387)
E	63-3/4" (1619)	69-3/4" (1772)
F	31-7/8" (810)	34-7/8" (866)
G*	20-1/2" (521)	20-1/2" (521)
H	45 (1143)	49-3/8 (1254)

Table 1- This Table Corresponds to Figures 7, 8 & 9
* Back of Wall of Chase/Enclosure including Finishing Materials, If Any.

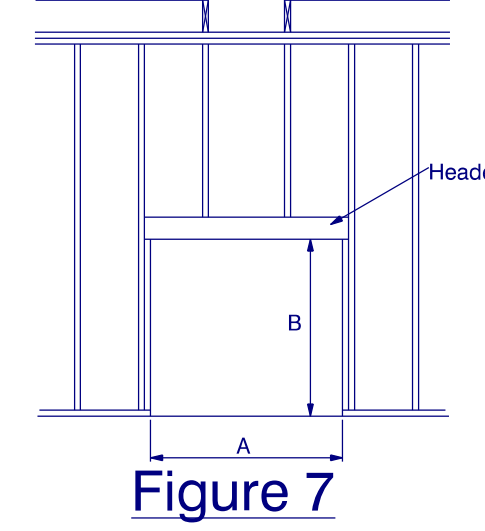


Figure 7

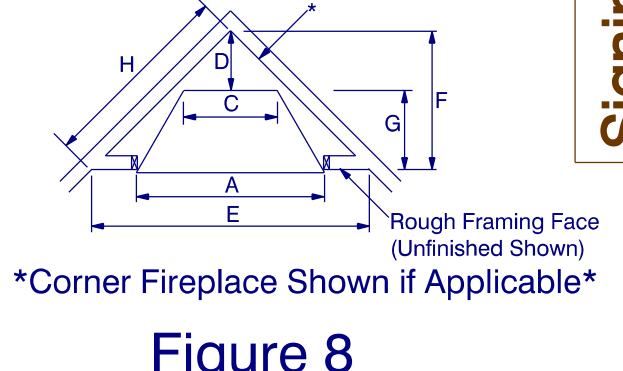


Figure 8

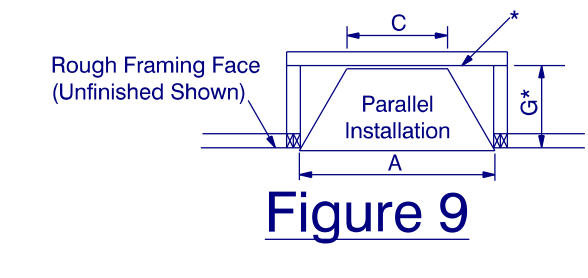
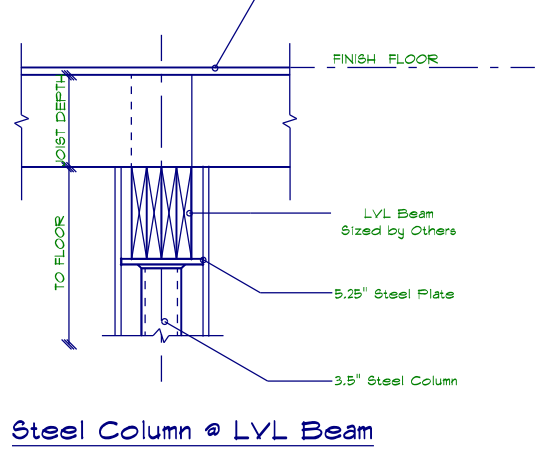


Figure 9

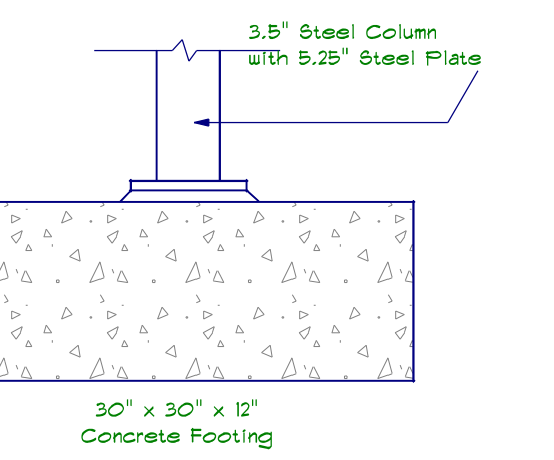
* Warning*
- Do Not fill spaces around the firebox with insulation or other materials.
- Do Not notch framing or alter the spacers on the appliance.

Gas Log Specification unless otherwise noted

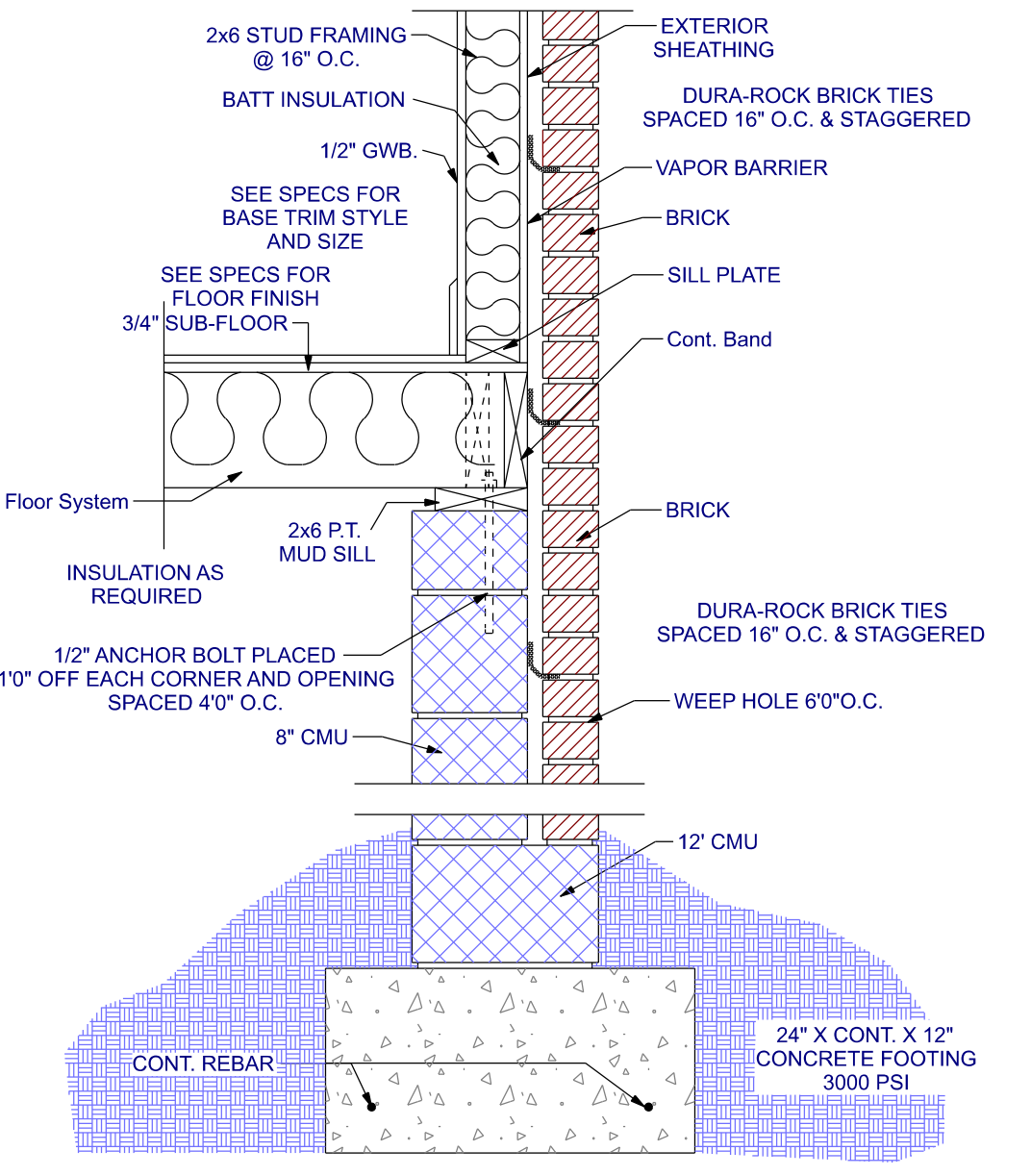
	Chestnut Hill 18	Chestnut Hill 24
Model	Chestnut Hill 18	Chestnut Hill 24
Venting Type	Vent-Free	Vent-Free
Log Size	18"	24"
BTU	19,000-36,000	19,000-36,000
Burner Style	EOS18	EOS18
Control Type	Manual or Millivolt	Manual or Millivolt
Fuel Type	Gas	Gas
Log Material	Cast Refractory	Cast Refractory
View Style	Front View	Front View
Minimum Fireplace Width	24"	28"
Minimum Fireplace Height	17"	17"
Minimum Fireplace Depth	13-1/2"	13-1/2"
Warranty	3 Year Limited Warranty	3 Year Limited Warranty



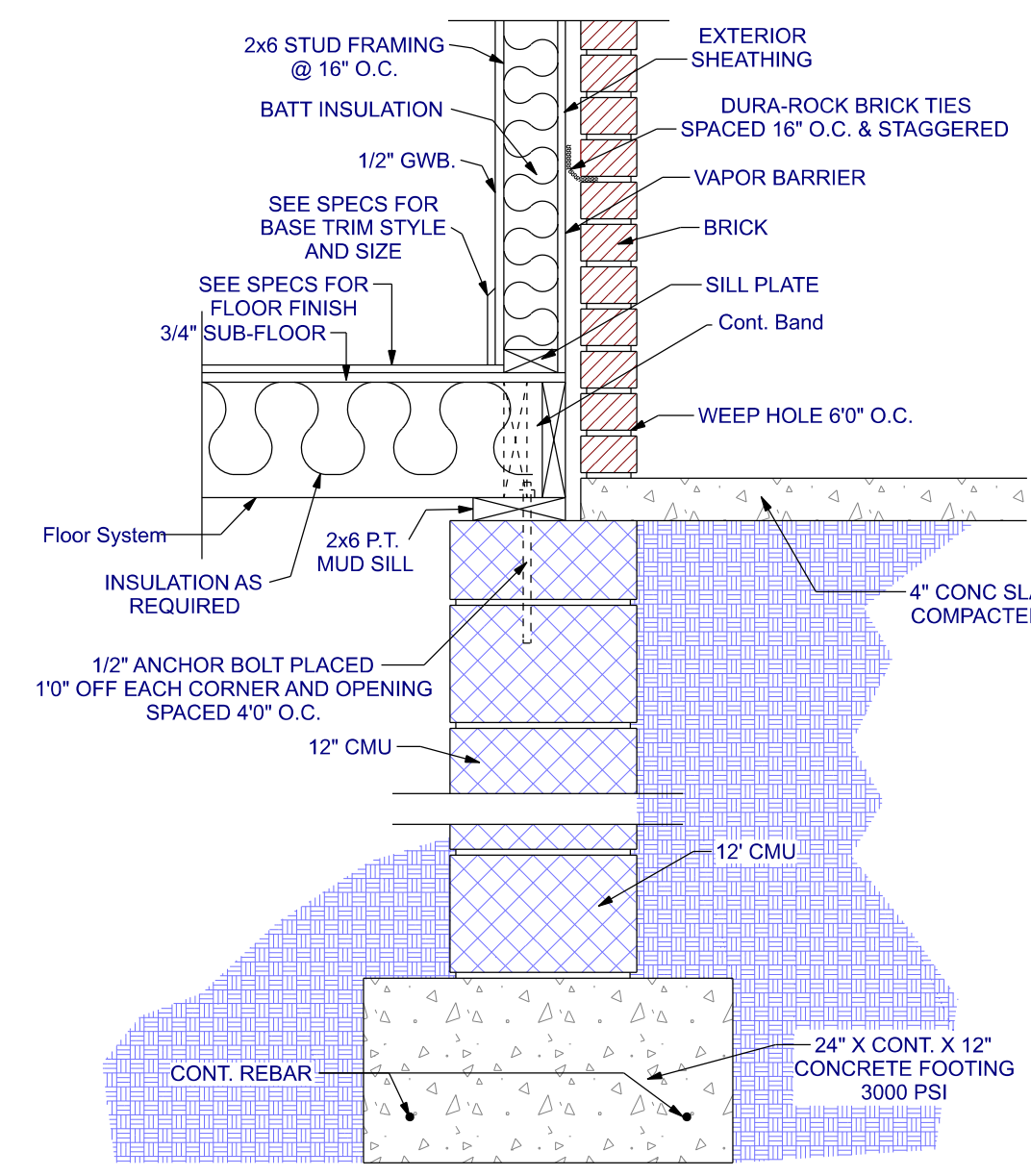
Steel Column & LVL Beam



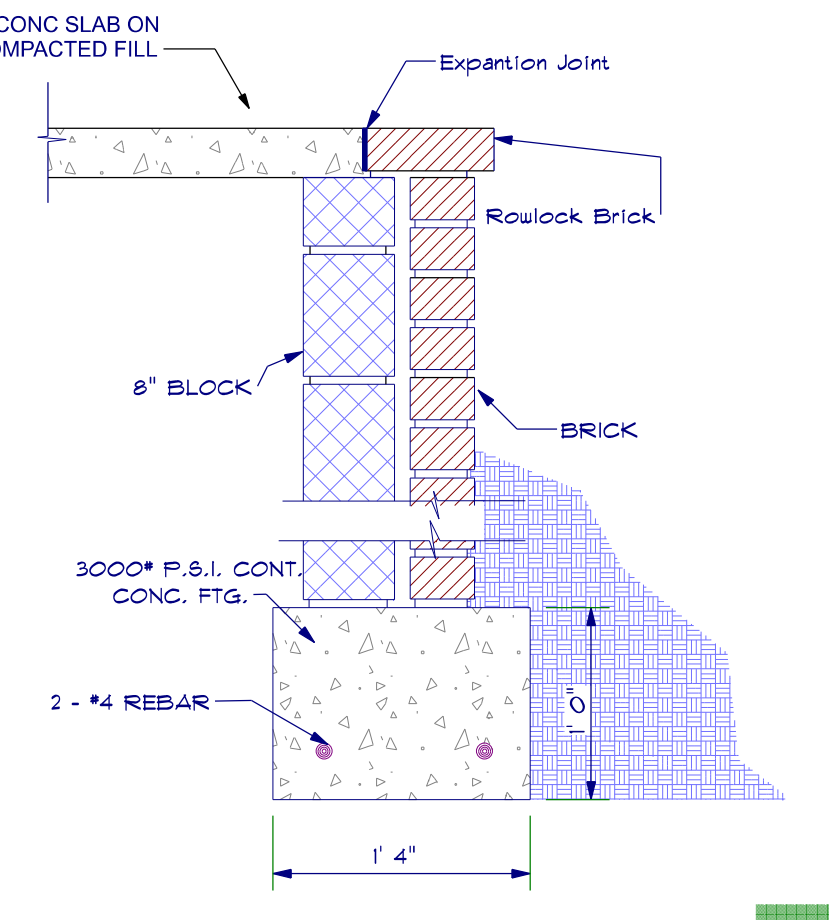
COLUMN FOOTING



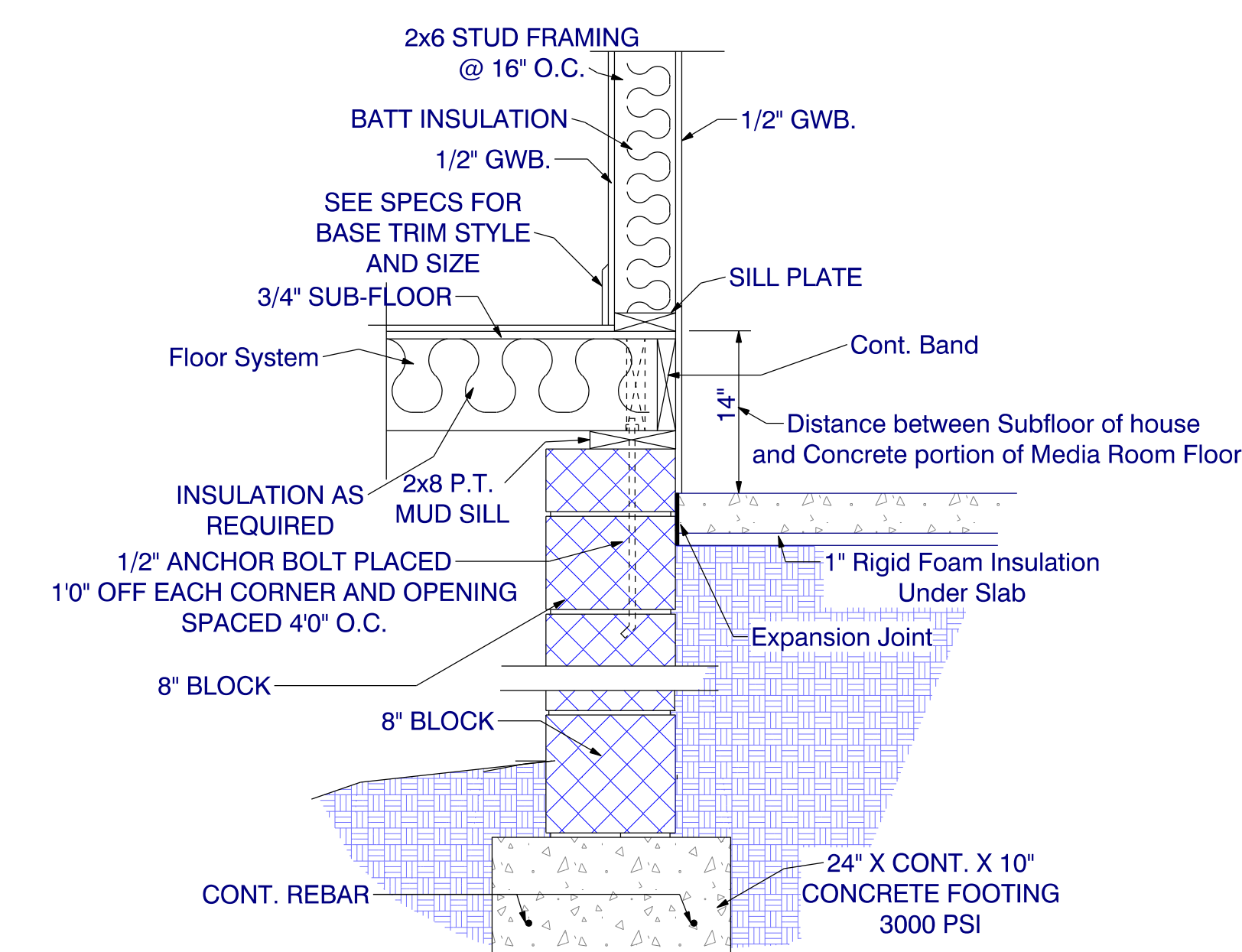
Exterior Wall Detail - Brick
SCALE: 1" = 10"



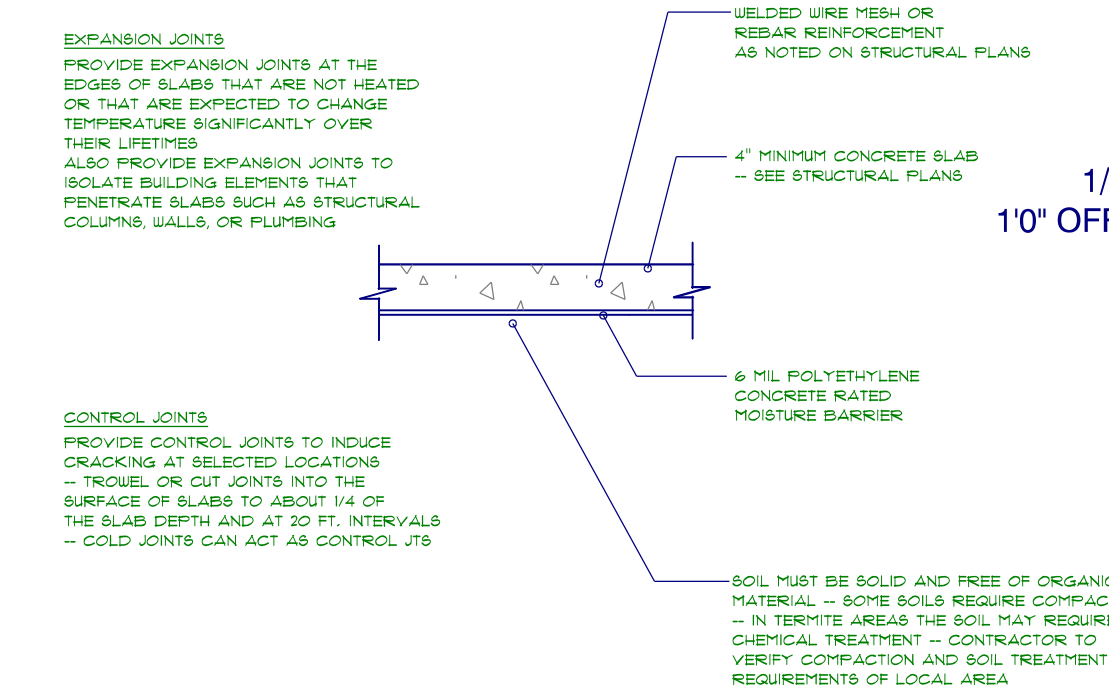
Exterior Wall Detail - Porch
SCALE: 1" = 10"



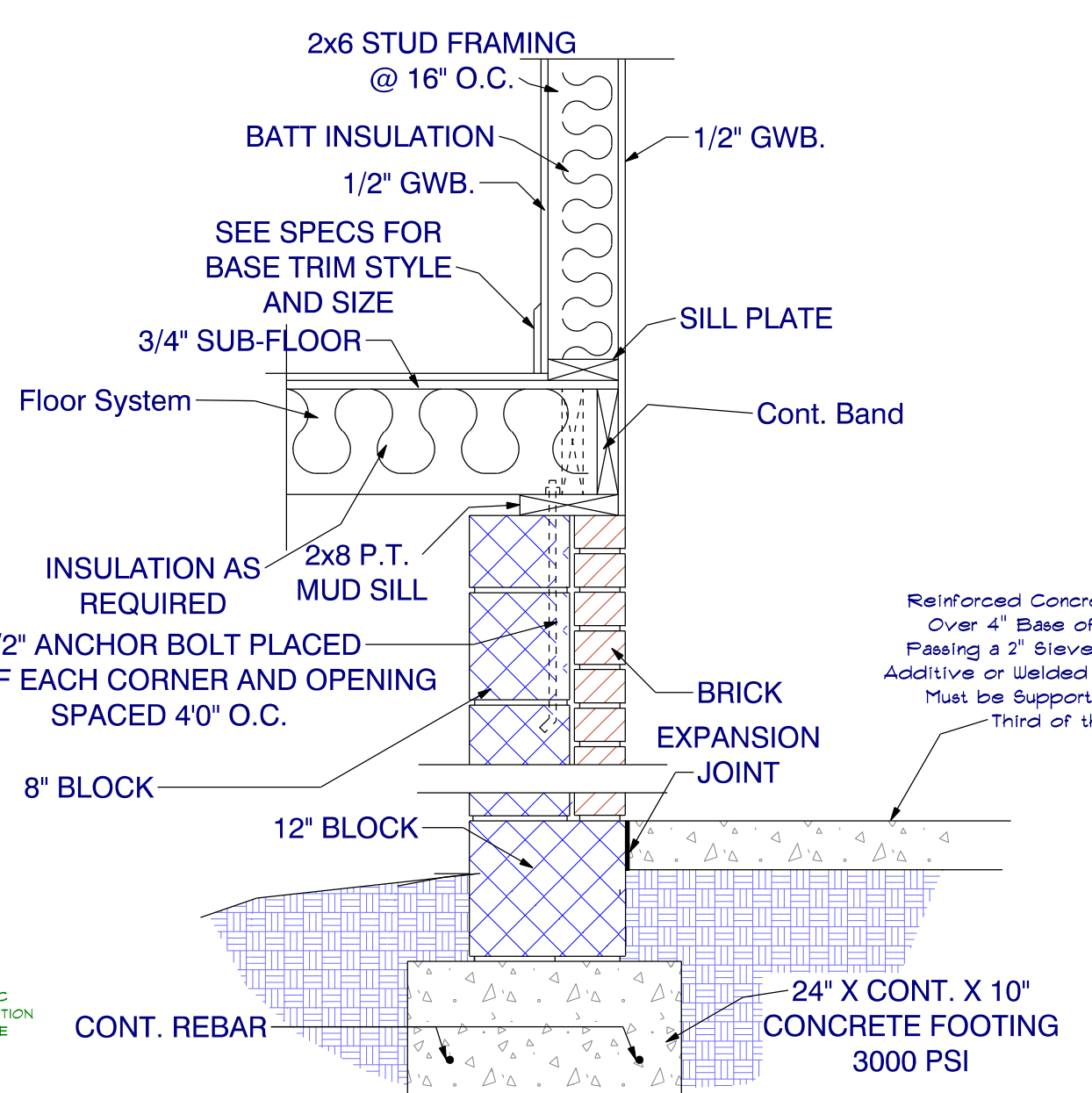
Foundation Wall & Porch
SCALE: 1" = 10"



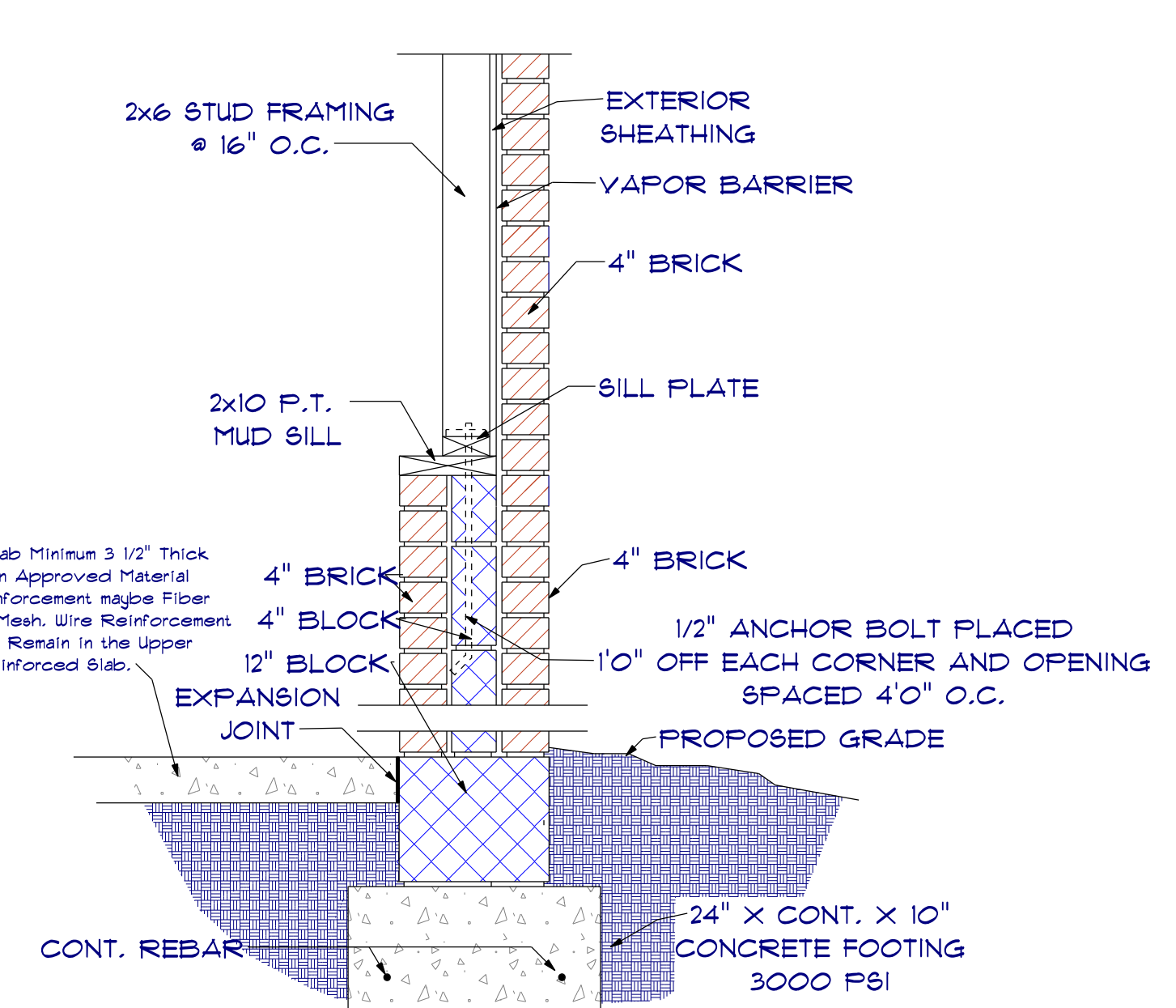
Wall Detail Between Crawspace and Media Room
SCALE: 1" = 10"



CONCRETE SLAB DETAILS / NOTES



Wall Detail Between Heated Space & Garage
SCALE: 1" = 10"



Exterior Wall Detail Brick - Garage Exterior
SCALE: 1" = 10"

"I DO HEREBY CERTIFY THAT THIS DRAWING OR PLAN AND RELATED SPECIFICATIONS MEET ALL LOCAL REQUIREMENTS AND ARE IN SUBSTANTIAL CONFORMITY WITH BOTH SAH AND VA MINIMUM PROPERTY REQUIREMENTS INCLUDING THE INTERNATIONAL BUILDING CODE COUNCIL (2012 NC BUILDING CODE), ENERGY CONSERVATION STANDARDS OF THE 2012 COUNCIL OF AMERICAN BUILDING OFFICIALS, MODEL ENERGY CODE AND THE REQUIREMENT FOR LEAD-FREE PIPING.

Owner:	Owner:	Builder:	Designer:	Office Manager:	Superintendent:



Like Us on www.facebook.com/southeasterngc

Subscribe to us www.youtube.com/southeasterngc

Follow Us on www.pinterest.com/seginc/

Website: www.southeasterngc.com
Location: 3059 N. Main Street Hope Mills NC 28348 Suite 16
Office Phone: 1 910 824 7505

Project: Lewis Residence
MODEL: SEGC-2985
BUILDER: Southeastern General Contractors

DATE PRINTED: Nov. 2018

DRAWN BY: ATF

Construction Details

SHEET
4