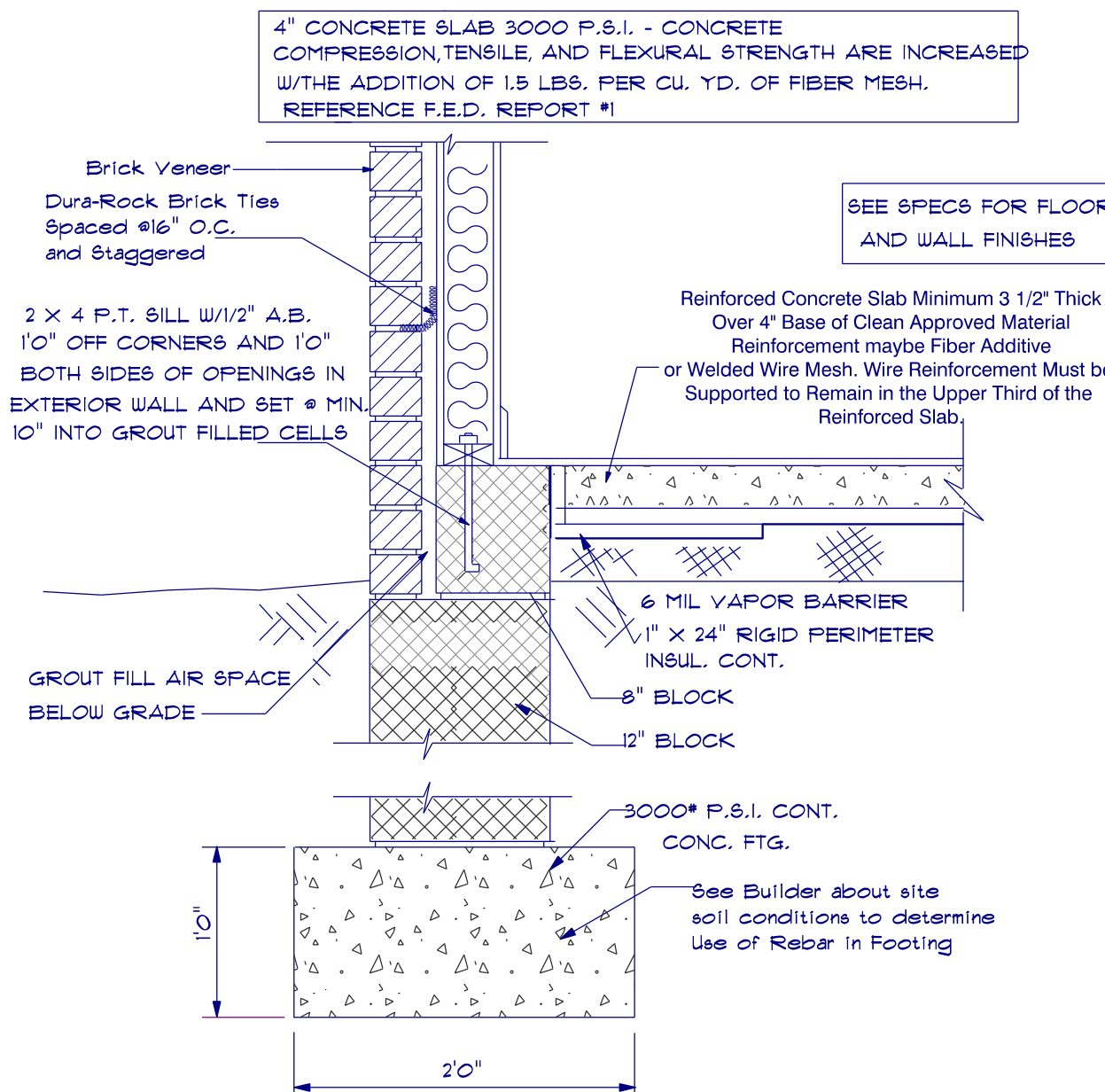
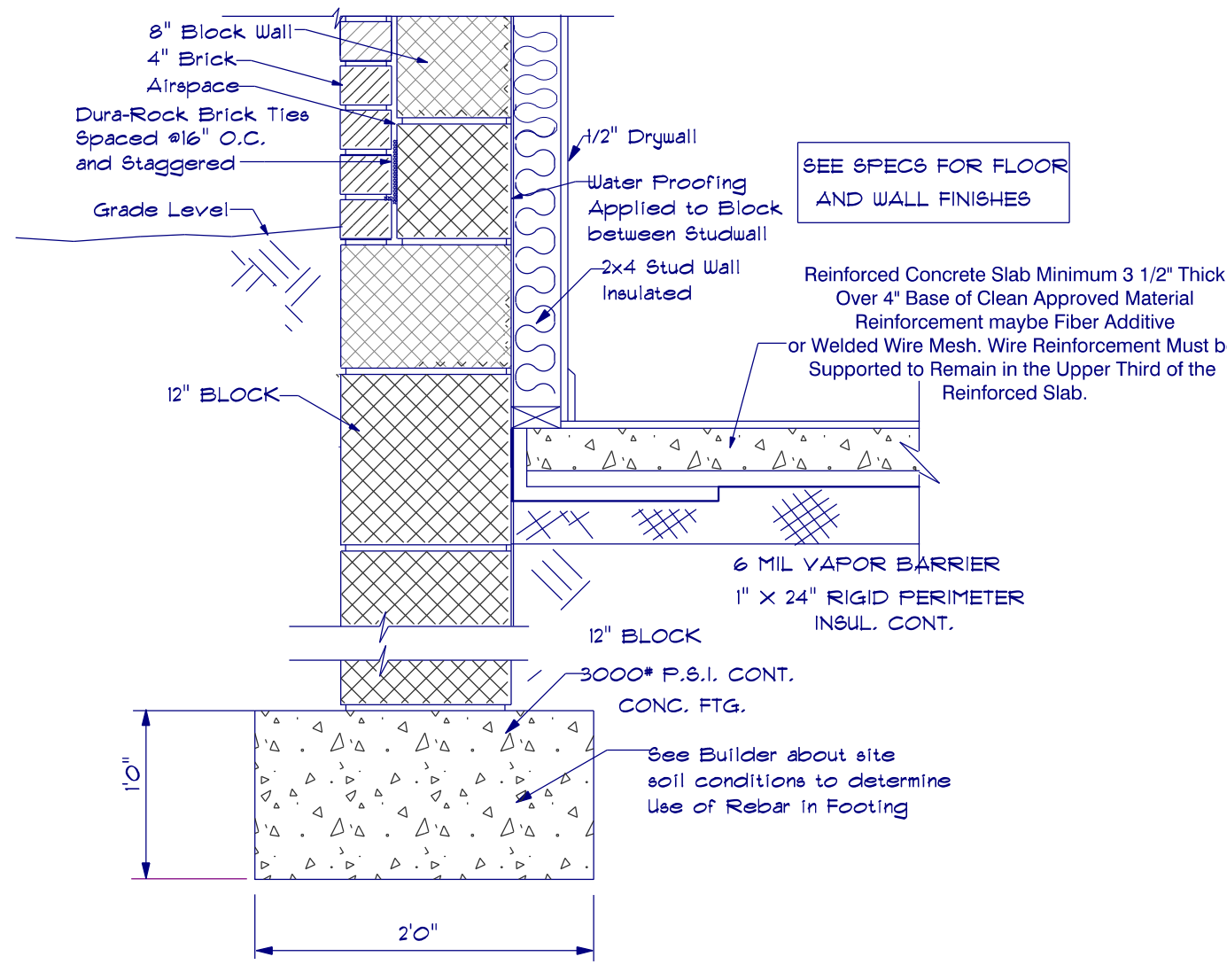


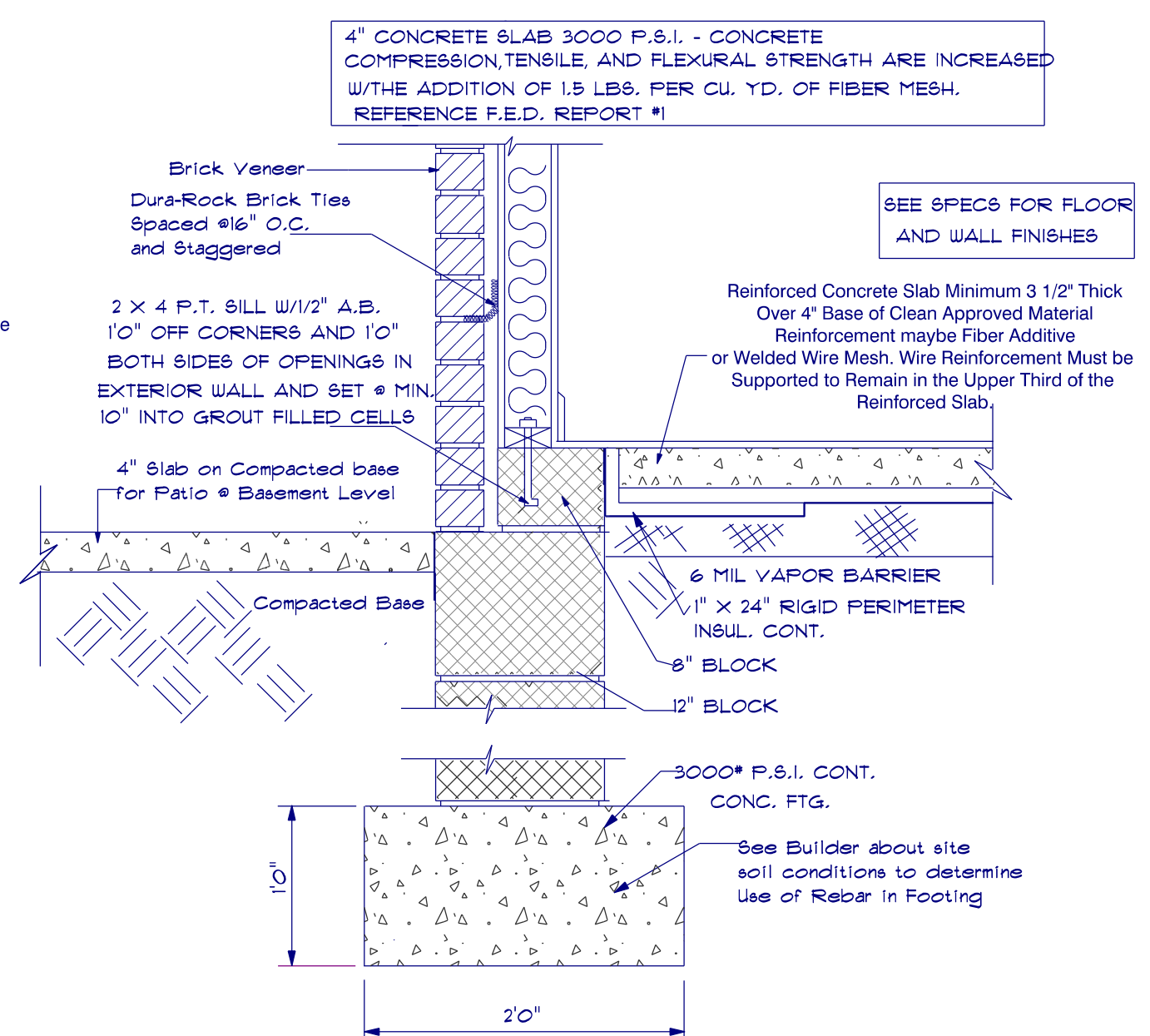
**Raised Slab
With Brick**
Scale: 1/2" = 1'0"



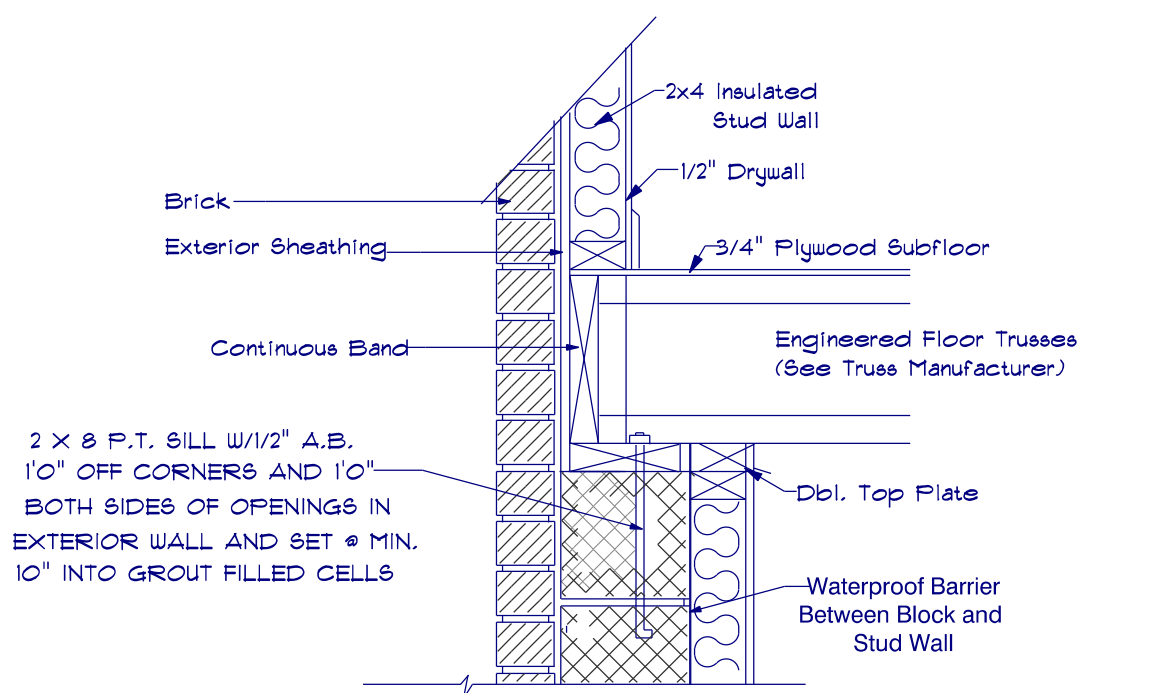
**Raised Slab
With Brick Wide Footing**
Scale: 1/2" = 1'0"



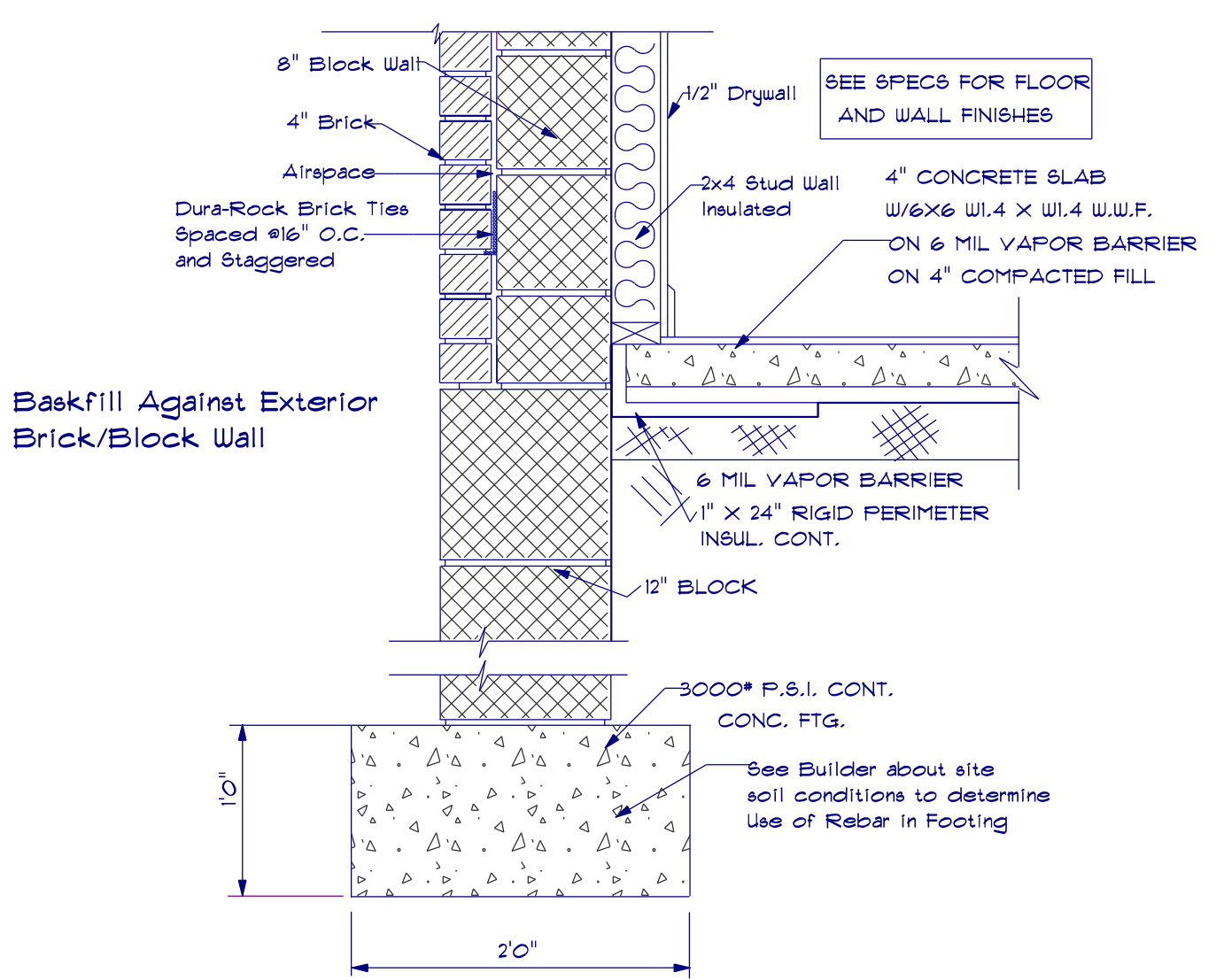
**Raised Slab @
Basement Level**
Scale: 1/2" = 1'0"



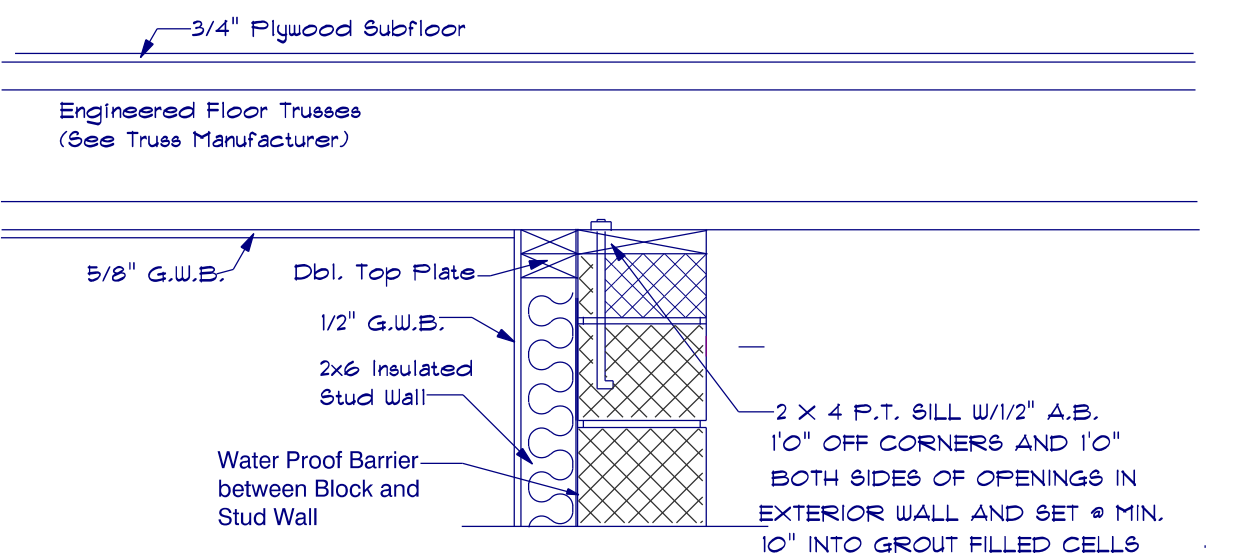
**Raised Slab
@ Basement Patio**
Scale: 1/2" = 1'0"



**Exterior Wall
@ Basement Level**
Scale: 1/2" = 1'0"



**Wall Section @
Basement and Crawlspace
Area** Scale: 1/2" = 1'0"



"I DO HEREBY CERTIFY THAT THIS DRAWING OR PLAN AND RELATED SPECIFICATIONS MEET ALL LOCAL REQUIREMENTS AND ARE IN SUBSTANTIAL CONFORMITY WITH BOTH SAH AND VA MINIMUM PROPERTY REQUIREMENTS INCLUDING THE INTERNATIONAL BUILDING CODE COUNCIL (2012 NC BUILDING CODE), ENERGY CONSERVATION STANDARDS OF THE 2012 COUNCIL OF AMERICAN BUILDING OFFICIALS, MODEL ENERGY CODE AND THE REQUIREMENT FOR LEAD-FREE PIPING."

Signing Here Indicates Approval of All Drawings and Related Specifications

APPROVED BY	DATE
Owner:	
Owner:	
Builder:	
Designer:	
Office Manager:	
Superintendent:	



Like Us on www.facebook.com/southeasternmrgc
 Subscribe to us www.youtube.com/southeasternmrgc
 Follow Us on www.pinterest.com/seginc/
 Website: www.southeasternmrgc.com
 Location:
 3059 N. Main Street
 Hope Mills NC
 28348 Suite 16
 Office Phone:
 1 910 824 7505

Project: Lewis Residence
MODEL: SEGC-2985
BUILDER: Southeastern General Contractors

DATE PRINTED:
Nov. 2018

DRAWN BY:
ATF

**Basement Wall
Details**

SHEET
3