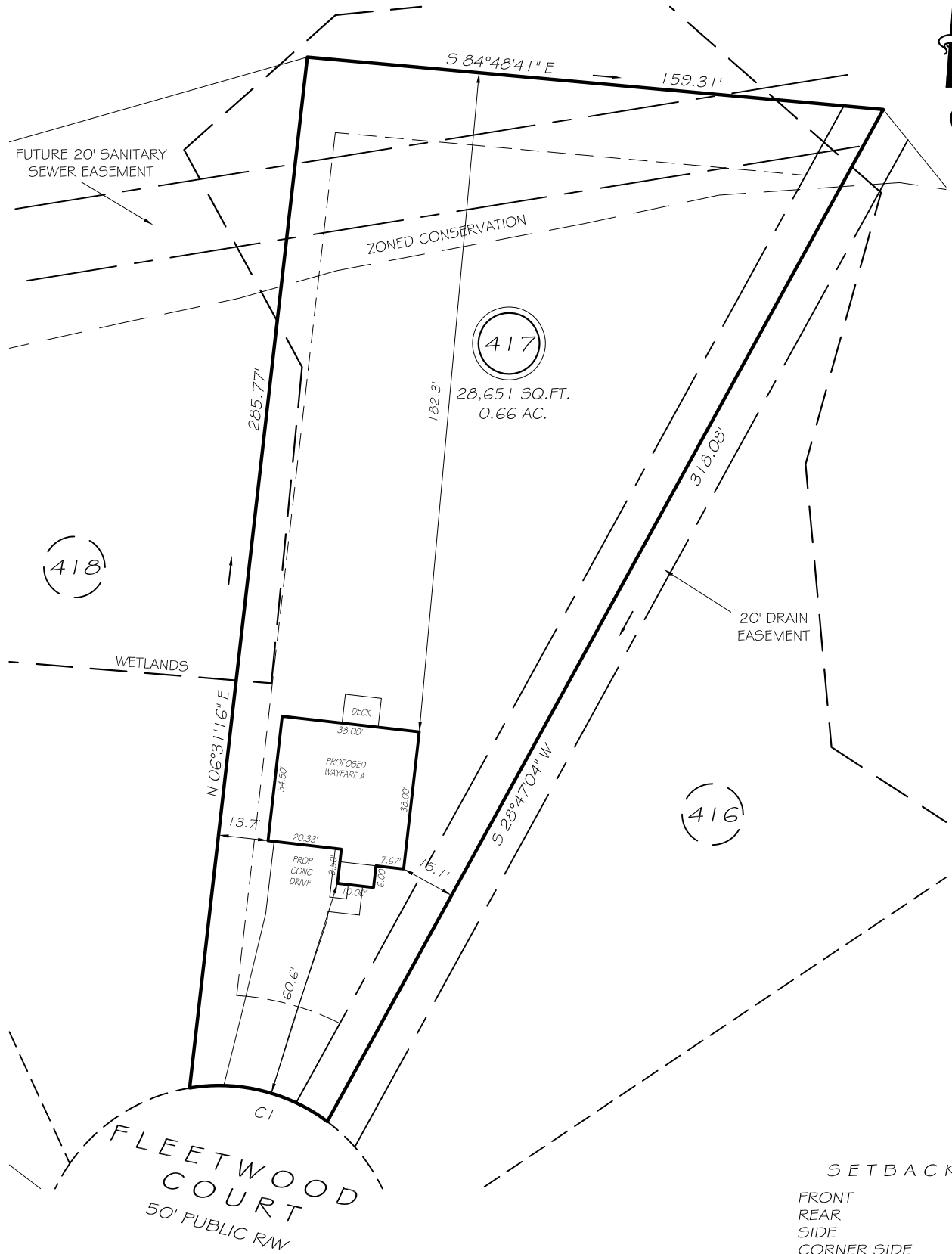


I, MICHAEL P. GRIFFIN, certify that under my direction and supervision this map was drawn from an actual field survey; that the error of closure of the survey as calculated by coordinates is 1: 10,000+; that the area shown hereon was calculated by coordinates.

Witness my hand and seal this day of MONTH 2018.

BK 2013 PG 5  
HARNETT CO. REGISTRY



SETBACKS

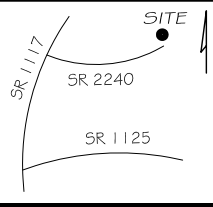
FRONT	25'
REAR	20'
SIDE	10'
CORNER SIDE	20'

CI R=50.00' L=40.13' N76°16'37"W 39.07'  
\*THERE SHALL BE A 5' UTILITY EASEMENT ALONG FRONT OF ALL LOTS

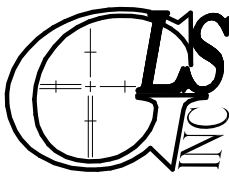
REVISION: MOVE HOUSE BACK 8-31-18

LEGEND

EIP	EXISTING IRON PIPE	FES	FLARED END SECTION
IPS	IRON PIPE SET	WM	WATER METER
R/W	RIGHT OF WAY	CO	CLEAN OUT
N/F	NOW OR FORMERLY	FH	FIRE HYDRANT
EIS	EXISTING IRON STAKE	CB	CATCH BASIN



**PRELIMINARY**  
NOT FOR RECORDATION,  
SALES OR CONVEYANCE



**GRIFFIN LAND SURVEYING, INC.**  
P. O. BOX 148  
FUQUAY-VARINA, NC 27526  
(919) - 567 - 1963

**PLOT PLAN**  
FOR  
**H & H HOMES**  
**WOODSHIRE**  
**LOT 417**  
FLEETWOOD COURT  
NORTH CAROLINA  
HARNETT CO. ANDERSON CREEK TWSHP

DRAWN BY **NMF**

DATE **7/25/18**

CHECKED BY **MPG**

SCALE **1" = 40'**