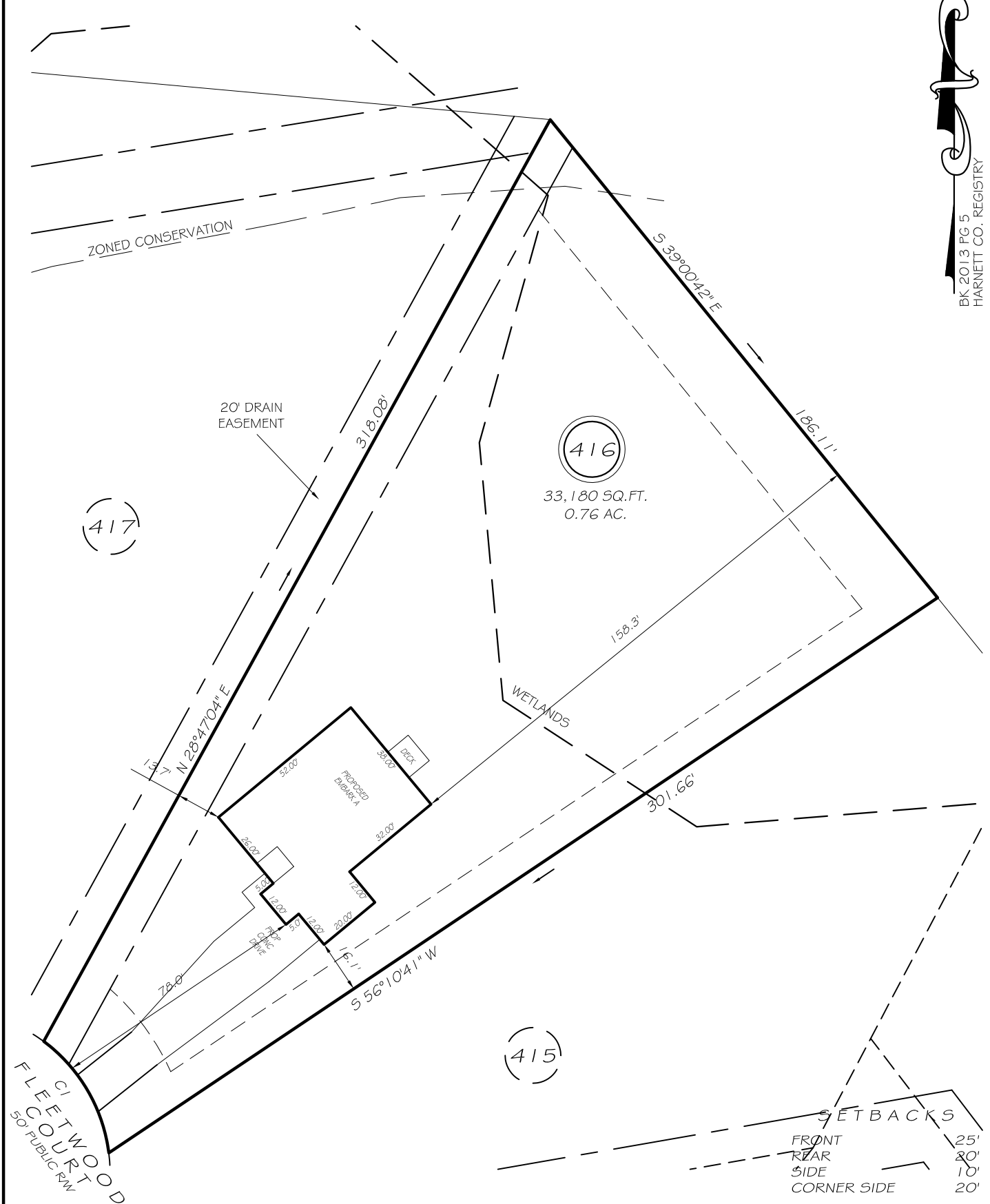


I, MICHAEL P. GRIFFIN, certify that under my direction and supervision this map was drawn from an actual field survey; that the error of closure of the survey as calculated by coordinates is 1: 10,000+; that the area shown hereon was calculated by coordinates.

Witness my hand and seal this day of MONTH 2018.

BK 2013 PG 5
HARNETT CO. REGISTRY



REVISION: MOVE HOUSE BACK 8-31-18

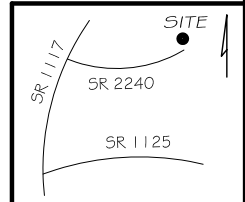
*THERE SHALL BE A 5' UTILITY EASEMENT ALONG FRONT OF ALL LOTS

CI R=50.00' L=40.14' N30°17'09"W 39.07'

PRELIMINARY
NOT FOR RECORDATION,
SALES OR CONVEYANCE

LEGEND

EIP	EXISTING IRON PIPE	FES	FLARED END SECTION
IPS	IRON PIPE SET	WM	WATER METER
R/W	RIGHT OF WAY	CO	CLEAN OUT
N/F	NOW OR FORMERLY	FH	FIRE HYDRANT
EIS	EXISTING IRON STAKE	CB	CATCH BASIN



GLS GRIFFIN LAND SURVEYING, INC.
P. O. BOX 148
FUQUAY-VARINA, NC 27526
(919) - 567 - 1963

DRAWN BY NMF	DATE 7/25/18
CHECKED BY MPG	SCALE 1" = 40'

PLOT PLAN
FOR
H & H HOMES
WOODSHIRE
LOT 416
FLEETWOOD COURT
NORTH CAROLINA
HARNETT CO. ANDERSON CREEK TWSHP